

# CONRA TWO DEPARTURE

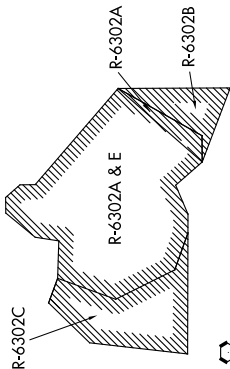
AL-906 (FAA)

ROBERT GRAY AAF (GRK)  
FORT HOOD/KILEEN, TEXAS

SC-3, 09 SEP 2021 to 07 OCT 2021

**TOP ALTITUDE:**  
12000

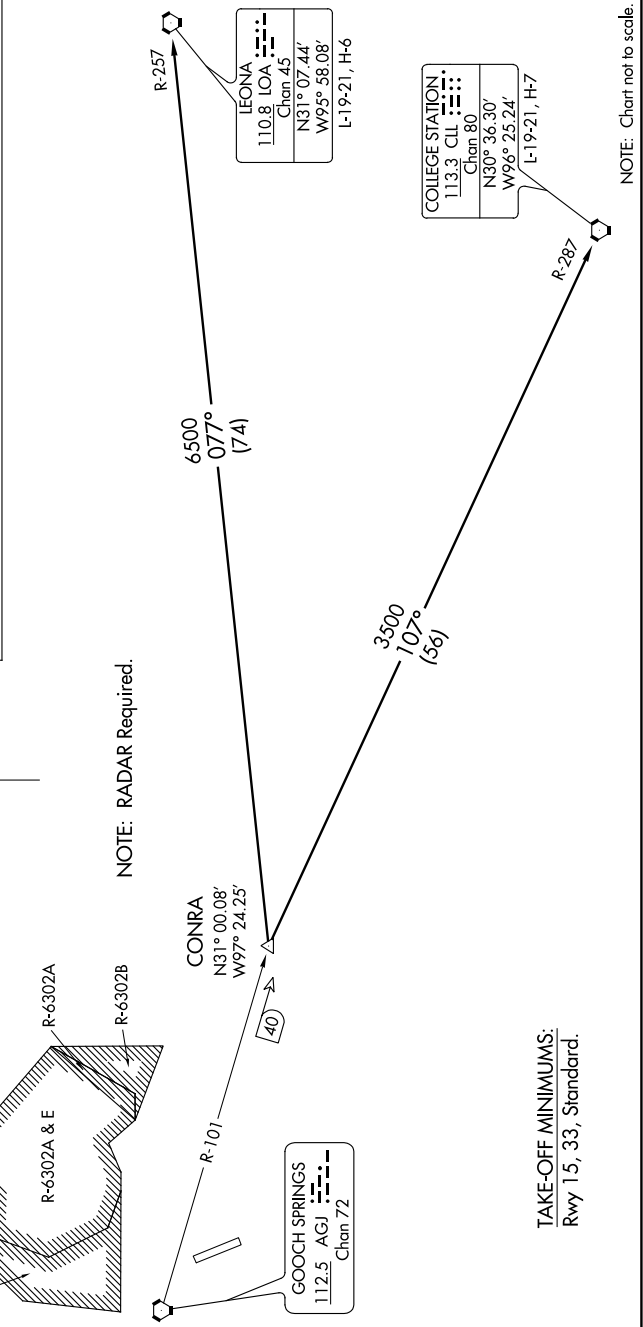
- ATIS 124.9
- CLNC DEL 126.2 251.1
- GND CON 121.8 279.5
- GRAY TOWER 120.75 285.5
- GRAY DEP CON 120.075 323.15



NOTE: RADAR Required.

**DEPARTURE ROUTE DESCRIPTION**  
Climb on assigned heading for RADAR vectors to CONRA INT, maintain 3500. Thence . . . . .  
. . . . . (transition). Expect filed altitude 10 minutes after departure.

**COLLEGE STATION TRANSITION (CONRA2.CLI):** From over CONRA INT via CLL R-287 to CLL VORTAC.  
**LEONA TRANSITION (CONRA2.LOA):** From over CONRA INT via LOA R-257 to LOA VORTAC.



TAKE-OFF MINIMUMS:  
Rwy 15, 33, Standard.

NOTE: Chart not to scale.

SC-3, 09 SEP 2021 to 07 OCT 2021