

LOC I-GRK 111.1	APP CRS 153°	Rwy Idg TDZE Apt Elev	9997 1015 1015
---------------------------	------------------------	-----------------------------	---

ILS or LOC RWY 15

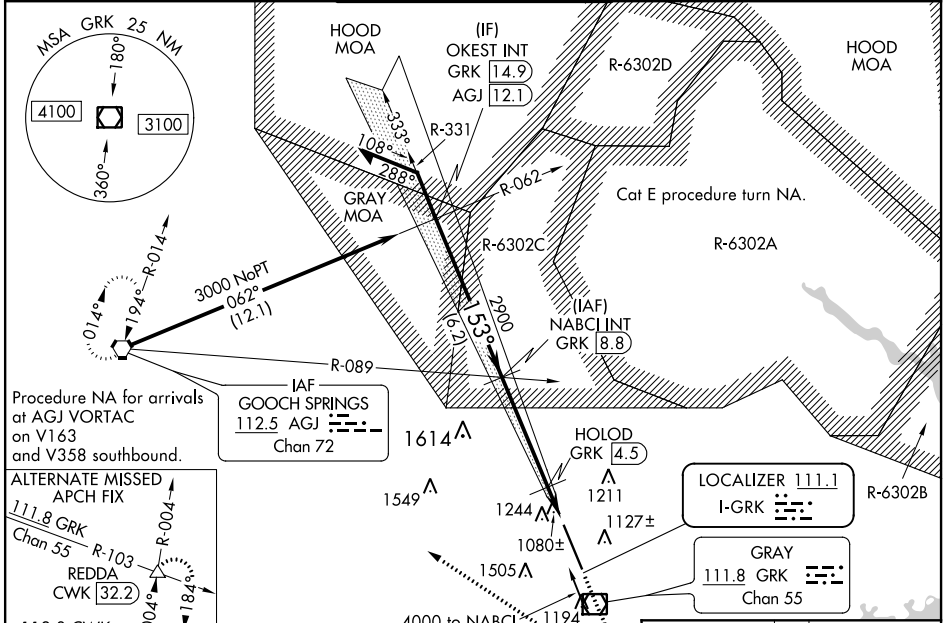
ROBERT GRAY AAF (GRK)

⚠ Circling NA west of Rwy 15-33. For inop ALS, increase S-ILS 15 Cat E visibility to RVR 4000, S-LOC 15 Cats C/D/E visibility to 1 $\frac{1}{2}$ SM, and HOLOD FIX minimums S-LOC 15 Cats C/D/E visibility to RVR 5500. DME from GRK VOR/DME. Simultaneous reception of I-GRK and GRK VOR/DME required.
#RVR 1800 authorized with use of FD or AP or HUD to DA.

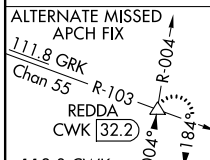


MISSED APPROACH: Climb to 2000 then climbing right turn to 3000 direct AGJ VORTAC and hold.

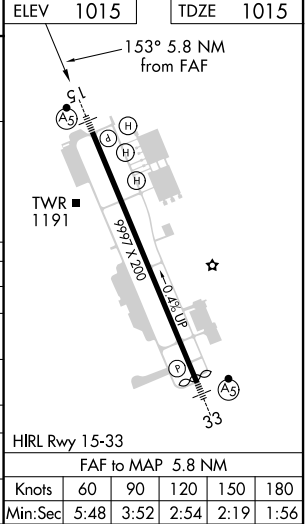
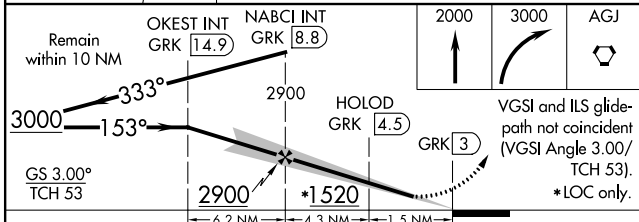
ATIS 124.9	GRAY APP CON 120.075 323.15	GRAY TOWER 120.75 285.5	GND CON 121.8 279.5	CLNC DEL 126.2 251.1
----------------------	---------------------------------------	-----------------------------------	-------------------------------	--------------------------------



Procedure NA for arrivals at AGJ VORTAC on V163 and V358 southbound.



ELEV	1015	TDZE	1015
------	------	------	------



CATEGORY	A	B	C	D	E
S-ILS 15 #	1215/24		200 (200- $\frac{1}{2}$)		
S-LOC 15	1520/24	505 (600- $\frac{1}{2}$)	1520/55 505 (600-1)		
C CIRCLING	1540-1	525 (600-1)	1560-1 $\frac{1}{2}$ 545 (600-1 $\frac{1}{2}$)	1620-2 605 (700-2)	1740-2 $\frac{1}{2}$ 725 (800-2 $\frac{1}{2}$)
HOLOD FIX MINIMUMS (DME REQUIRED)					
S-LOC 15	1380/24	365 (400- $\frac{1}{2}$)	1380/35 365 (400- $\frac{3}{4}$)		
C CIRCLING	1540-1	525 (600-1)	1560-1 $\frac{1}{2}$ 545 (600-1 $\frac{1}{2}$)	1620-2 605 (700-2)	1740-2 $\frac{1}{2}$ 725 (800-2 $\frac{1}{2}$)

HIRL Rwy 15-33					
FAF to MAP 5.8 NM					
Knots	60	90	120	150	180
Min:Sec	5:48	3:52	2:54	2:19	1:56

SC-3, 09 SEP 2021 to 07 OCT 2021

SC-3, 09 SEP 2021 to 07 OCT 2021