

LOC/DME I-BTJ 109.35 Chan 30 (Y)	APP CRS 333°	Rwy Idg 9803 TDZE 995 Apt Elev 1015
---	------------------------	--

ILS or LOC RWY 33

ROBERT GRAY AAF (GRK)

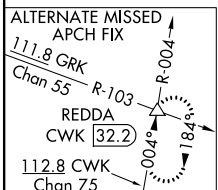
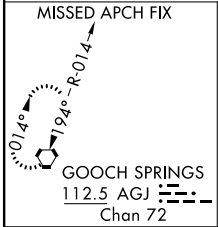
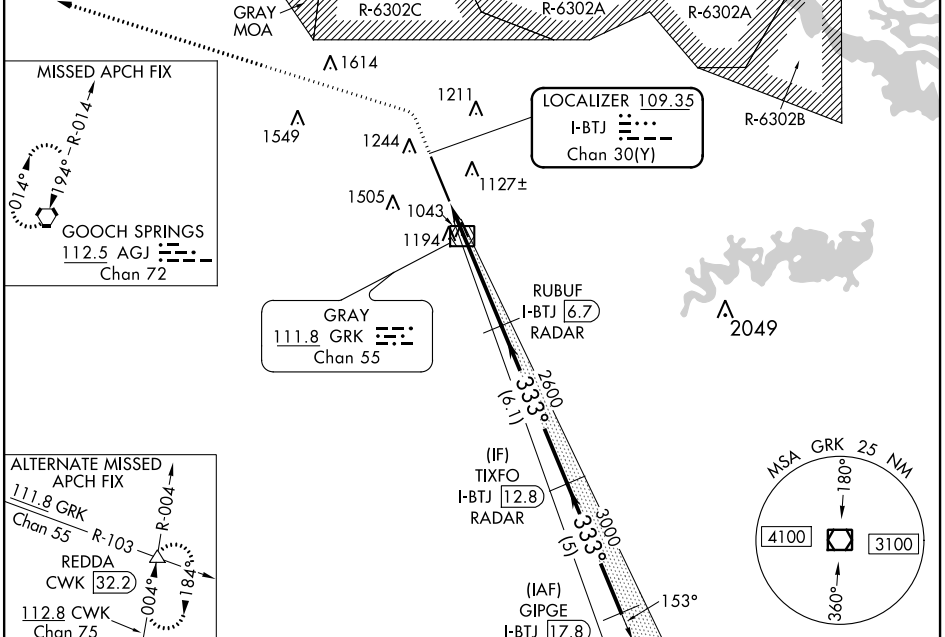
DME or RADAR required.

ASR/ PAR Circling NA west of Rwy 15-33. For inop ALS, increase S-ILS 33 Cat E visibility to 3/4 SM and S-LOC 33 Cat C/D/E visibility to 1 SM.

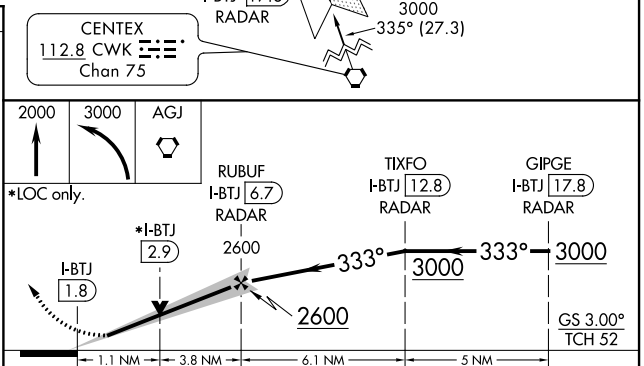
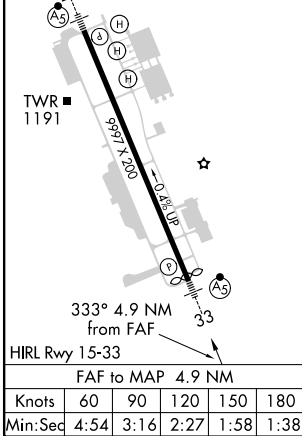


MISSED APPROACH: Climb to 2000 then dimbling left turn to 3000 direct AGJ VORTAC and hold.

ATIS 124.9	GRAY APP CON 120.075 323.15	GRAY TOWER 120.75 (CTAF) 285.5	GND CON 121.8 279.5	CLNC DEL 126.2 251.1
----------------------	---------------------------------------	--	-------------------------------	--------------------------------



ELEV 1015	TDZE 995
-----------	----------



CATEGORY	A	B	C	D	E
S-ILS 33	1195-1/2 200 (200-1/2)				
S-LOC 33	1360-1/2	365 (400-1/2)	1360-3/4	365 (400-3/4)	
CIRCLING	1540-1	525 (600-1)	1560-1 1/2	1620-2	1740-2 1/2
			545 (600-1 1/2)	605 (700-2)	725 (800-2 1/2)

SC-3, 09 SEP 2021 to 07 OCT 2021

SC-3, 09 SEP 2021 to 07 OCT 2021