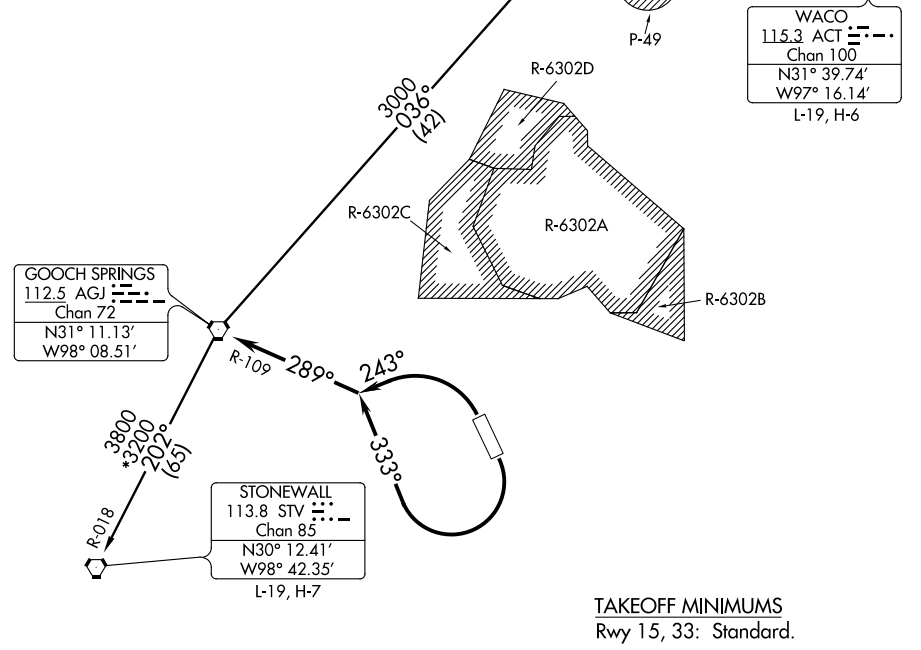


LAMPS SEVEN DEPARTURE

ATIS
124.9
CLNC DEL
126.2 251.1
GND CON
121.8 279.5
GRAY TOWER
120.75 285.5
GRAY DEP CON
120.075 323.15

**TOP ALTITUDE:
ASSIGNED BY ATC**



WACO
115.3 ACT
Chan 100
N31° 39.74'
W97° 16.14'
L-19, H-6

GOOCH SPRINGS
112.5 AGJ
Chan 72
N31° 11.13'
W98° 08.51'

STONEWALL
113.8 STV
Chan 85
N30° 12.41'
W98° 42.35'
L-19, H-7

TAKEOFF MINIMUMS
Rwy 15, 33: Standard.

NOTE: RADAR required.

NOTE: WACO TRANSITION for aircraft inbound to terminal area airports.

NOTE: Chart not to scale.



DEPARTURE ROUTE DESCRIPTION

TAKEOFF RWY 15: Climbing right turn heading 333° (to assigned altitude) to intercept and proceed on AGJ R-109. Thence

TAKEOFF RWY 33: Climbing left turn heading 243° (to assigned altitude) to intercept and proceed on AGJ R-109. Thence

. . . . on (transition) or (assigned route).

STONEWALL TRANSITION (LAMPS7.STV): From over AGJ VORTAC on AGJ R-202 and STV R-018 to STV VORTAC.

WACO TRANSITION (LAMPS7.ACT): From over AGJ VORTAC on AGJ R-036 to SONET INT, then on ACT R-271 to ACT VORTAC.

LAMPS SEVEN DEPARTURE

(LAMPS7.AGJ) 10OCT19

SC-3, 09 SEP 2021 to 07 OCT 2021

SC-3, 09 SEP 2021 to 07 OCT 2021