

WAAS CH 82399 W33A	APP CRS 333°	Rwy Idg TDZE Apt Elev	9803 995 1015
--	------------------------	-----------------------------	--

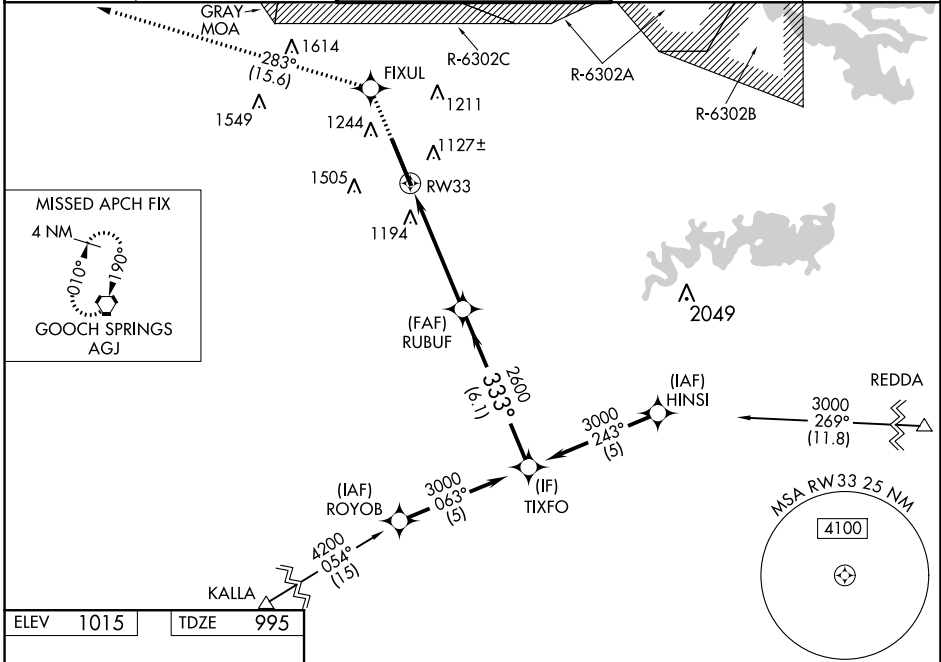
RNAV (GPS) RWY 33

ROBERT GRAY AAF (GRK)

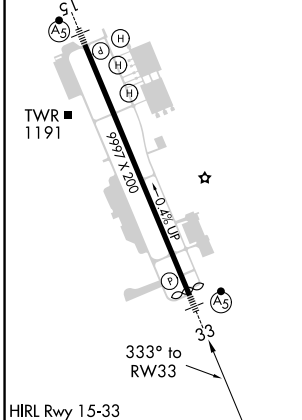
ASR/PAR
For uncompensated Baro-VNAV systems, LNAV/VNAV NA below -17°C (2°F) or above 54°C (130°F). Circling NA west of Rwy 15-33. DME/DME RNP-0.3 NA. For inoperative ALS, increase LPV Cat E visibility to ¾ SM, LNAV/VNAV Cat E visibility to 2 SM, and LNAV Cat E visibility to 1½ SM.

MALSR
 MISSED APPROACH: Climb to 3000 direct FIXUL and on track 283° to AGJ VORTAC and hold.

ATIS 124.9	GRAY APP CON 120.075 323.15	GRAY TOWER 120.75 285.5	GND CON 121.8 279.5	CLNC DEL 126.2 251.1
----------------------	---------------------------------------	-----------------------------------	-------------------------------	--------------------------------



ELEV	1015	TDZE	995
------	------	------	-----



3000	FIXUL	tr 283°	AGJ	VGSI and RNAV glidepath not coincident (VGSI Angle 3.00/TCH 50).	
*LNAV only.					
	RW33	RUBUF	TIXFO	3000	
	1.5 NM	3.4 NM	6.1 NM		
		2600	2600	333°	
				GP 3.00° TCH 50	
CATEGORY	A	B	C	D	E
LPV DA	1195-½		200 (200-½)		
LNAV/VNAV DA	1552-1½		557 (600-1½)		
LNAV MDA	1460-½	465 (500-½)	1460-1	465 (500-1)	
C CIRCLING	1540-1	525 (600-1)	1560-1½ 545 (600-1½)	1620-2 605 (700-2)	1740-2½ 725 (800-2½)

SC-3, 09 SEP 2021 to 07 OCT 2021

SC-3, 09 SEP 2021 to 07 OCT 2021