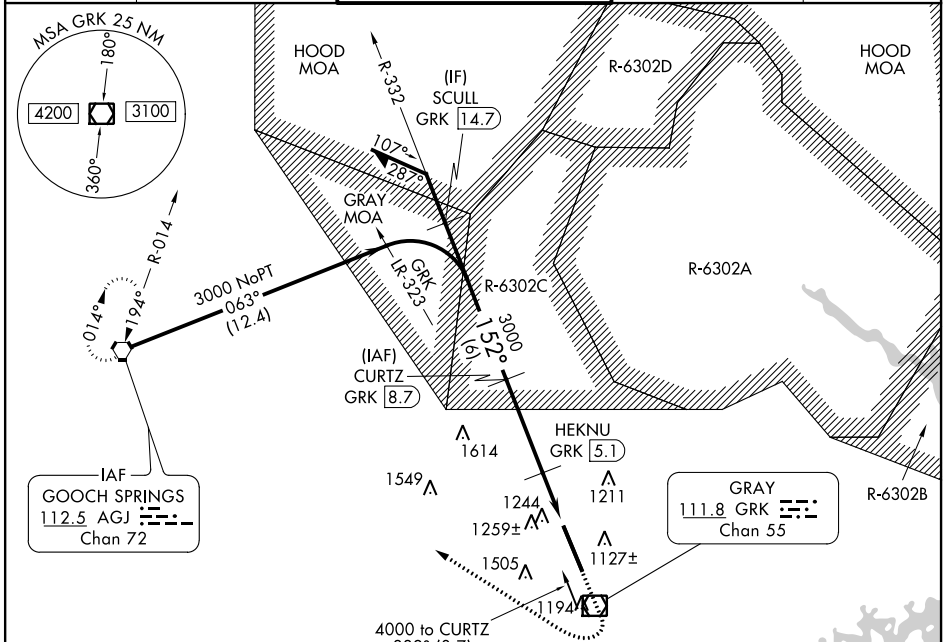


VOR/DME GRK <b>111.8</b> Chan 55	APP CRS <b>152°</b>	Rwy Idg TDZE Apt Elev	<b>9997</b> <b>1015</b> <b>1015</b>
--	------------------------	-----------------------------	---

# VOR/DME RWY 15

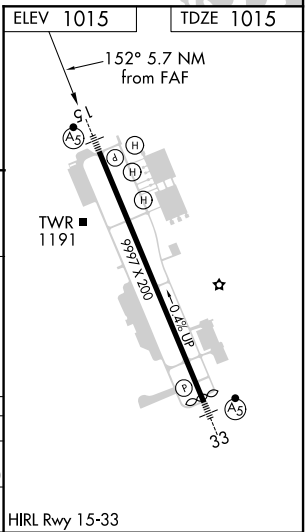
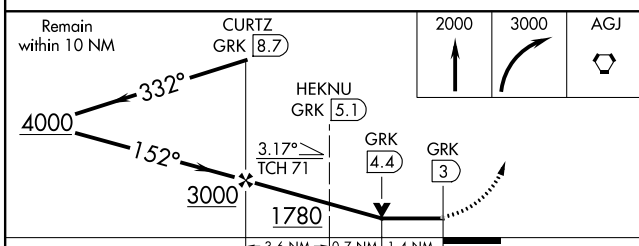
ROBERT GRAY AAF (GRK)

<p><b>NA</b> Circling NA W of Rwy 15-33. For inoperative MALSR, increase S-15 Cat E visibility 1/2 mile.</p> <p><b>ASR/PAR</b></p>	<p><b>MALSR</b></p>	<p><b>MISSED APPROACH:</b> Climb to 2000 then climbing right turn to 3000 direct AGJ VORTAC and hold.</p>		
<p>ATIS <b>124.9</b></p>	<p>GRAY APP CON <b>120.075 323.15</b></p>	<p>GRAY TOWER <b>120.75 285.5</b></p>	<p>GND CON <b>121.8 279.5</b></p>	<p>CLNC DEL <b>126.2 251.1</b></p>



A1616±

Cat E procedure turn not authorized.



CATEGORY	A	B	C	D	E
S-15	1520/24	505 (600-1/2)	1520/50	505 (600-1)	1520/60 505 (600-1/4)
<b>CIRCLING</b>	1540-1	525 (600-1)	1560-1 1/2 545 (600-1 1/2)	1620-2 605 (700-2)	1740-2 1/2 725 (800-2 1/2)

HIRL Rwy 15-33

SC-3, 09 SEP 2021 to 07 OCT 2021

SC-3, 09 SEP 2021 to 07 OCT 2021