

HI-TACAN X RWY 23

TACAN NBC Chan 42	APCH CRS 221°	Rwy ldg 12,202 TDZE 16 Arpt Elev 37
----------------------	------------------	---

AL-916 [USN]

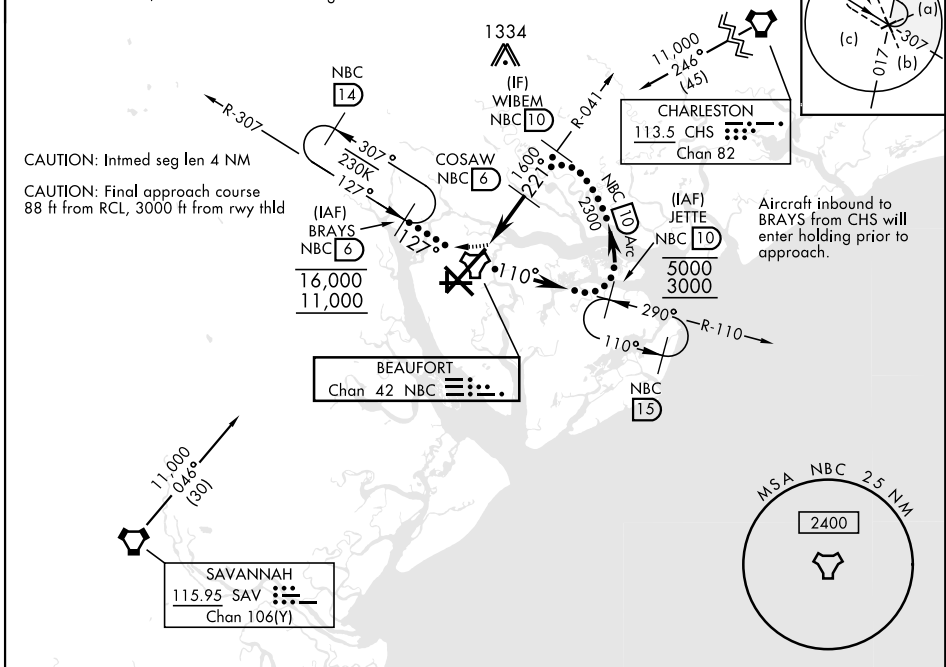
BEAUFORT MCAS (MERRITT FLD) (KNBC)

▼ * When ALS inop, increase vis to 1 mile.
ALS-F-1 (A1)
MISSED APPROACH: Climb to 500 then climbing right turn to 3000, join NBC TACAN R-307 to direct BRAYS and hold.

ATIS ★ 279.525	BEAUFORT APP CON 125.125 292.125 (ABV 3000) 123.7 269.125 (3000 and BLW)	TOWER ★ 119.05 342.875	GND CON 128.15 348.625	CLNC DEL 128.15 254.375	ASR/PAR
-------------------	--	---------------------------	---------------------------	----------------------------	---------

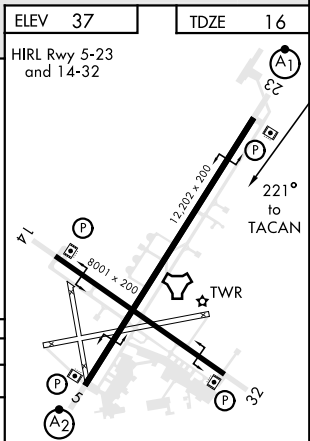
Knots	60	120	180	240	300	360
V/V(fpm)	545	1090	1635	2180	2725	3270

Min climb of 545 ft/NM to 3000 - controlling obstacle unk



EMERG SAFE ALT 100 NM 3100

500	3000	BRAYS NBC R-307	
TACAN	WEMSA 1.7	COSAW 6	
2.2	3.03°	2300	
1600	221°	WIBEM 10	
0.5	4.3 NM		
WEMSA	TCH 43		
CATEGORY	C	D	E
S-23 *	380-¾	364	(400-¾)
CIRCLING	580-1½ 543 (600-1½)	600-2 563 (600-2)	740-2½ 703 (800-2½)



HI-TACAN X RWY 23

SE-2, 09 SEP 2021 to 07 OCT 2021

SE-2, 09 SEP 2021 to 07 OCT 2021