

BEAUFORT, SOUTH CAROLINA

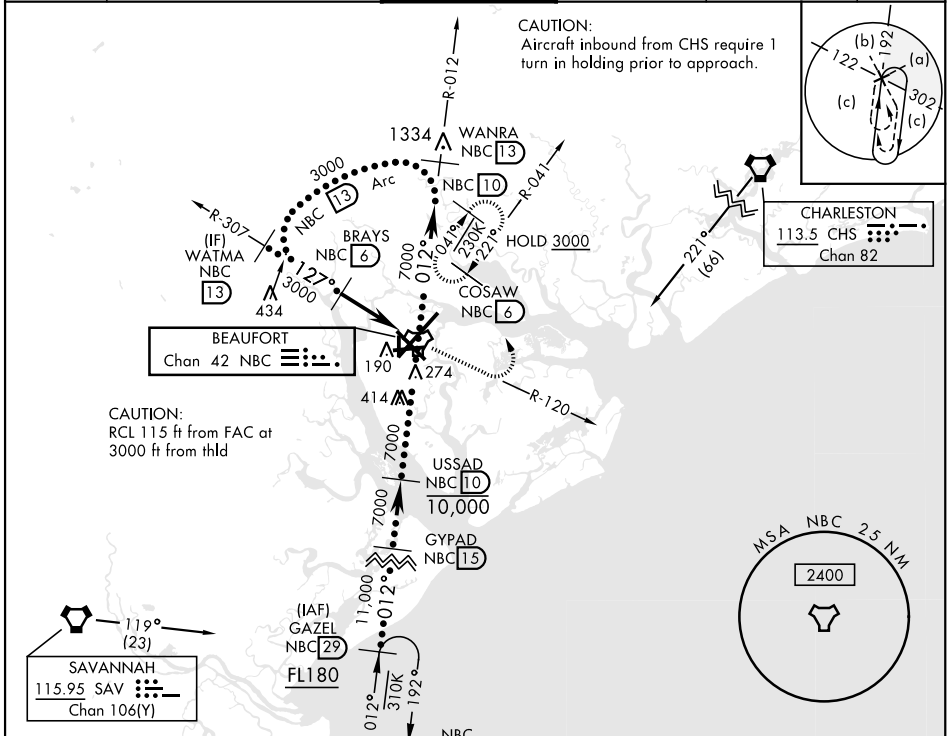
HI-TACAN Y RWY 14

TACAN NBC Chan 42	APCH CRS 127°	Rwy ldg 8001 TDZE 33 Arpt Elev 37	AL-916 [USN]	BEAUFORT MCAS (MERRITT FLD) (KNBC)
----------------------	------------------	--	--------------	------------------------------------

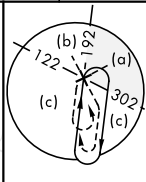
RADAR required.

▼ MISSED APPROACH: Climb to 1600 on NBC TACAN R-120, then climbing left turn to 3000 via hdg 330° to intercept NBC R-041 to 6 DME (COSAW) and hold. Continue climb in hold to 3000.

ATIS ★ 279.525	BEAUFORT APP CON 125.125 292.125 (ABV 3000) 123.7 269.125 (3000 and BLW)	TOWER ★ 119.05 342.875	GND CON 128.15 348.625	CLNC DEL 128.15 254.375	ASR/PAR
-------------------	--	---------------------------	---------------------------	----------------------------	---------



CAUTION:
Aircraft inbound from CHS require 1 turn in holding prior to approach.



CHARLESTON
113.5 CHS
Chan 82

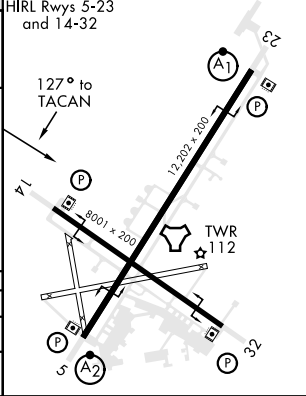
CAUTION:
RCL 115 ft from FAC at 3000 ft from thld

SAVANNAH
115.95 SAV
Chan 106(Y)



ELEV 37	TDZE 33
---------	---------

VDA and VGSI not coincident.			1600 NBC R-120	3000 Hdg 330°	COSAW NBC 6
CATEGORY	C	D	E		
S-14	420-1½	387	(400-1½)		
CIRCLING	580-1½ 543 (600-1½)	600-2 563 (600-2)	740-2½ 703 (800-2½)		



BEAUFORT, SOUTH CAROLINA 32° 29' N-80° 43' W BEAUFORT MCAS (MERRITT FLD) (KNBC)
Amdt 3 17JUN21

HI-TACAN Y RWY 14

SE-2, 09 SEP 2021 to 07 OCT 2021

SE-2, 09 SEP 2021 to 07 OCT 2021