

HI-TACAN Y RWY 23

TACAN NBC Chan 42	APCH CRS 221°	Rwy ldg TDZE Arprt Elev 12,202 16 37
-----------------------------	-------------------------	--------------------------------------------------------------------------

AL-916 [USN]

BEAUFORT MCAS (MERRITT FLD) (KNBC)

ALSIF-1 (A1) MISSED APPROACH: Climb to 500, then climbing right turn to 3000, intercept NBC TACAN R-307 direct BRAYS and hold.

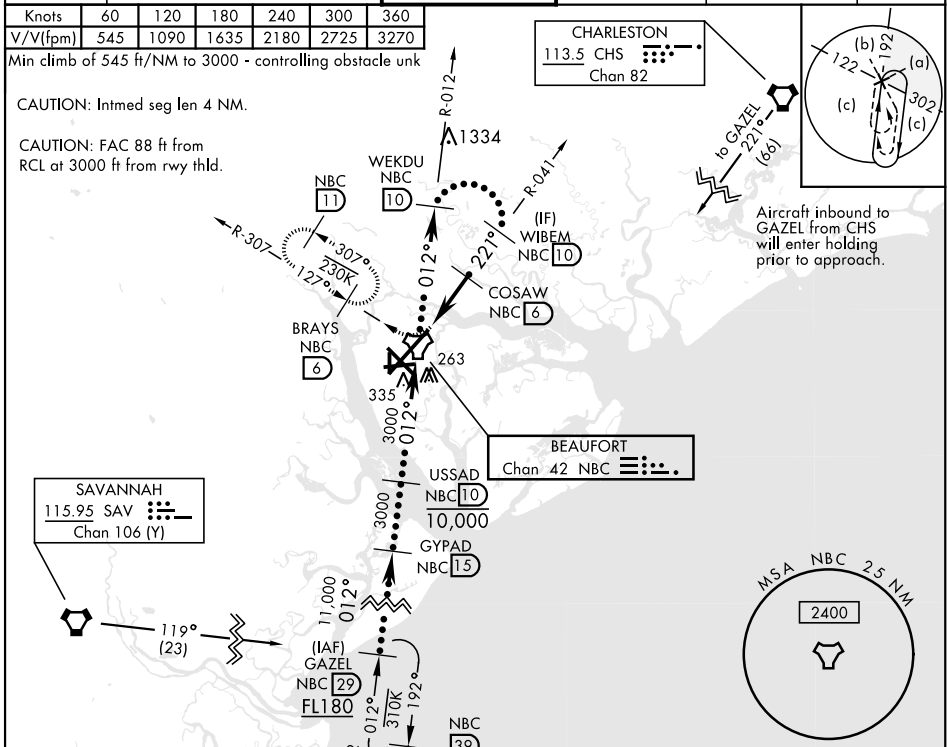
ATIS ★ 279.525	BEAUFORT APP CON (ABY 3000) 125.125 292.125 (3000 and BLW) 123.7 269.125	TOWER ★ 119.05 342.875	GND CON 128.15 348.625	CLNC DEL 128.15 254.375	ASR/PAR
--------------------------	------------------------------------------------------------------------------------------------------------	-----------------------------------------	-----------------------------------------	------------------------------------------	---------

Knots	60	120	180	240	300	360
V/V(fpm)	545	1090	1635	2180	2725	3270

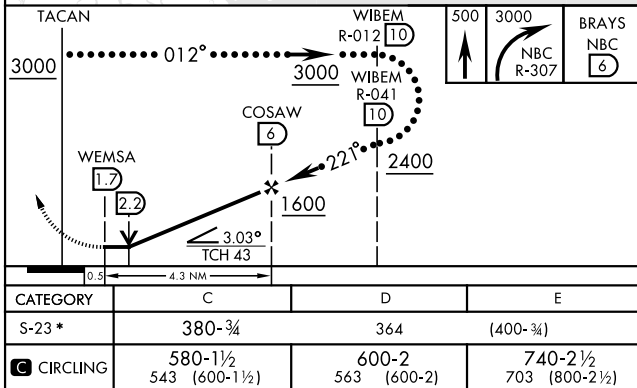
Min climb of 545 ft/NM to 3000 - controlling obstacle unk

CAUTION: Intmed seg len 4 NM.

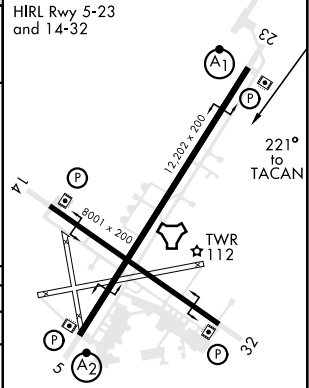
CAUTION: FAC 88 ft from RCL at 3000 ft from rwy thld.



EMERG SAFE ALT 100 NM 3100



ELEV 37	TDZE 16
---------	---------



HI-TACAN Y RWY 23

SE-2, 09 SEP 2021 to 07 OCT 2021

SE-2, 09 SEP 2021 to 07 OCT 2021