

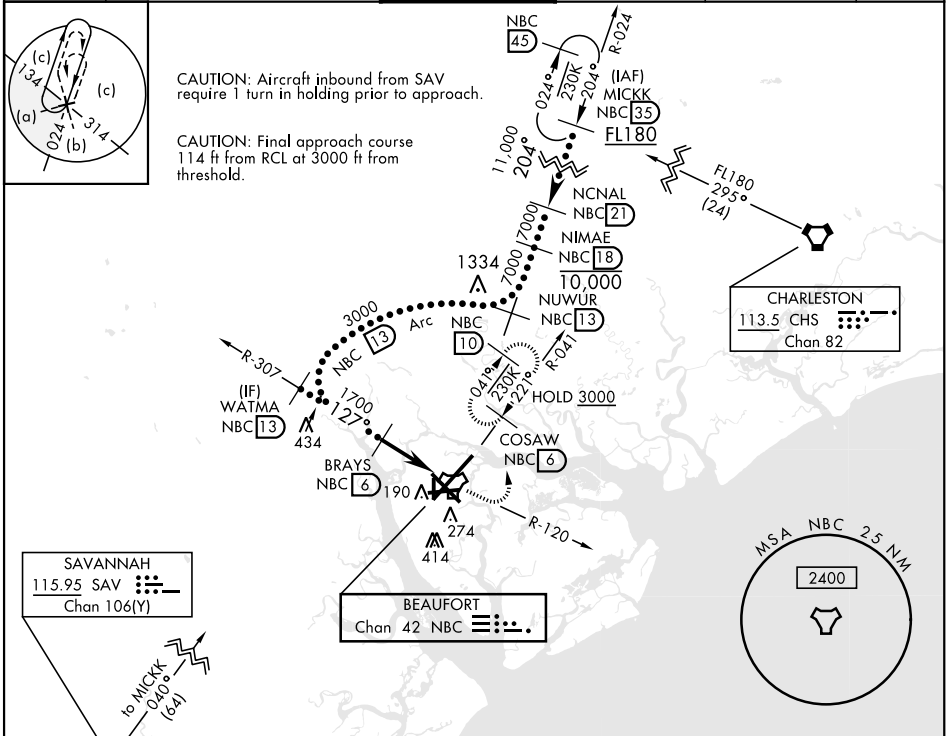
BEAUFORT, SOUTH CAROLINA

HI-TACAN Z RWY 14

TACAN NBC Chan 42	APCH CRS 127°	Rwy Idg 8001 TDZE 33 Arprt Elev 37	AL-916 [USN]	BEAUFORT MCAS (MERRITT FLD) (KNBC)
-----------------------------	-------------------------	---	--------------	------------------------------------

RADAR required. MISSED APPROACH: Climb to 1600 on NBC TACAN R-120, then climbing left turn to 3000 via hdg 330° to intercept NBC R-041 to 6 DME (COSAW) and hold. Continue climb in hold to 3000.

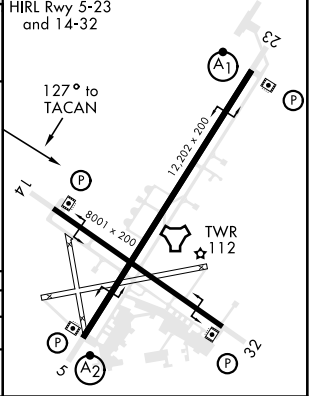
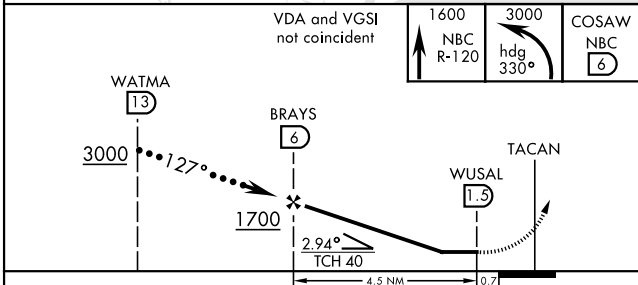
ATIS ★ 279.525	BEAUFORT APP CON (ABV 3000) 125.125 292.125 (3000 and BLW) 123.7 269.125	BEAUFORT TOWER ★ 119.05 342.875	GND CON 128.15 348.625	CLNC DEL 128.15 254.375	ASR/PAR
--------------------------	--	---	----------------------------------	-----------------------------------	---------



SE-2, 09 SEP 2021 to 07 OCT 2021

SE-2, 09 SEP 2021 to 07 OCT 2021

ELEV 37	TDZE 33
----------------	----------------



CATEGORY	C	D	E
S-14	420-1½	387	(400-1½)
CIRCLING	580-1½ 543 (600-1½)	600-2 563 (600-2)	740-2½ 703 (800-2½)

BEAUFORT, SOUTH CAROLINA 32° 29' N-80° 43' W BEAUFORT MCAS (MERRITT FLD) (KNBC)

Amtd 3 17JUN21

HI-TACAN Z RWY 14