

HI-TACAN Z RWY 23

TACAN NBC Chan 42	APCH CRS 221°	Rwy ldg 12,202 TDZE 16 Arpt Elev 37
-----------------------------	-------------------------	--

AL-916 [USN]

BEAUFORT MCAS (MERRITT FLD) (KNBC)

*When ALS inop, increase vis to 1 mile.

ALSF-1  MISSED APPROACH: Climb to 500, then climbing right turn to 3000, intercept NBC TACAN R-307 direct BRAYS and hold.

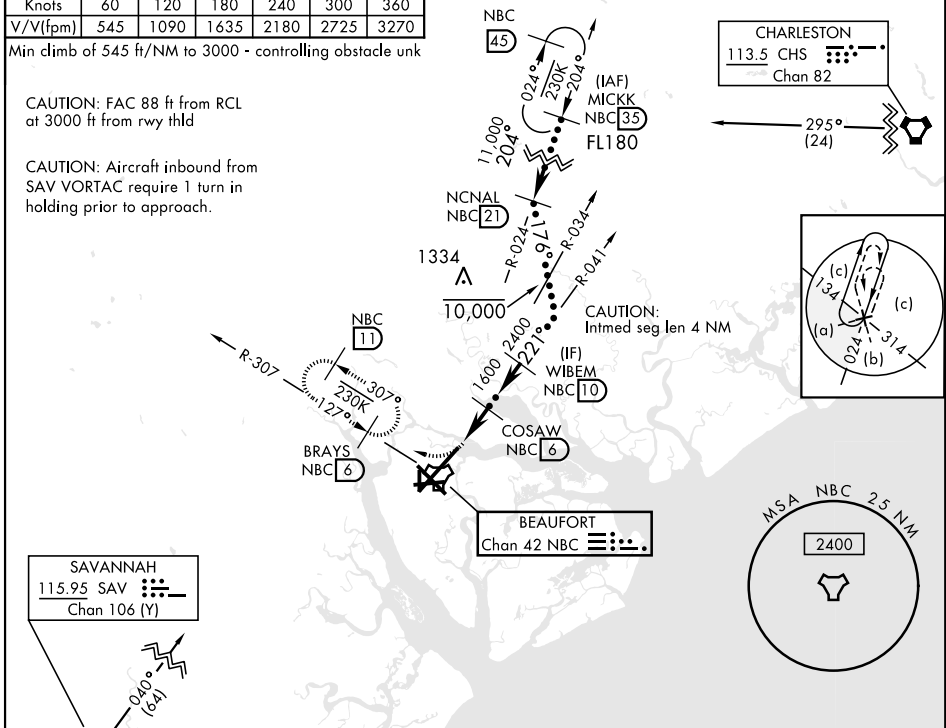
ATIS ★ 279.525	BEAUFORT APP CON (ABV 3000) 125.125 292.125 (3000 and BLW) 123.7 269.125	TOWER ★ 119.05 342.875	GND CON 128.15 348.625	CLNC DEL 128.15 254.375	ASR/PAR
--------------------------	--	----------------------------------	----------------------------------	-----------------------------------	---------

Knots	60	120	180	240	300	360
V/V(fpm)	545	1090	1635	2180	2725	3270

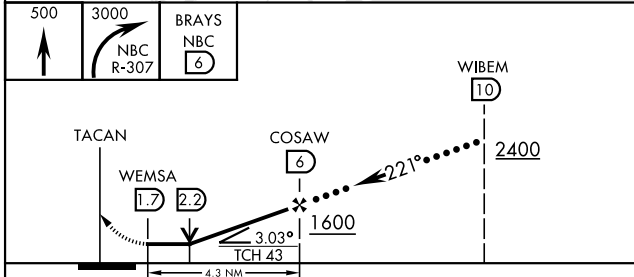
Min climb of 545 ft/NM to 3000 - controlling obstacle unk

CAUTION: FAC 88 ft from RCL at 3000 ft from rwy thld

CAUTION: Aircraft inbound from SAV VORTAC require 1 turn in holding prior to approach.

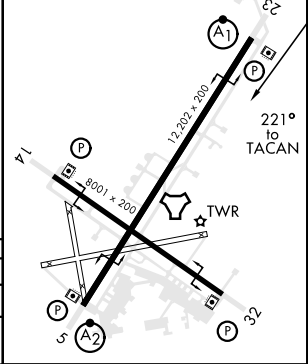


EMERG SAFE ALT 100 NM 3100



ELEV 37	TDZE 16
---------	---------

HIRL Rwys 5-23 and 14-32



CATEGORY	C	D	E
S-23 *	380-3/4	364	(400-3/4)
CIRCLING	580-1 1/2 543 (600-1 1/2)	600-2 563 (600-2)	740-2 1/2 703 (800-2 1/2)

HI-TACAN Z RWY 23

SE-2, 09 SEP 2021 to 07 OCT 2021

SE-2, 09 SEP 2021 to 07 OCT 2021