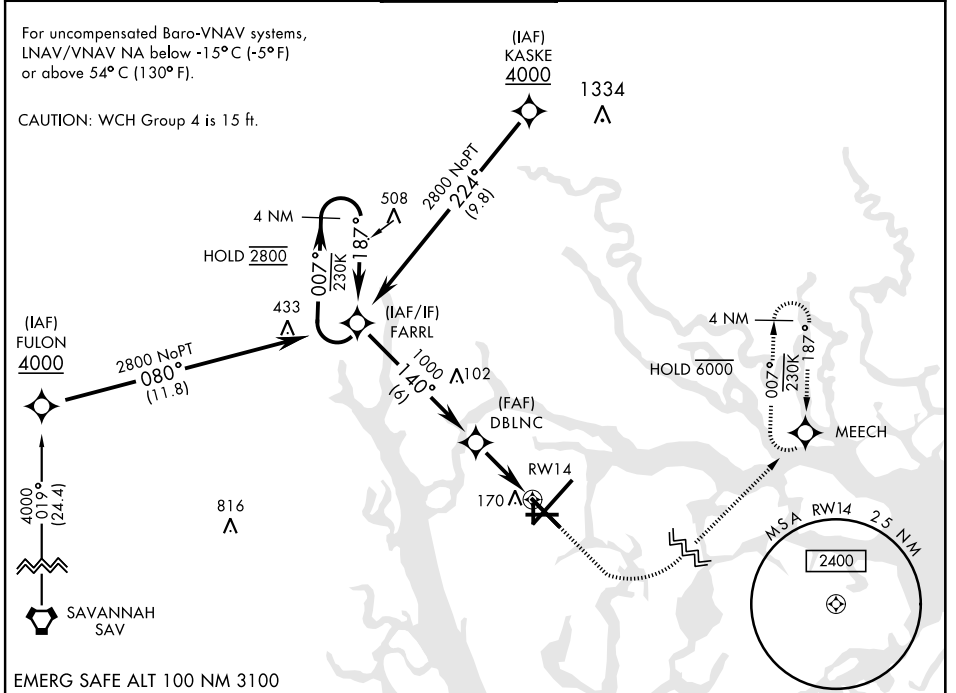


# RNAV (GPS) RWY 14

WAAS Chan <b>91240</b> <b>W14A</b>	APCH CRS <b>140°</b>	Rwy ldg <b>8001</b> TDZE <b>33</b> Arpt Elev <b>37</b>	AL-916 [USN]	BEAUFORT MCAS (MERRITT FLD) (KNBC)
--	-------------------------	--	--------------	------------------------------------

RNP APCH - DME/DME RNP-0.3 NA	MISSED APPROACH: Climb to 700, then climbing left turn to 3000 direct MEECH and hold.
RADAR required for arrivals via KASKE or FARRL IAFs.	

ATIS ★ <b>279.525</b>	BEAUFORT APP CON (ABV 3000) <b>125.125 292.125</b> (3000 and BLW) <b>123.7 269.125</b>	BEAUFORT TOWER ★ <b>119.05 342.875</b>	GND CON <b>128.15 348.625</b>	CLNC DEL <b>128.15 254.375</b>	ASR/ PAR
--------------------------	--	---	----------------------------------	-----------------------------------	-------------



SE-2, 09 SEP 2021 to 07 OCT 2021

SE-2, 09 SEP 2021 to 07 OCT 2021

EMERG SAFE ALT 100 NM 3100

FARRL 2800 007° 187°	DBLNC 1000 140°	RWY14 1.1 NM to RWY14 2.9 NM	700 3000 MEECH	ELEV 37 TDZE 33
GP 3.02° TCH 40				

CATEGORY	A	B	C	D
LPV DA	233-3/4	200	(200-3/4)	
LNAV/VNAV DA	420-1 1/8	387	(400-1 1/8)	
LNAV MDA	420-1	387 (400-1)	420-1 1/8	387 (400-1 1/8)
<b>C</b> CIRCLING	500-1	463 (500-1)	580-1 1/2	600-2
			543 (600-1 1/2)	563 (600-2)

HIRL Rwy 5-23 and 14-32

# RNAV (GPS) RWY 14