

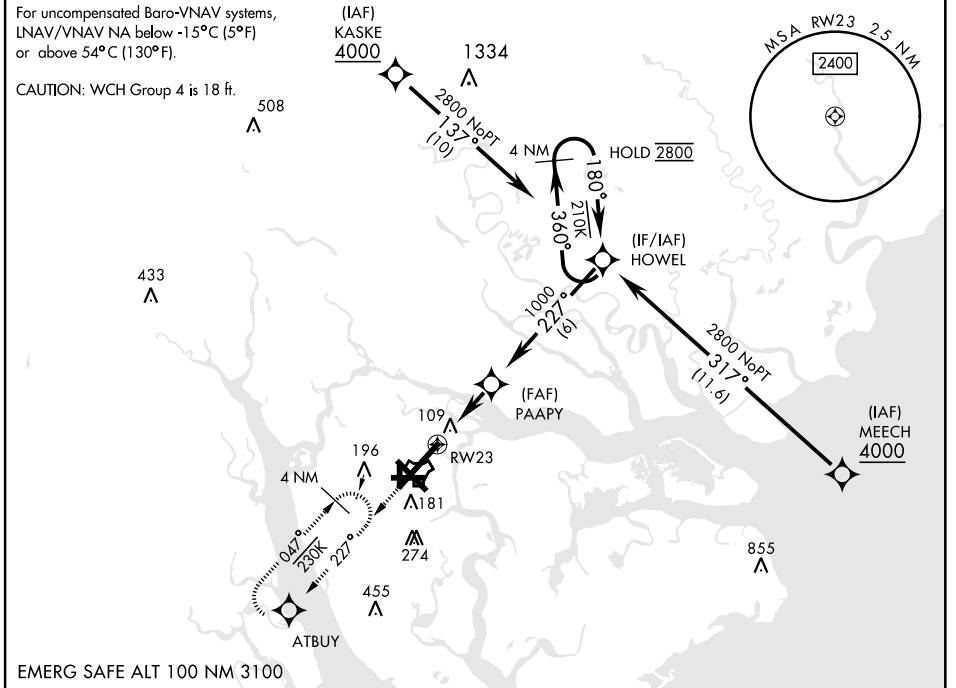
RNAV (GPS) RWY 23

WAAS Chan 93379 W23A	APCH CRS 227°	Rwy ldg 12,202 TDZE Arpt Elev 37	AL-916 [USN]	BEAUFORT MCAS (MERRITT FLD) (KNBC)
--	-------------------------	--	--------------	------------------------------------

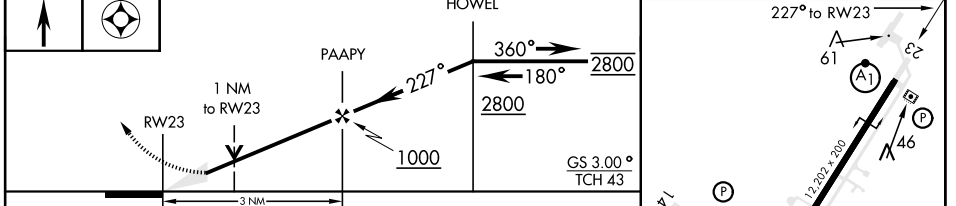
RNP APCH. DME/DME RNP-0.3 NA	ALSIF-1 	MISSED APPROACH: Climb to 3000 direct ATBUY and hold. Continue climb in hold to 3000.
------------------------------	-------------	---

∇**When ALS inop, increase vis to 3/4 mile.
∇**When ALS inop, increase vis to 1 mile.

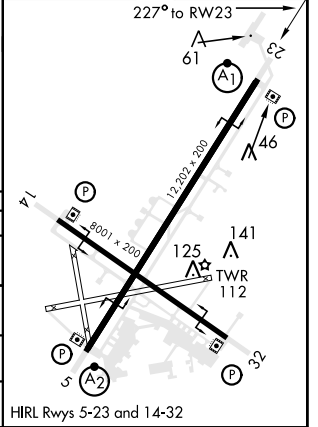
ATIS ★ 279.525	BEAUFORT APP CON 125.125 292.125 (ABV 3000) 123.7 269.125 (3000 and BLW)	TOWER ★ 119.05 342.875	GND CON 128.15 348.625	CLNC DEL 128.15 254.375	ASR/ PAR
--------------------------	--	----------------------------------	----------------------------------	-----------------------------------	-------------



EMERG SAFE ALT 100 NM 3100



CATEGORY	A	B	C	D
LPV DA *	216-1/2	200	(200-1/2)	
LNAV/ VNAV DA *	266-1/2	250	(300-1/2)	268-1/2 252 (300-3/4)
LNAV MDA **	380-1/2	364 (400-1/2)	380-3/4	364 (400-3/4)
C CIRCLING	500-1	463 (500-1)	580-1 1/2 543 (600-1 1/2)	600-2 563 (600-2)



RNAV (GPS) RWY 23

SE-2, 09 SEP 2021 to 07 OCT 2021

SE-2, 09 SEP 2021 to 07 OCT 2021