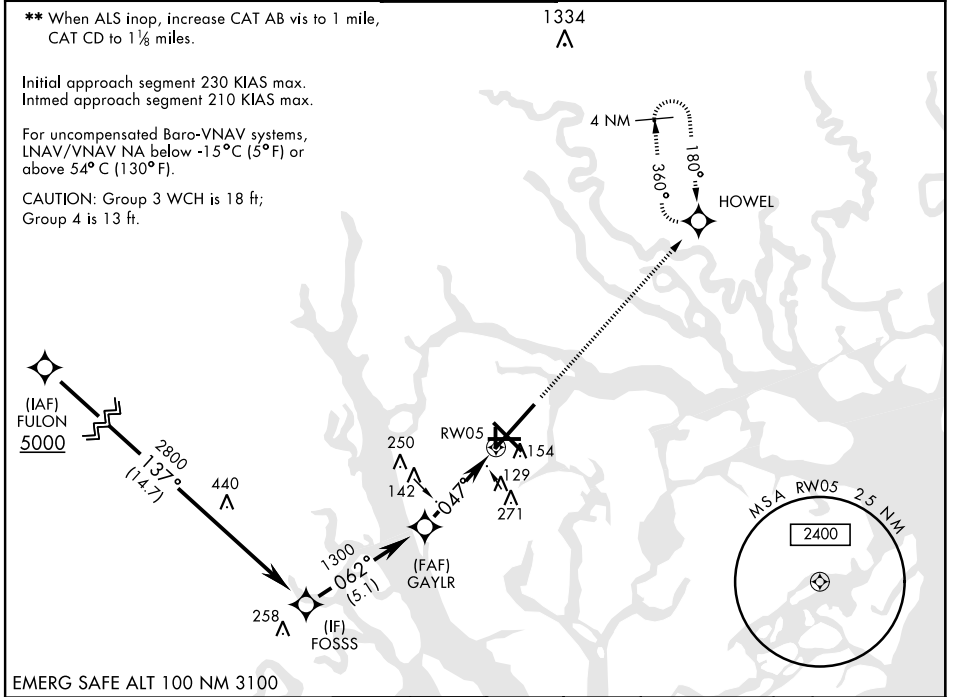


# RNAV (GPS) RWY 5

WAAS Chan <b>90095</b> <b>W05A</b>	APCH CRS <b>047°</b>	Rwy ldg <b>12,202</b> TDZE <b>37</b> Arpt Elev <b>37</b>	AL-916 [USN]	BEAUFORT MCAS (MERRITT FLD) (KNBC)
--	-------------------------	--	--------------	------------------------------------

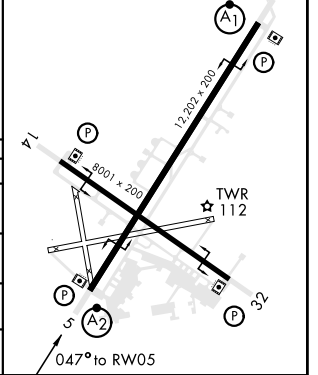
RNP APCH - DME/DME RNP-0.3 NA	SALSF 	MISSED APPROACH: Climb to 3000 direct HOWEL and hold, continue climb-in-hold to 3000.
RADAR required.		

ATIS ★ <b>279.525</b>	BEAUFORT APP CON <b>125.125 292.125</b> (ABV 3000) <b>123.7 269.125</b> (3000 and BLW)	TOWER★ <b>119.05 342.875</b>	GND CON <b>128.15 348.625</b>	CLNC DEL <b>128.15 254.375</b>	ASR/ PAR
--------------------------	--	---------------------------------	----------------------------------	-----------------------------------	-------------



EMERG SAFE ALT 100 NM 3100	3000	HOWEL	ELEV 37	TDZE 37
----------------------------	------	-------	---------	---------

	CATEGORY	A	B	C	D
	LPV DA		237-3/4	200	(200-3/4)
	LNAV/ VNAV DA		409-3/4	372	(400-3/4)
	LNAV MDA		440-3/4 403 (500-3/4)	440-1 403 (500-1)	
	CIRCLING		500-1 463 (500-1)	580-1 1/2 543 (600-1 1/2)	600-2 563 (600-2)



# RNAV (GPS) RWY 5

SE-2, 09 SEP 2021 to 07 OCT 2021

SE-2, 09 SEP 2021 to 07 OCT 2021