

WAAS CH <b>82605</b> W <b>27A</b>	APP CRS <b>276°</b>	Rwy Idg <b>8499</b> TDZE <b>142</b> Apt Elev <b>142</b>
---	------------------------	---

# RNAV (GPS) RWY 27

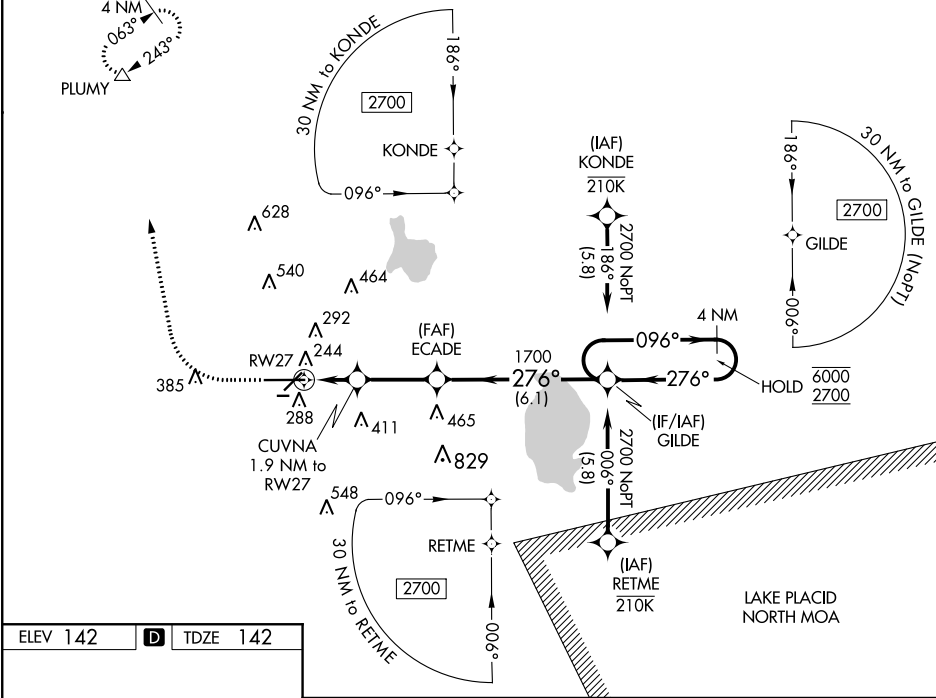
LAKELAND LINDER INTL (LAI)

RNP APCH-GPS.

▼ Rwy 27 helicopter visibility reduction below  $\frac{3}{4}$  SM NA. For uncompensated Baro-VNAV systems, LNAV/VNAV NA below -15°C or above 54°C. When local altimeter setting not received, use Plant City altimeter setting: increase LPV DA to 360 feet; increase LNAV/VNAV DA to 473 feet and visibility all Cats  $\frac{1}{2}$  SM; increase all MDAs 20 feet and LNAV Cats C/D visibility  $\frac{1}{2}$  SM. Baro-VNAV and VDP NA when using Plant City altimeter setting. Circling NA to Rwy's 8 and 26.

MISSED APPROACH: Climb to 1000 then climbing right turn to 2000 direct PLUMY and hold.

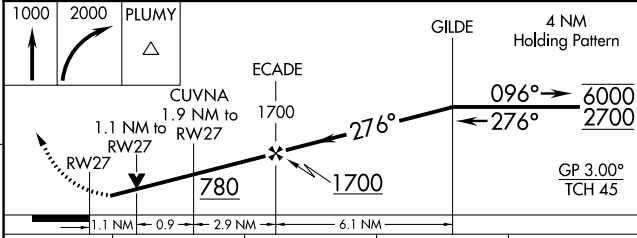
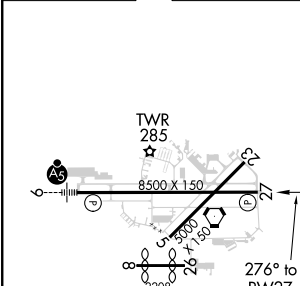
ATIS <b>118.025</b>	TAMPA APP CON <b>120.65 290.3</b>	LAKELAND TOWER ★ <b>124.5 (CTAF) 236.775</b>	GND CON <b>121.4</b>	UNICOM <b>122.95</b>
------------------------	--------------------------------------	---	-------------------------	-------------------------



SE-3, 09 SEP 2021 to 07 OCT 2021

SE-3, 09 SEP 2021 to 07 OCT 2021

ELEV 142	<b>D</b>	TDZE 142
----------	----------	----------



CATEGORY	A	B	C	D
LPV DA		342- $\frac{3}{4}$	200 (200- $\frac{3}{4}$ )	
LNAV/VNAV DA		455-1	313 (400-1)	
LNAV MDA	560-1	418 (500-1)	560-1 $\frac{1}{8}$	418 (500-1 $\frac{1}{8}$ )
CIRCLING	600-1 458 (500-1)	660-1 518 (600-1)	720-1 $\frac{1}{2}$ 578 (600-1 $\frac{1}{2}$ )	840-2 $\frac{1}{4}$ 698 (700-2 $\frac{1}{4}$ )

LAKELAND, FLORIDA  
Amdt 2E 15JUL21

27°59'N-82°01'W

# LAKELAND LINDER INTL (LAI) RNAV (GPS) RWY 27