

WAAS CH 78305 W09A	APP CRS 096°	Rwy Idg 8414 TDZE 132 Apt Elev 142
--	------------------------	---

RNAV (GPS) RWY 9

LAKELAND LINDER INTL (LAL)

RNP APCH-GPS.

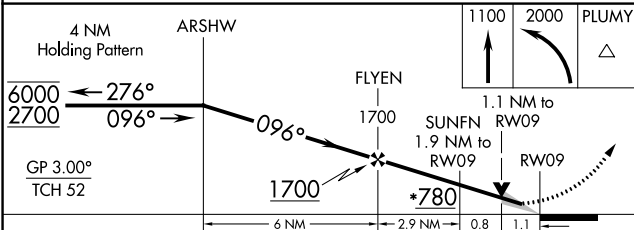
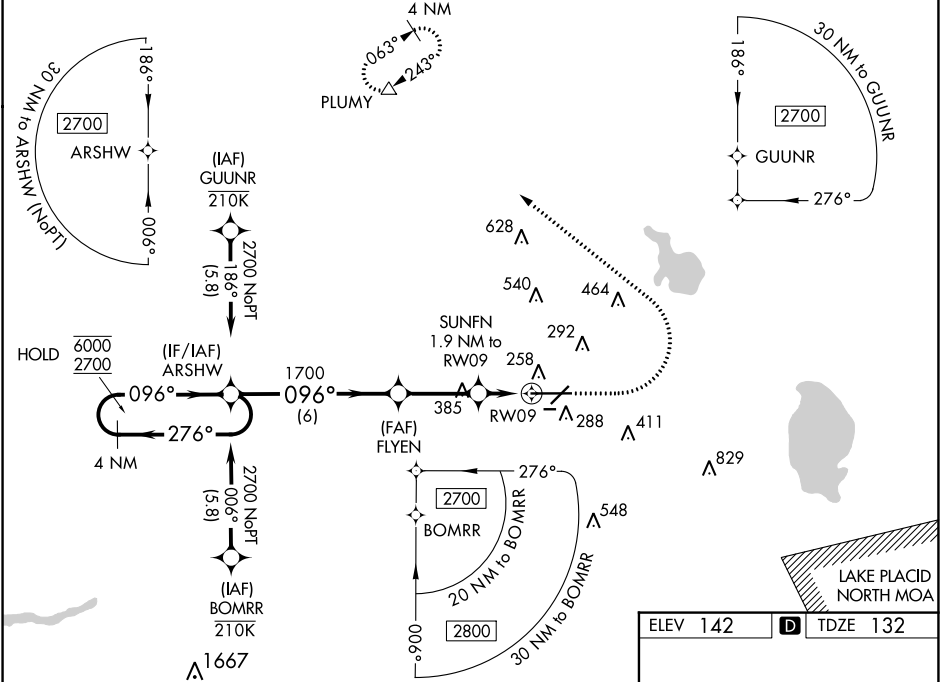
▼ Circling NA to Rwy 8 and 26. For uncompensated Baro-VNAV systems, LNAV/VNAV NA below -1.5°C or above 54°C. Baro-VNAV and VDP NA when using Plant City altimeter setting. When local altimeter setting not received, use Plant City altimeter setting: increase LPV DA to 350 feet; increase LNAV/VNAV DA to 457 feet and visibility all Cats $\frac{1}{8}$ SM; increase all MDAs 20 feet and LNAV Cats C/D visibility $\frac{1}{8}$ SM. For inop ALS, increase LNAV Cats C/D visibility to $\frac{1}{8}$ SM. For inop ALS when using Plant City altimeter setting, increase LNAV/VNAV all Cats visibility to 1 SM.

MALSR

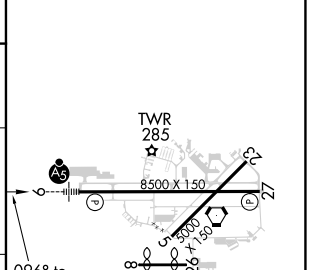


MISSED APPROACH:
Climb to 1100 then climbing left turn to 2000 direct PLUMY and hold.

ATIS 118.025	TAMPA APP CON 120.65 290.3	LAKELAND TOWER ★ 124.5 (CTAF) 236.775	GND CON 121.4	UNICOM 122.95
------------------------	--------------------------------------	---	-------------------------	-------------------------



ELEV 142	TDZE 132
----------	----------



CATEGORY	A	B	C	D
LPV DA		332-1/2	200 (200-1/2)	
LNAV/VNAV DA		439-1/2	307 (300-1/2)	
LNAV MDA	520-1/2 388 (400-1/2)		520-5/8 388 (400-5/8)	
CIRCLING	600-1 458 (500-1)	660-1 518 (600-1)	720-1 578 (600-1 1/2)	840-2 698 (700-2 1/4)

HIRL Rwy 5-23 and 9-27

SE-3, 09 SEP 2021 to 07 OCT 2021

SE-3, 09 SEP 2021 to 07 OCT 2021