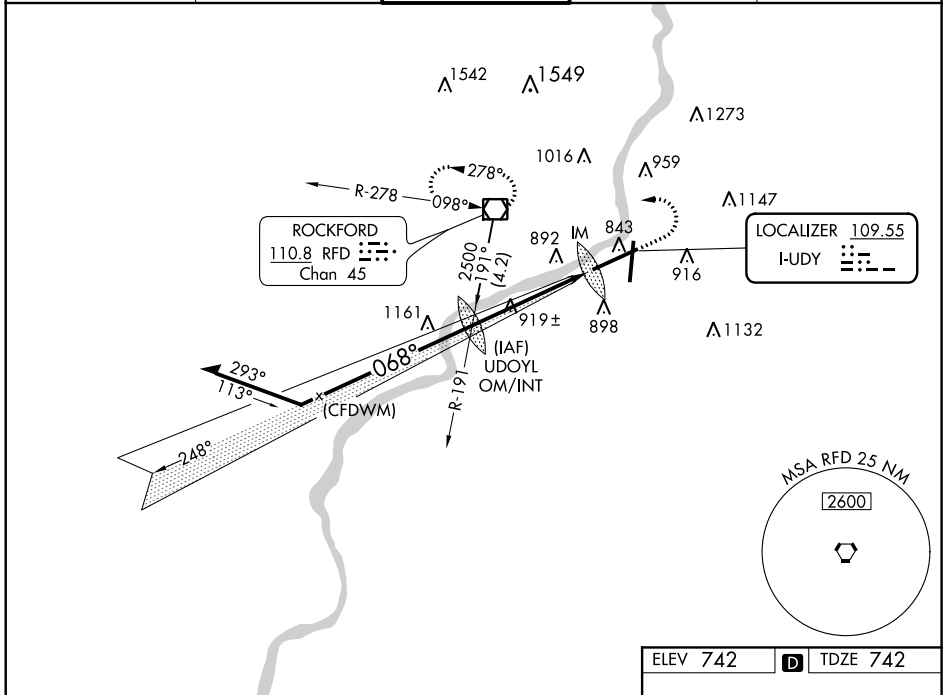


LOC I-JUDY 109.55	APP CRS 068°	Rwy Idg 10002 TDZE 742 Apt Elev 742
-----------------------------	------------------------	--

ILS RWY 7 (CAT II & III)
CHICAGO/ROCKFORD INTL (RFD)

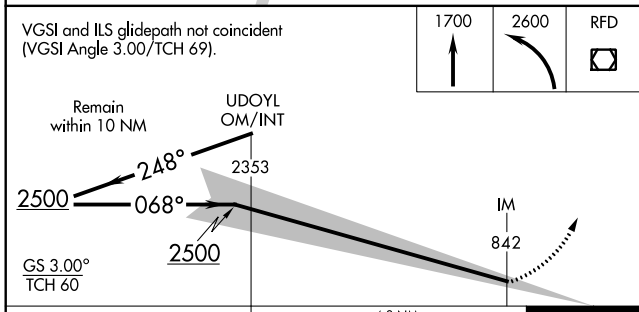
<p>⚠ CAT II: RVR 1000 authorized with specific OPSPEC, MSPEC, or LOA approval and use of autoland or HUD to touchdown.</p> <p>ASR</p>	<p>ALSIF-2</p>	<p>MISSED APPROACH: Climb to 1700 then climbing left turn to 2600 direct RFD VOR/DME and hold.</p>
---	-----------------------	---

<p>ATIS 127.6</p>	<p>ROCKFORD APP CON 121.0 327.0</p>	<p>ROCKFORD TOWER 118.1 290.375</p>	<p>GND CON 121.9 290.375</p>	<p>CLNC DEL 119.25</p>
------------------------------	--	--	---	-----------------------------------



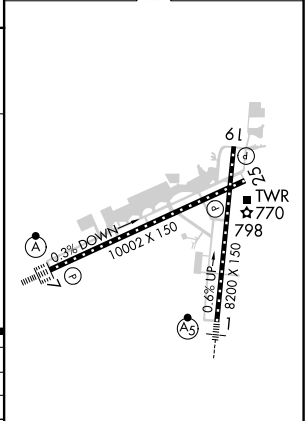
EC-3, 09 SEP 2021 to 07 OCT 2021

EC-3, 09 SEP 2021 to 07 OCT 2021



ELEV 742	D TDZE 742
----------	-------------------

CATEGORY	A	B	C	D
S-ILS 7	CAT II RA 114/12 100 DA 842			
S-ILS 7	CAT III RVR 06			



CATEGORY II & III ILS - SPECIAL AIRCREW & AIRCRAFT CERTIFICATION REQUIRED

REIL Rws 19 and 25
HIRL Rws 1-19 and 7-25
TDZ/CL Rws 1 and 7