

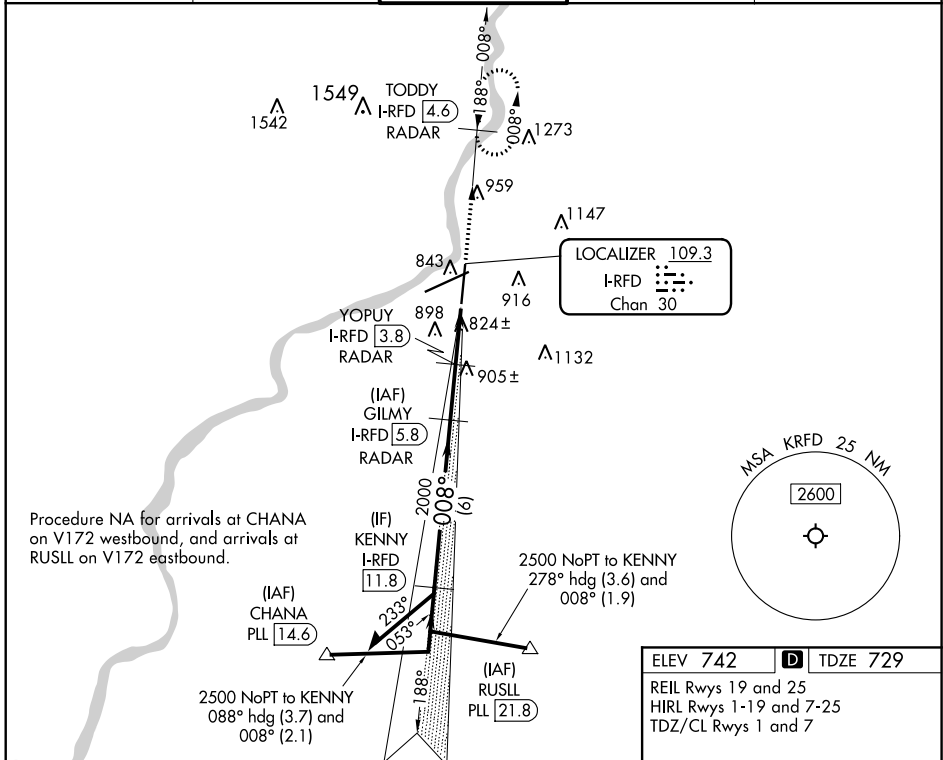
LOC/DME I-RFD <b>109.3</b> Chan 30	APP CRS <b>008°</b>	Rwy ldg <b>8199</b> TDZE <b>729</b> Apt Elev <b>742</b>
--	------------------------	---

# ILS or LOC RWY 1

CHICAGO/ROCKFORD INTL (RFD)

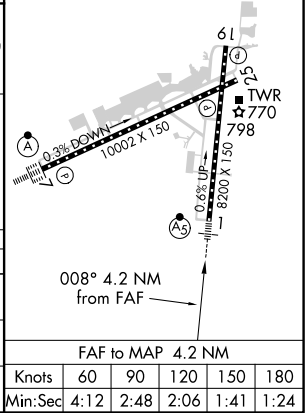
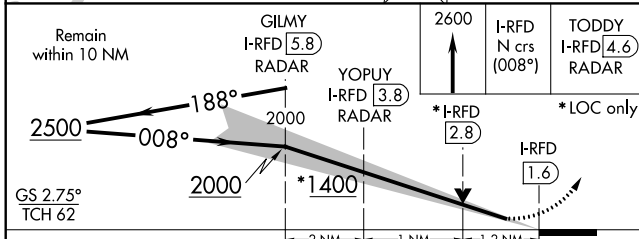
DME or RADAR required.	MALS R	MISSED APPROACH: Climb to 2600 on I-RFD localizer N course (008°) to TODDY/4.6 DME/RADAR and hold, continue climb-in-hold to 2600.
ASR For arrival ALS, increase S-LOC 1 Cat C/D visibility to RVR 6000.	AS	

ATIS <b>127.6</b>	ROCKFORD APP CON <b>121.0 327.0</b>	ROCKFORD TOWER <b>118.1 290.375</b>	GND CON <b>121.9 290.375</b>	CLNC DEL <b>119.25</b>
----------------------	--	--	---------------------------------	---------------------------



Procedure NA for arrivals at CHANA on V172 westbound, and arrivals at RUSLL on V172 eastbound.

ELEV 742	TDZE 729
REIL Rwy 19 and 25 HIRL Rwy 1-19 and 7-25 TDZ/CL Rwy 1 and 7	



CATEGORY	A	B	C	D
S-ILS 1	929/24		200 (200-½)	
S-LOC 1	1140/24	411 (400-½)	1140/40	411 (400-¾)
CIRCLING	1220-1 478 (500-1)	1280-1 538 (600-1)	1320-1½ 578 (600-1½)	1460-2¼ 718 (800-2¼)

FAF to MAP 4.2 NM					
Knots	60	90	120	150	180
Min:Sec	4:12	2:48	2:06	1:41	1:24

EC-3, 09 SEP 2021 to 07 OCT 2021

EC-3, 09 SEP 2021 to 07 OCT 2021