

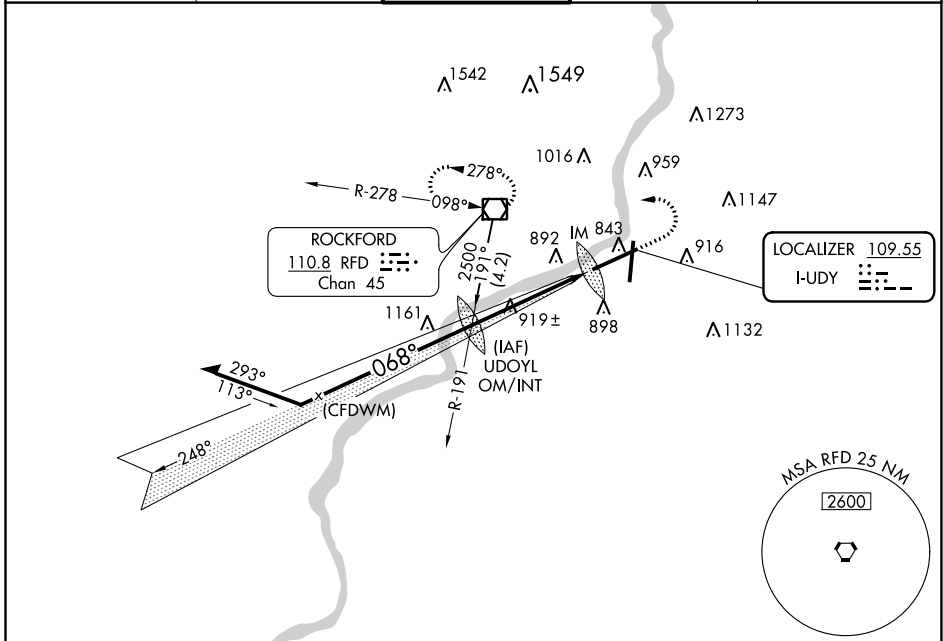
LOC I-UDY 109.55	APP CRS 068°	Rwy Idg 10002 TDZE 742 Apt Elev 742
----------------------------	------------------------	--

ILS or LOC RWY 7

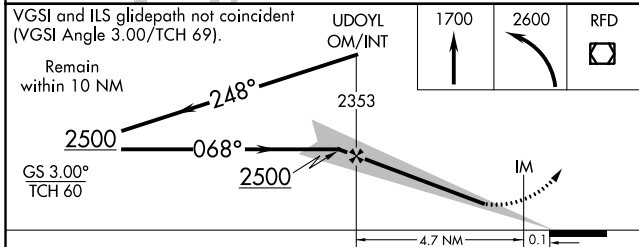
CHICAGO/ROCKFORD INTL (RFD)

<p>ASR</p>	<p>ALSF-2</p>	MISSED APPROACH: Climb to 1700 then climbing left turn to 2600 direct RFD VOR/DME and hold.

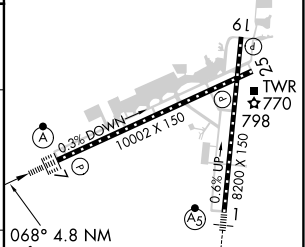
ATIS 127.6	ROCKFORD APP CON 121.0 327.0	ROCKFORD TOWER 118.1 290.375	GND CON 121.9 290.375	CLNC DEL 119.25
----------------------	--	--	---------------------------------	---------------------------



VGSI and ILS glidepath not coincident (VGSI Angle 3.00/TCH 69).
Remain within 10 NM



ELEV 742		TDZE 742
----------	--	----------



CATEGORY	A	B	C	D		
S-ILS 7	942/18		200 (200-½)			
S-LOC 7	1200/24		458 (500-½)			
	1220-1	1280-1	1320-1½	1460-2¼		
	478 (500-1)	538 (600-1)	578 (600-1½)	718 (800-2¼)		
	1200/50					
	458 (500-1)					
	FAF to MAP 4.8 NM					
	Knots	60	90	120	150	180
	Min:Sec	4:48	3:12	2:24	1:55	1:36

EC-3, 09 SEP 2021 to 07 OCT 2021

EC-3, 09 SEP 2021 to 07 OCT 2021