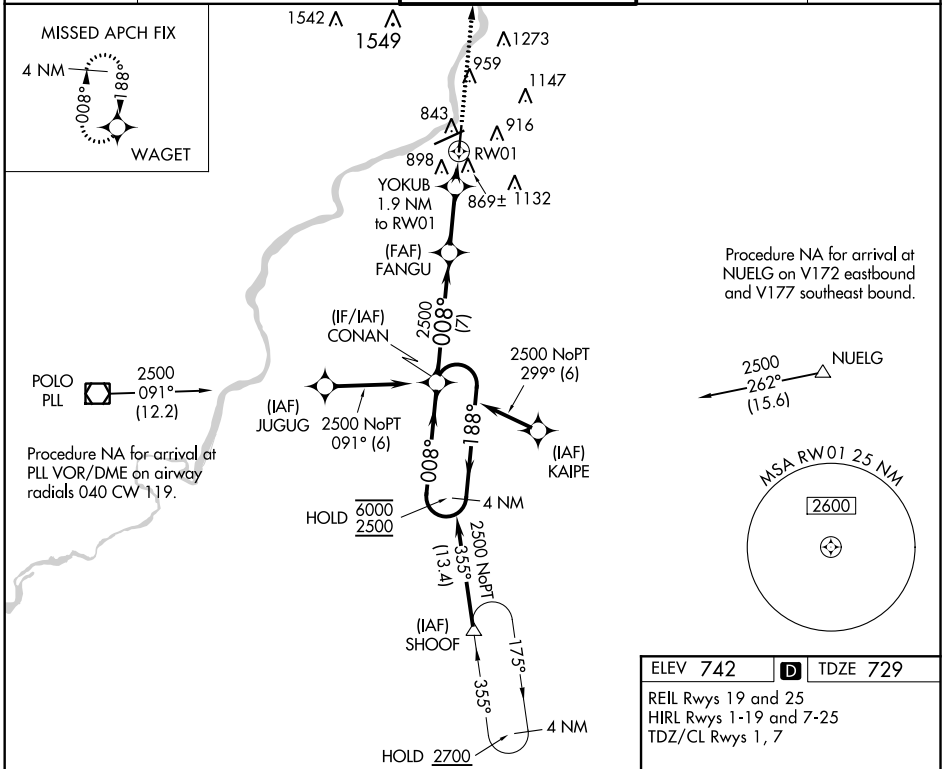


WAAS CH 42720 W01A	APP CRS 008°	Rwy Idg TDZE Apt Elev	8199 729 742
--	------------------------	-----------------------------	---

RNAV (GPS) RWY 1

CHICAGO/ROCKFORD INTL (RFD)

RNP APCH.		MALSR		MISSED APPROACH: Climb to 2500 direct WAGET and hold.	
For uncompensated Baro-VNAV systems, procedure NA below -16°C or above 39°C. For inop ALS, increase LNAV Cats C and D visibility to RVR 6000. # RVR 1800 authorized with use of FD or AP or HUD to DA.					
ATIS 127.6	ROCKFORD APP CON 121.0 327.0	ROCKFORD TOWER 118.1 290.375	GND CON 121.9 290.375	CLNC DEL 119.25	

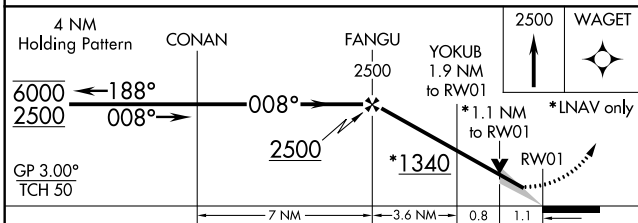


EC-3, 09 SEP 2021 to 07 OCT 2021

EC-3, 09 SEP 2021 to 07 OCT 2021

ELEV 742	D TDZE 729
----------	-------------------

REIL Rwy 19 and 25
HIRL Rwy 1-19 and 7-25
TDZ/CL Rwy 1, 7



CATEGORY	A	B	C	D
LPV DA#		929/24	200 (200-½)	
LNAV/VNAV DA		1200/60	471 (500-1¼)	
LNAV MDA	1120/24	391 (400-½)	1120/35	391 (400-¾)
C CIRCLING	1220-1 478 (500-1)	1280-1 538 (600-1)	1320-1½ 578 (600-1½)	1460-2¼ 718 (800-2¼)

