

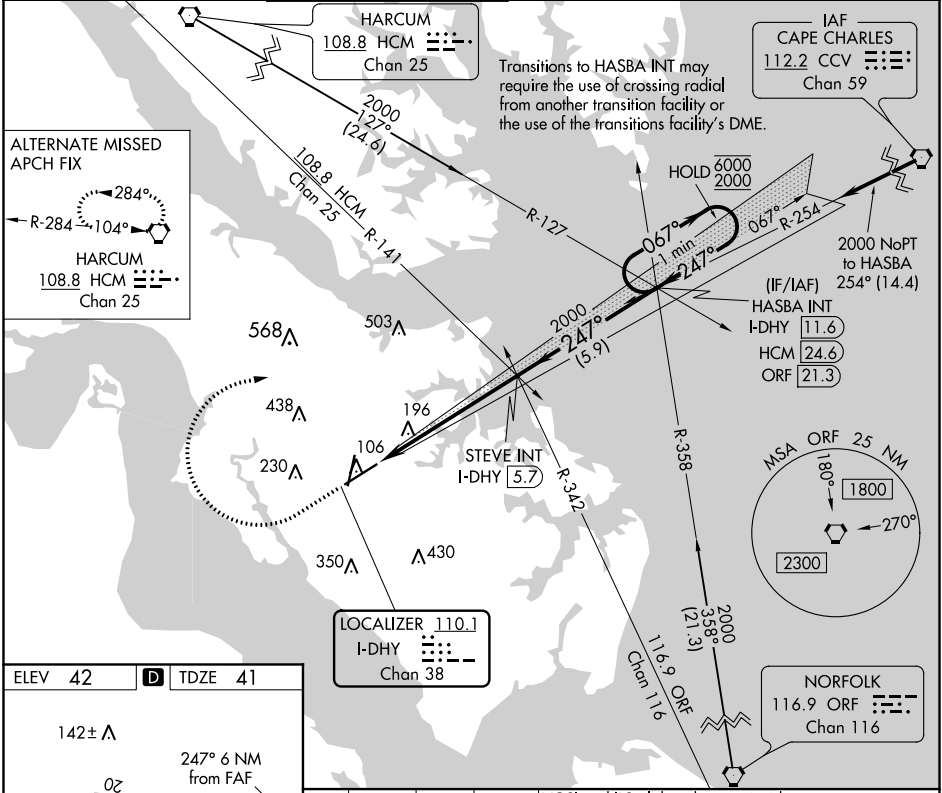
LOC/DME I-DHY	APP CRS	Rwy Idg TDZE	8003
<b>110.1</b>	<b>247°</b>		<b>41</b>
Chan <b>38</b>		Apt Elev	<b>42</b>

# ILS or LOC RWY 25

NEWPORT NEWS/WILLIAMSBURG INTL (PHF)

**MISSED APPROACH:** Climb to 500 then climbing right turn to 2500 on heading 080° and CCV VORTAC R-254 to HASBA INT/I-DHY 11.6 DME and hold.

ATIS <b>128.65</b>	NORFOLK APP CON <b>125.7</b>	NEWPORT NEWS TOWER ★ <b>118.7</b> (CTAF) <b>257.9</b>	GND CON <b>121.9 348.6</b>	CLNC DEL <b>121.65 225.4</b>	UNICOM <b>122.95</b>
-----------------------	---------------------------------	--	-------------------------------	---------------------------------	-------------------------

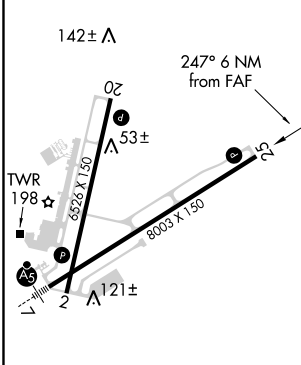


**ALTERNATE MISSED APCH FIX**

R-284 104°

HARCUM 108.8 HCM Chan 25

ELEV 42	D TDZE 41
---------	-----------



500 2500

hdg 080°

CCV R-254 HASBA INT

STEVE INT I-DHY 5.7 HASBA INT I-DHY 11.6

One Minute Holding Pattern

\*LOC only

I-DHY 0.9 I-DHY 0.3

2000 247° 067° 6000 2000

GS 3.00° TCH 55

CATEGORY	A	B	C	D
S-ILS 25	241-¾ 200 (200-¾)			
S-LOC 25	480-1	439 (500-1)	480-1¼	439 (500-1¼)
<input checked="" type="checkbox"/> CIRCLING	520-1 478 (500-1)	540-1 498 (500-1)	760-2 718 (800-2)	780-2¼ 738 (800-2¼)

REIL Rws 20 and 25

HIRL Rws 2-20 and 7-25

FAF to MAP 6 NM

Knots	60	90	120	150	180
Min:Sec	6:00	4:00	3:00	2:24	2:00

NE-3, 09 SEP 2021 to 07 OCT 2021

NE-3, 09 SEP 2021 to 07 OCT 2021