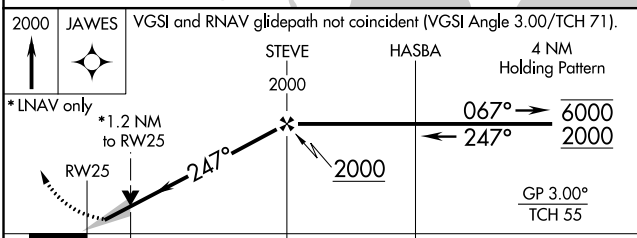
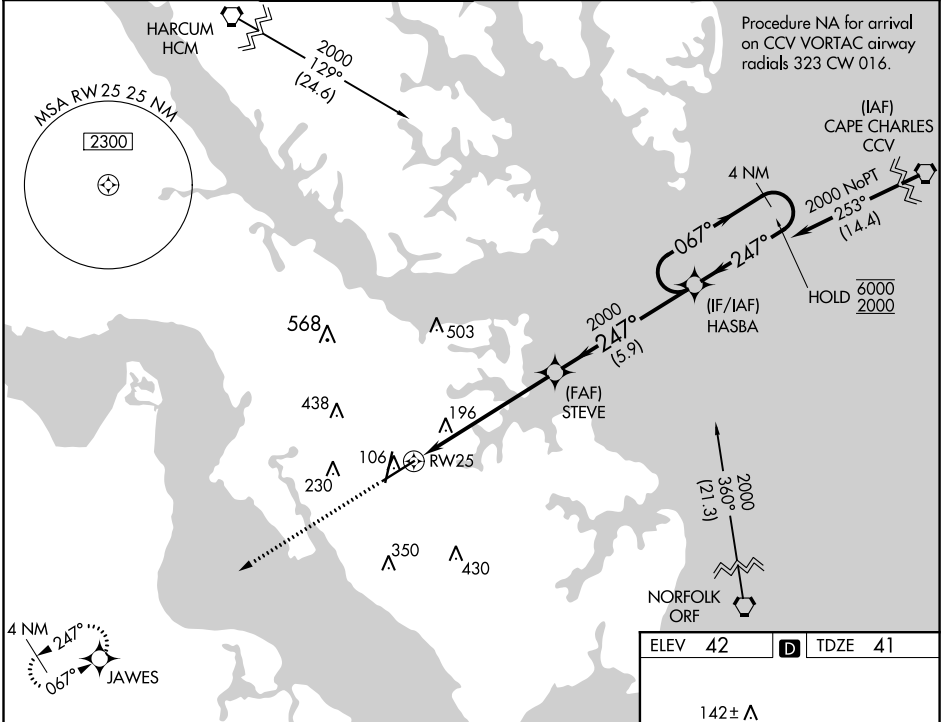


WAAS CH <b>45510</b> <b>W25A</b>	APP CRS <b>247°</b>	Rwy Idg <b>8003</b> TDZE <b>41</b> Apt Elev <b>42</b>
--	------------------------	---

# RNAV (GPS) RWY 25

NEWPORT NEWS/WILLIAMSBURG INTL (PHF)

RNP APCH.		MISSED APPROACH: Climb to 2000 direct JAWES and hold.			
ATIS <b>128.65</b>	NORFOLK APP CON <b>125.7</b>	<b>NEWPORT NEWS TOWER*</b> <b>118.7(CTAF) 257.9</b>	GND CON <b>121.9 348.6</b>	CLNC DEL <b>121.65 225.4</b>	UNICOM <b>122.95</b>



ELEV 42	TDZE 41
142 ± A	121 ± A
02	53 ±
TWR 198	8003 X 150
AS	121 ±
2	121 ±
REIL Rwy 20 and 25	HIRL Rwy 2-20 and 7-25

CATEGORY	A	B	C	D
LPV DA	241-3/4 200 (200-3/4)			
LNAV/VNAV DA	516-1 5/8 475 (500-1 5/8)			
LNAV MDA	480-1 439 (500-1)		480-1 1/4 439 (500-1 1/4)	
CIRCLING	520-1 478 (500-1)	540-1 498 (500-1)	760-2 718 (800-2)	780-2 1/4 738 (800-2 1/4)

NE-3, 09 SEP 2021 to 07 OCT 2021

NE-3, 09 SEP 2021 to 07 OCT 2021