

LOC/DME I-ONT 109.7 Chan 34	APP CRS 258°	Rwy Idg TDZE Apt Elev	26R 12197 932 944	26L 10200 926 944
---	------------------------	-----------------------------	---	---

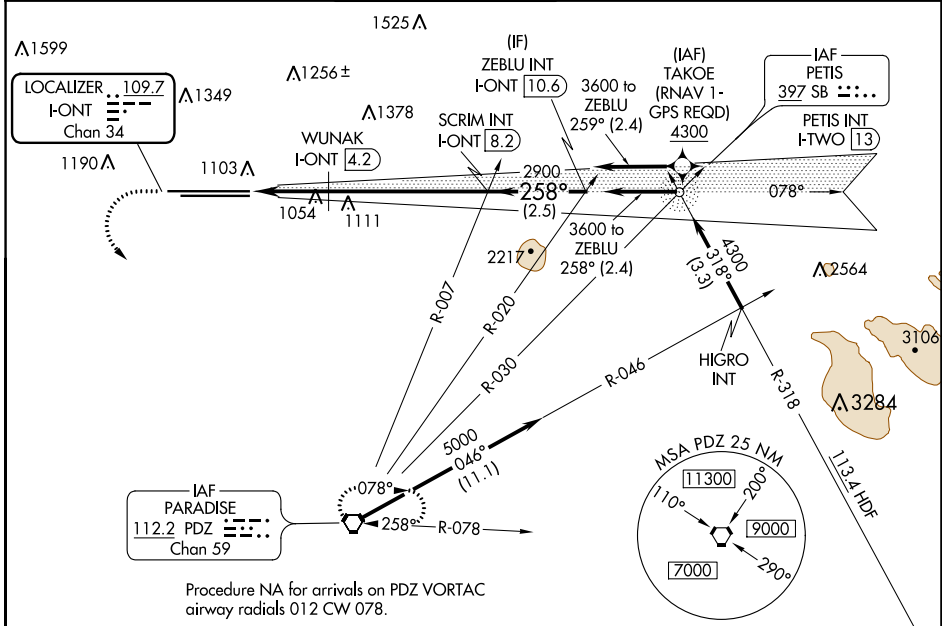
ILS or LOC RWY 26R

ONTARIO INTL (ONT)

⚠ Circling NA north of Rwy 8L-26R. Inop table does not apply to Sidestep 26L Cat A. For inop ALS, increase Sidestep 26L Cat B visibility to 1½ SM and Sidestep 26L Cat C to 2½ SM. #RVR 1800 authorized with use of FD or AP or HUD to DA.

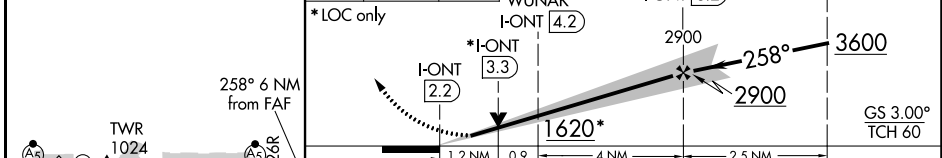
MALSR Rwy 26R	ALS-2 Rwy 26L	MISSED APPROACH: Climb to 2200 then climbing left turn to 4000 direct PDZ VORTAC and hold.
------------------	------------------	--

D-ATIS 124.25	SOCAL APP CON 127.0 318.2	ONTARIO TOWER 120.6 360.775	GND CON 121.9 257.8	CLNC DEL 118.1	CPDLC
-------------------------	-------------------------------------	---------------------------------------	-------------------------------	--------------------------	-------



Procedure NA for arrivals on PDZ VORTAC airway radials 012 CW 078.

ELEV 944	D TDZE 26R 932 TDZE 26L 926	2200	4000	PDZ	VGSI and ILS glidepath not coincident (VGSI Angle 3.00/TCH 75).	ZEBLU INT I-ONT 10.6
----------	---------------------------------------	------	------	-----	---	----------------------



CATEGORY		A	B	C	D
S-ILS 26R#		1132/24		200 (200-½)	
S-LOC 26R		1620/24	688 (700-½)	1620-1½	688 (700-1½)
SIDESTEP 26L		1720/55	794 (800-1)	1720-1¾ 794 (800-1¾)	1720-2 794 (800-2)
WUNAK FIX MINIMUMS (DME REQUIRED)					
S-LOC 26R		1360/24	428 (500-½)	1360/40	428 (500-¾)
C CIRCLING		1620-1	676 (700-1)	1620-2 676 (700-2)	1620-2¼ 676 (700-2¼)

ONTARIO, CALIFORNIA
Amdt 5A 10OCT19

34°03'N-117°36'W

ONTARIO INTL (ONT) ILS or LOC RWY 26R

SW-3, 09 SEP 2021 to 07 OCT 2021

SW-3, 09 SEP 2021 to 07 OCT 2021