

JCKIE TWO ARRIVAL (RNAV) Transition Routes

AL-965 (FAA)

ONTARIO INTL (ONT)
ONTARIO, CALIFORNIA

SW-3, 09 SEP 2021 to 07 OCT 2021

SOCAL APP CON
127.0 318.2
D-ATIS
124.25
ONTARIO TOWER
120.6 360.775

NOTE: RADAR required.

NOTE: RNAV 1.

NOTE: DME/DME/IRU or GPS required.

NOTE: Turbojet aircraft only.

NOTE: Expect local area altimeter setting FL200.

NOTE: HEYNG transition ATC assigned only.

NOTE: FEYLA transition Las Vegas area departures only.

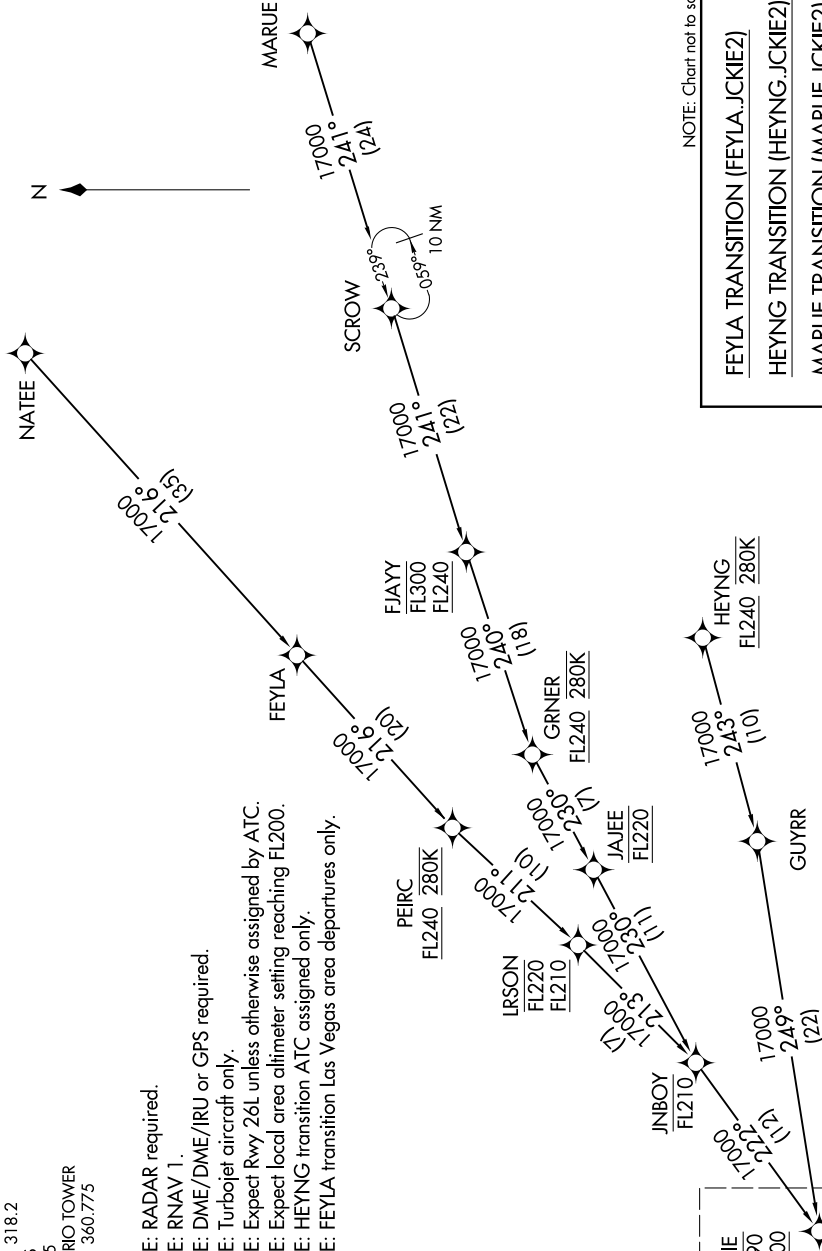
NOTE: Chart not to scale.

FEYLA TRANSITION (FEYLA.JCKIE2)

HEYNG TRANSITION (HEYNG.JCKIE2)

MARUE TRANSITION (MARUE.JCKIE2)

NATEE TRANSITION (NATEE.JCKIE2)



(CONTINUED ON FOLLOWING PAGE)

JCKIE
FL190
17000
See following
page for
arrival route.

JCKIE TWO ARRIVAL (RNAV) Transition Routes

ONTARIO, CALIFORNIA
ONTARIO INTL (ONT)

SW-3, 09 SEP 2021 to 07 OCT 2021