

# RNAV (RNP) Z RWY 26L

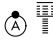
ONTARIO INTL (ONT)

APP CRS	Rwy Idg	<b>10200</b>
<b>258°</b>	TDZE	<b>926</b>
	Apt Elev	<b>944</b>

**RNP AR APCH.**

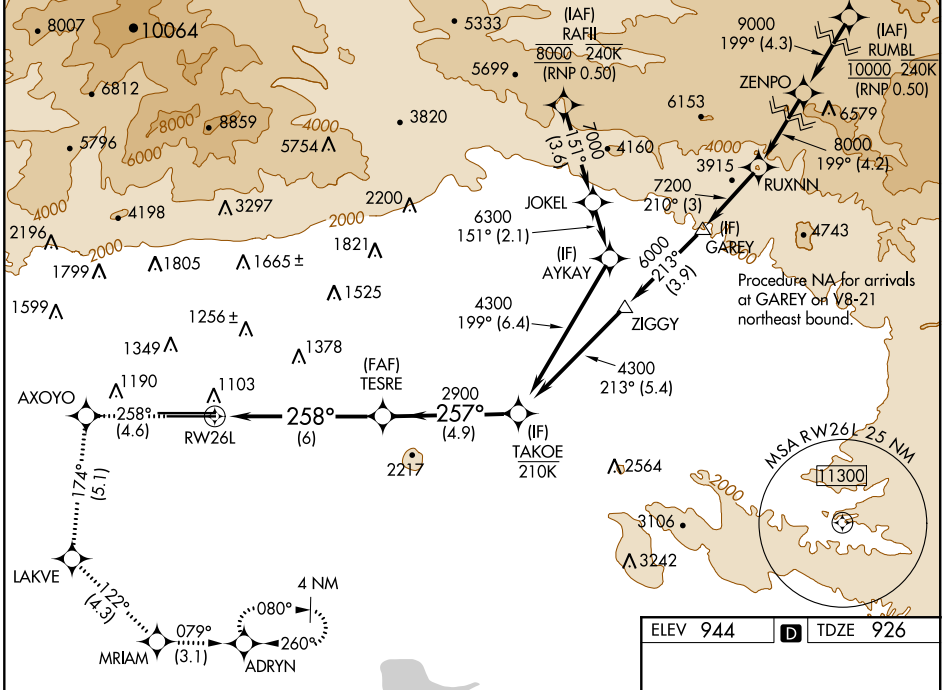
▼ For uncompensated Baro-VNAV systems, procedure NA below 1°C or above 54°C. For inop ALS, increase RNP 0.15 visibility all Cats to RVR 4500, RNP 0.18 visibility all Cats to RVR 5500, RNP 0.30 visibility all Cats to RVR 6000.

**ALSF-2**



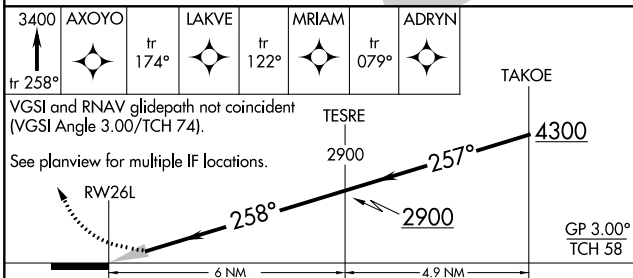
**MISSED APPROACH:** Climb to 3400 on track 258° to AXOYO and track 174° to LAKVE and track 122° to MRIAM and track 079° to ADRYN and hold.

D-ATIS	SOCAL APP CON	ONTARIO TOWER	GND CON	CLNC DEL	CPDLC
<b>124.25</b>	<b>127.0 318.2</b>	<b>120.6 360.775</b>	<b>121.9 257.8</b>	<b>118.1</b>	



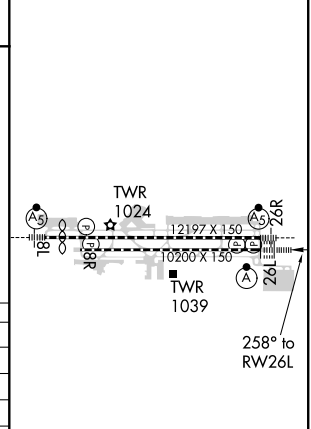
SW-3, 09 SEP 2021 to 07 OCT 2021

SW-3, 09 SEP 2021 to 07 OCT 2021



CATEGORY	A	B	C	D
RNP 0.15 DA		1218/24	292 (300-½)	
RNP 0.18 DA		1274/30	348 (400-¾)	
RNP 0.30 DA		1340/40	414 (400-¾)	

ELEV 944	<b>D</b>	TDZE 926
----------	----------	----------



**AUTHORIZATION REQUIRED**

TDZ/CL Rws 8L and 26L  
 HIRL Rws 8L-26R and 8R-26L