

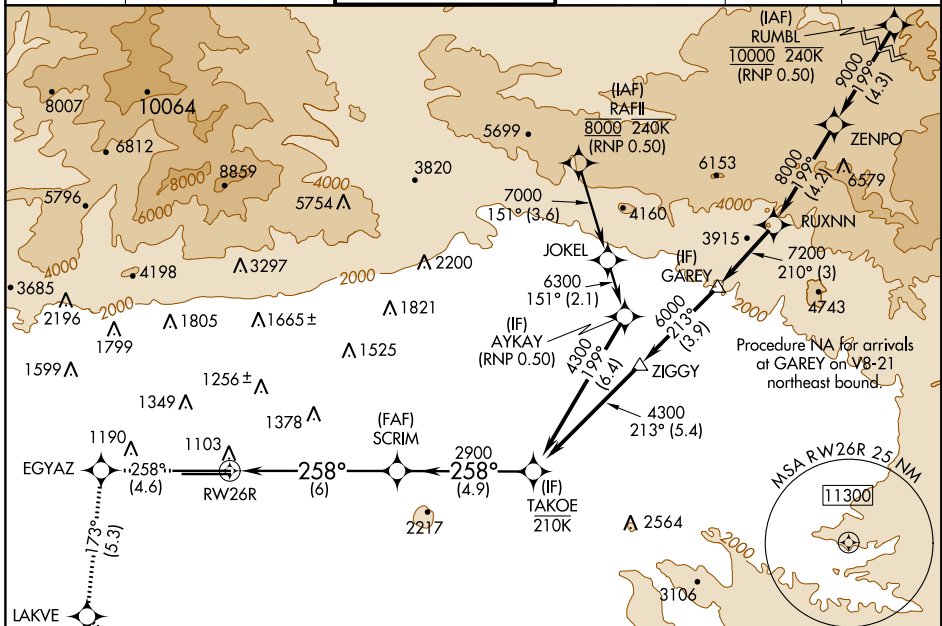
APP CRS	Rwy Idg	<b>12197</b>
<b>258°</b>	TDZE	<b>932</b>
	Apt Elev	<b>944</b>

# RNAV (RNP) Z RWY 26R

ONTARIO INTL (ONT)

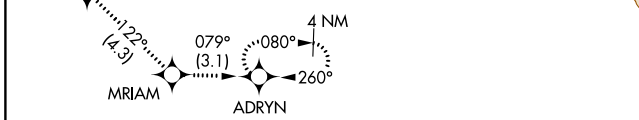
<b>RNP AR APCH.</b> ▼ For uncompensated Baro-VNAV systems, procedure NA below 1°C or above 54°C. For inop ALS, increase RNP 0.30 visibility all Cats to RVR 6000.	MALSR 	MISSED APPROACH: Climb to 3400 on track 258° to EGYAZ and track 173° to LAKVE and track 122° to MARIAM and track 079° to ADRYN and hold.

D-ATIS <b>124.25</b>	SOCAL APP CON <b>127.0 318.2</b>	ONTARIO TOWER <b>120.6 360.775</b>	GND CON <b>121.9 257.8</b>	CLNC DEL <b>118.1</b>	CPDLC
-------------------------	-------------------------------------	---------------------------------------	-------------------------------	--------------------------	-------

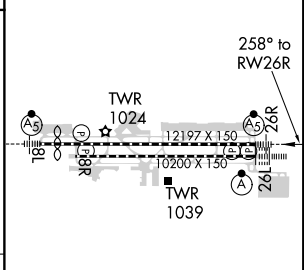
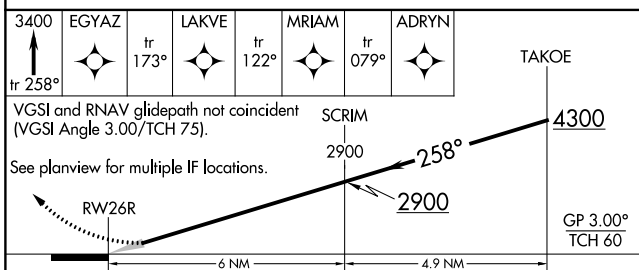


SW-3, 09 SEP 2021 to 07 OCT 2021

SW-3, 09 SEP 2021 to 07 OCT 2021



ELEV	944	<b>D</b>	TDZE	932
------	-----	----------	------	-----



CATEGORY	A	B	C	D
RNP 0.12 DA		1265/26	333 (400-½)	
RNP 0.30 DA		1340/40	408 (400-¾)	

**AUTHORIZATION REQUIRED**

TDZ/CL Rwsy 8L and 26L  
HIRL Rwsy 8L-26R and 8R-26L