

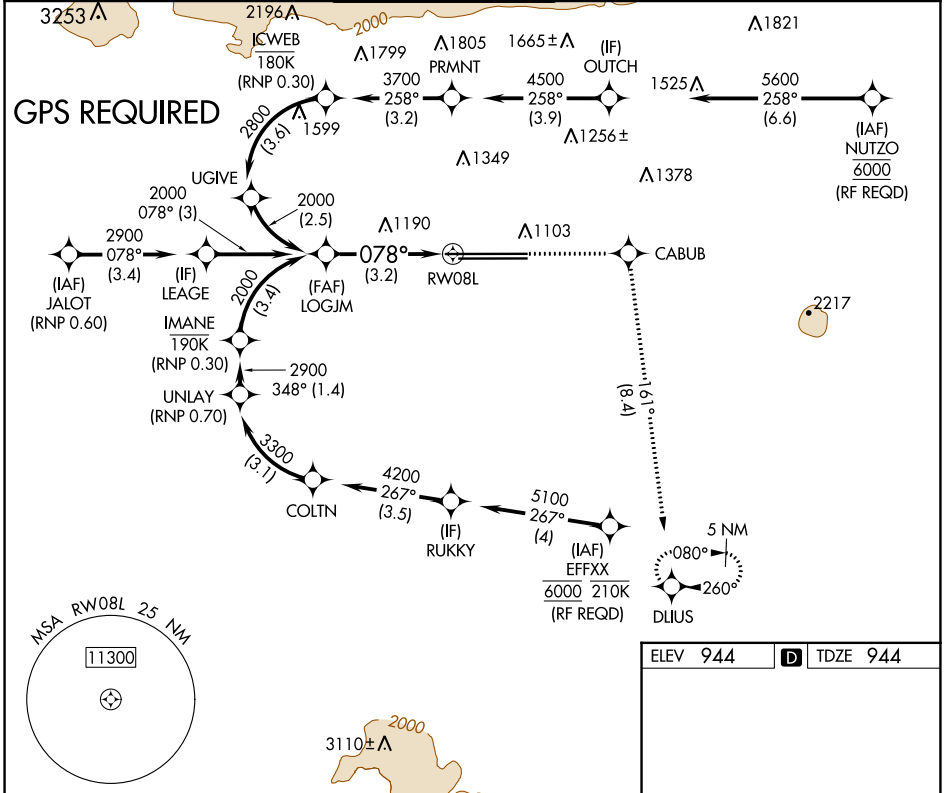
APP CRS	Rwy Idg	<b>11200</b>
<b>078°</b>	TDZE	<b>944</b>
	Apt Elev	<b>944</b>

# RNAV (RNP) Z RWY 8L

ONTARIO INTL (ONT)

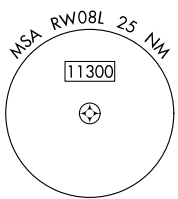
<b>▼</b> For uncompensated Baro-VNAV systems, procedure NA below 2°C (36°F) or above 54°C (130°F).	<b>MALSR</b> 	<b>MISSED APPROACH:</b> Climb to 5300 direct CABUB on track 161° to DLIUS and hold, continue climb-in-hold to 5300.
--	------------------	---

D-ATIS <b>124.25</b>	SOCAL APP CON <b>127.0 318.2</b>	<b>ONTARIO TOWER</b> <b>120.6 360.775</b>	GND CON <b>121.9 257.8</b>	CLNC DEL <b>118.1</b>	CPDLC
-------------------------	-------------------------------------	--	-------------------------------	--------------------------	-------

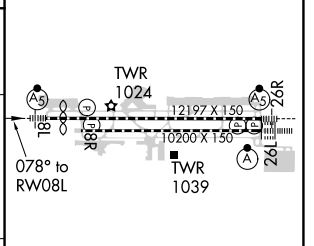
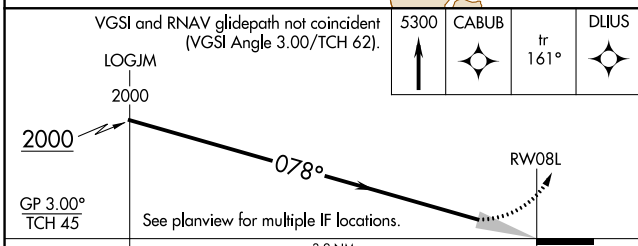


SW-3, 09 SEP 2021 to 07 OCT 2021

SW-3, 09 SEP 2021 to 07 OCT 2021



ELEV 944	<b>D</b> TDZE 944
----------	-------------------



CATEGORY	A	B	C	D
RNP 0.30 DA	1490-13/8		546 (600-13/8)	

## AUTHORIZATION REQUIRED

TDZ/CL Rwy 8L and 26L  
HIRL Rwy 8L-26R and 8R-26L