

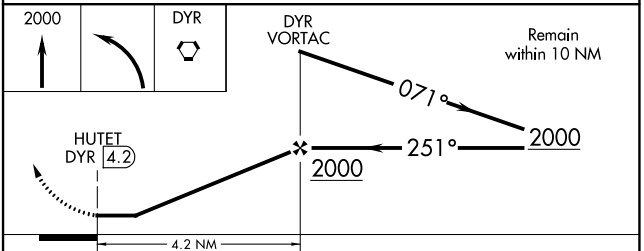
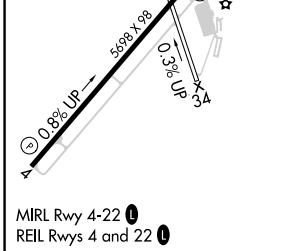
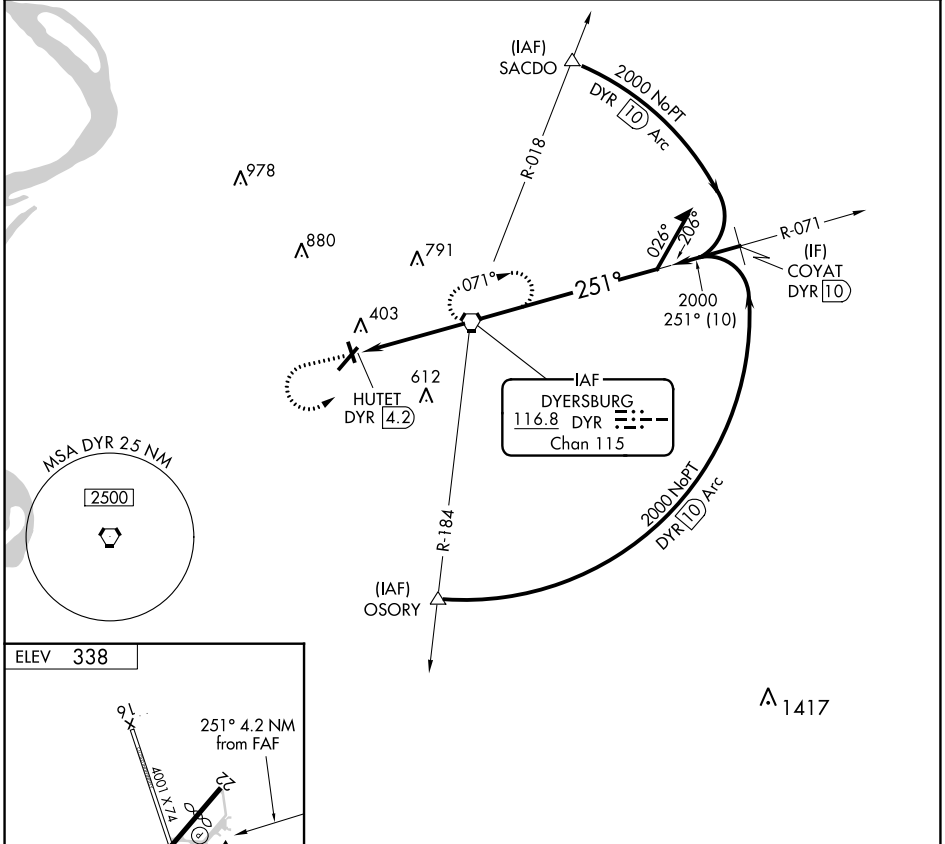
VORTAC DYR <b>116.8</b> Chan <b>115</b>	APP CRS <b>251°</b>	Rwy ldg TDZE Apt Elev <b>338</b>	<b>N/A</b> <b>N/A</b> <b>338</b>
-----------------------------------------------	------------------------	----------------------------------------	----------------------------------------

**VOR-A**  
DYERSBURG RGNL (DYR)

⚠ When local altimeter setting not received, use Blytheville Muni altimeter setting and increase all MDA 60 feet; increase Circling Cat C visibility ¼ SM.  
 ⚠ Night landing: Rwy 16, 34 NA. Helicopter visibility reduction below 1 SM NA.

MISSED APPROACH: Climb to 2000 then left turn direct DYR VORTAC and hold.

AWOS-3PT <b>135.625</b>	MEMPHIS CENTER <b>134.65 316.15</b>	UNICOM <b>123.05</b> (CTAF) <b>0</b>
----------------------------	----------------------------------------	-----------------------------------------



FAF to MAP 4.2 NM					
Knots	60	90	120	150	180
Min:Sec	4:12	2:48	2:06	1:41	1:24
CATEGORY	A	B	C	D	
CIRCLING	740-1 402 (500-1)	800-1 462 (500-1)	1040-2 702 (800-2)	1240-3 902 (1000-3)	

SE-1, 09 SEP 2021 to 07 OCT 2021

SE-1, 09 SEP 2021 to 07 OCT 2021