

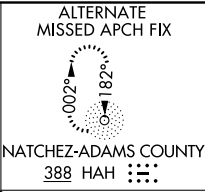
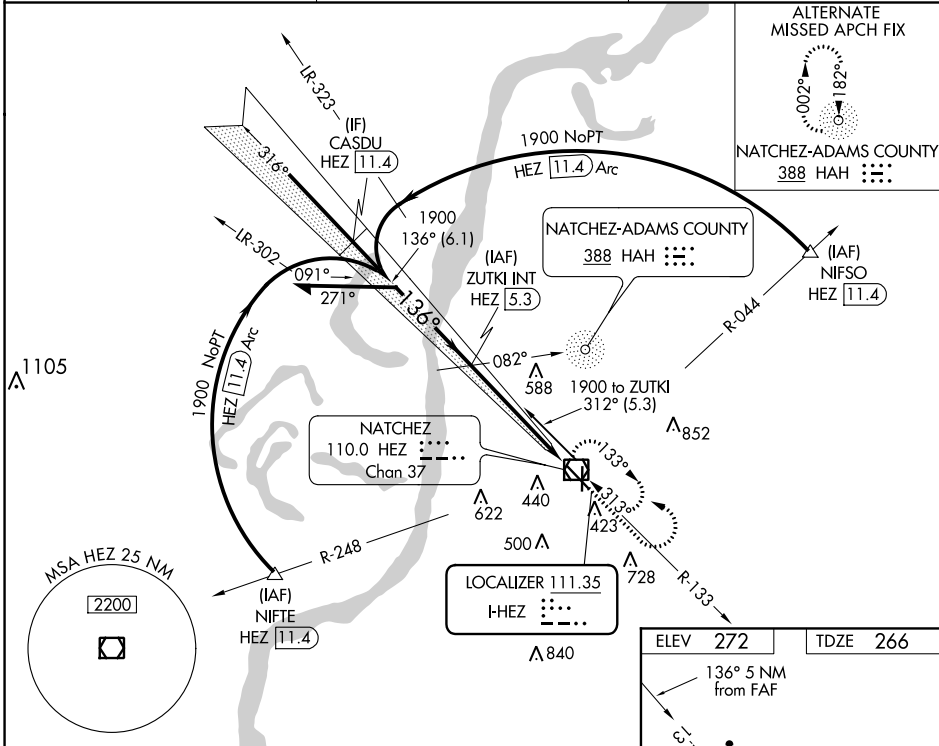
LOC I-HEZ 111.35	APP CRS 136°	Rwy Idg TDZE Apt Elev	6500 266 272
----------------------------	------------------------	-----------------------------	---

ILS or LOC RWY 13

HARDY-ANDERS FIELD NATCHEZ-ADAMS COUNTY (HE/Z)

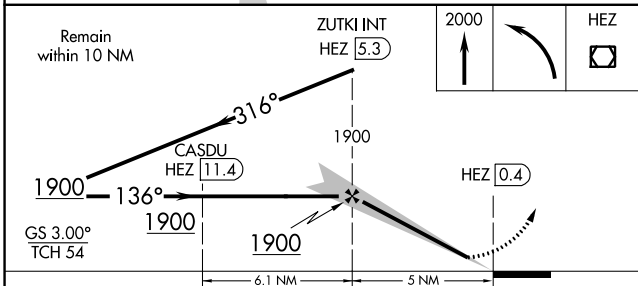
ADF or DME required for procedure entry.	MALSR 	MISSED APPROACH: Climb to 2000 then left turn direct HEZ VOR/DME and hold.
Circling to Rwy 36 NA at night. For inop ALS, increase S-LOC 13 Cat C and D visibility to 1 3/8 SM.		

AWOS-3PT 124.675	HOUSTON CENTER 120.975 299.6	UNICOM 122.8 (CTAF)
----------------------------	--	-------------------------------

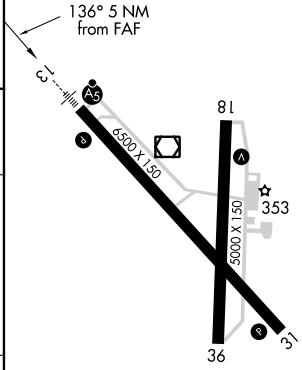


SC-4, 09 SEP 2021 to 07 OCT 2021

SC-4, 09 SEP 2021 to 07 OCT 2021



ELEV 272	TDZE 266
----------	----------



CATEGORY	A	B	C	D
	S-ILS 13	466-1/2		200 (200-1/2)
S-LOC 13	760-1/2	494 (500-1/2)	760-1	494 (500-1)
CIRCLING	760-1	800-1	1020-2 1/4	1220-3
	488 (500-1)	528 (600-1)	748 (800-2 1/4)	948 (1000-3)

FAF to MAP 5 NM					
Knots	60	90	120	150	180
Min:Sec	5:00	3:20	2:30	2:00	1:40