

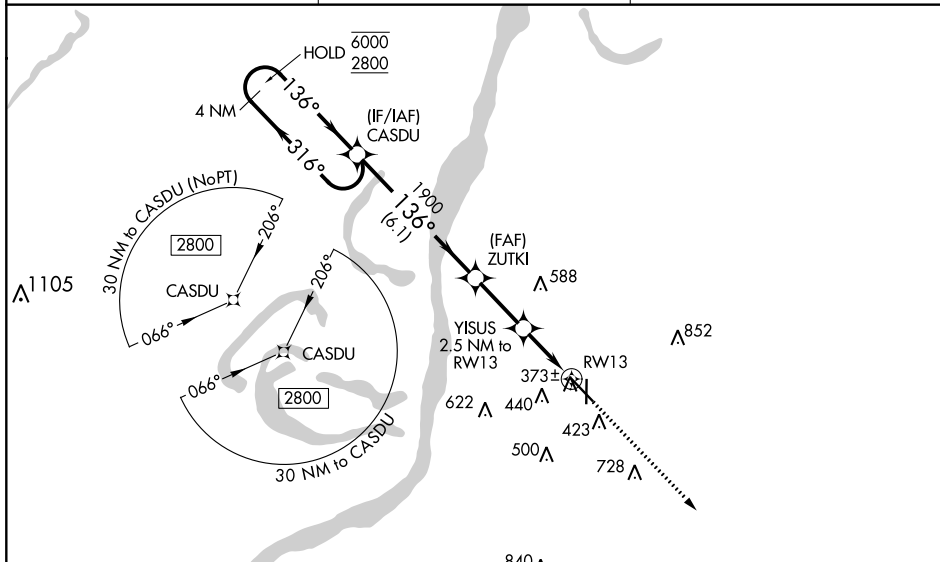
WAAS CH <b>50505</b> <b>W13A</b>	APP CRS <b>136°</b>	Rwy ldg <b>6500</b> TDZE <b>266</b> Apt Elev <b>272</b>
--	------------------------	---

# RNAV (GPS) RWY 13

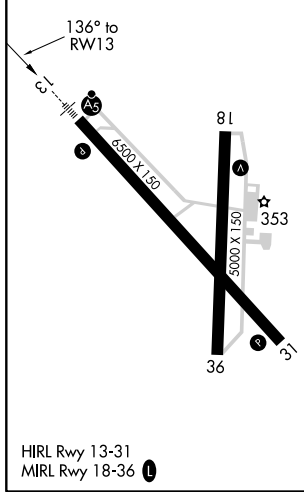
HARDY-ANDERS FIELD NATCHEZ-ADAMS COUNTY (HE/Z)

<p>RNP APCH.</p> <p><b>⚠</b> Circling to Rwy 36 NA at night. For uncompensated Baro-VNAV systems, LNAV/VNAV NA below -15° C or above 54° C. For inop ALS, increase LNAV/VNAV all Cats visibility to 7/8 SM and LNAV Cat C and D visibility to 1 1/8 SM.</p>		<p>MALSR</p>	<p>MISSED APPROACH: Climb to 2800 direct WEGRA and hold.</p>
---	--	--------------	--

AWOS-3PT <b>124.675</b>	HOUSTON CENTER <b>120.975 299.6</b>	UNICOM <b>122.8 (CTAF)</b>
----------------------------	--	-------------------------------



ELEV 272	TDZE 266
----------	----------



<p>4 NM Holding Pattern</p> <p>6000 ← 316°</p> <p>2800 → 136°</p> <p>GP 3.00° TCH 54</p>	CASDU		ZUTKI	YISUS	WEGRA
	4 NM	2.5 NM	1.4 NM	1.1 NM	4 NM
	6.1 NM	2.5 NM	1.4 NM	1.1 NM	
<p>2800 WEGRA</p> <p>* LNAV only</p>					
	A	B	C	D	
LPV DA	466-1/2		200 (200-1/2)		
LNAV/VNAV DA	534-1/2		268 (300-1/2)		
LNAV MDA	680-1/2	414 (500-1/2)	680-3/4	414 (500-3/4)	
CIRCLING	740-1	800-1	1020-2 1/4	1220-3	
	468 (500-1)	528 (600-1)	748 (800-2/4)	948 (1000-3)	

SC-4, 09 SEP 2021 to 07 OCT 2021

SC-4, 09 SEP 2021 to 07 OCT 2021