


LOC I-FOD 109.1	APP CRS 063°	Rwy ldg TDZE Apt Elev	6547 1107 1156
---------------------------	------------------------	-----------------------------	---

ILS or LOC RWY 6

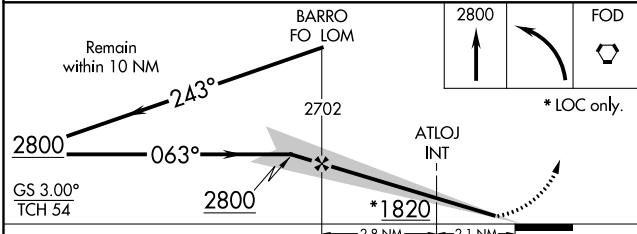
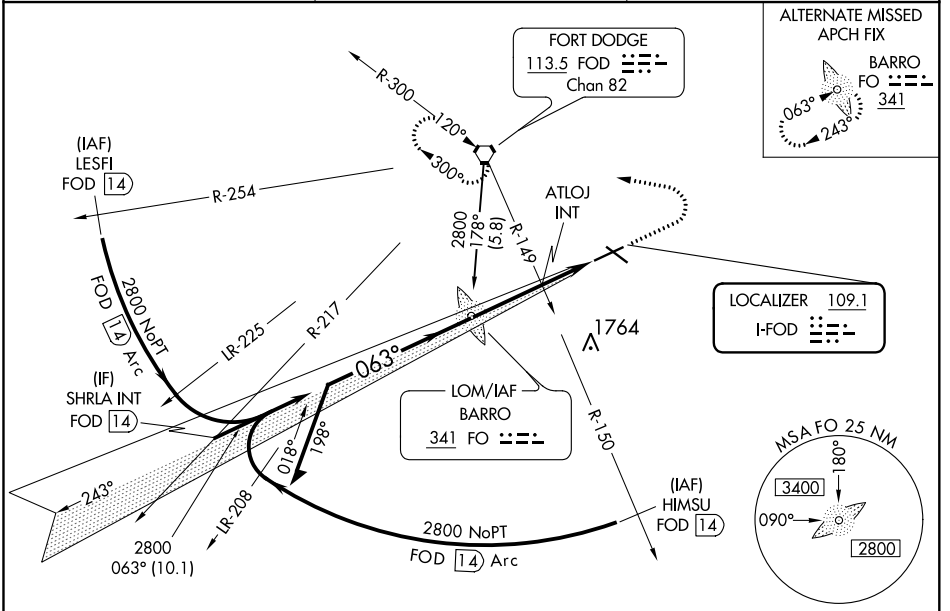
FORT DODGE RGNL (FOD)

NA When local altimeter setting not received, use Webster City altimeter setting: increase all DA to 1349 feet; increase all MDAs 60 feet and S-LOC 6 Cats B/C/D and Circling Cat C visibility 1/4 SM. For inoperative MALSR when using Webster City altimeter setting, increase S-ILS visibility all Cats to 1 mile.

MALSR 

MISSED APPROACH: Climb to 2800 then left turn direct FOD VORTAC and hold.

AWOS-3PT 118.775	MINNEAPOLIS CENTER 134.0 288.3	UNICOM 123.0 (CTAF)
----------------------------	--	-------------------------------



ELEV 1156	D TDZE 1107
-----------	--------------------

CATEGORY	A	B	C	D
S-ILS 6	1307-1/2 200 (200-1/2)			
S-LOC 6	1820-1/2	713 (700-1/2)	1820-1 1/2 713 (700-1 1/2)	1820-1 3/4 713 (700-1 3/4)
CIRCLING	1820-1	664 (700-1)	1820-1 3/4 664 (700-1 3/4)	2080-3 924 (1000-3)
ATLOJ FIX MINIMUMS (DUAL VOR RECEIVERS REQUIRED)				
S-LOC 6	1400-1/2 293 (300-1/2)		1400-3/4 293 (300-3/4)	
CIRCLING	1560-1 404 (500-1)	1620-1 464 (500-1)	1740-1 1/2 584 (600-1 1/2)	2080-3 924 (1000-3)

603° 4.9 NM from FAF

MIRL Rwy 12-30 **Ⓡ**
REIL Rwy 12, 24 and 30 **Ⓡ**
HIRL Rwy 6-24 **Ⓡ**

FAF to MAP 4.9 NM

Knots	60	90	120	150	180
Min:Sec	4:54	3:16	2:27	1:58	1:38

NC-3, 09 SEP 2021 to 07 OCT 2021

NC-3, 09 SEP 2021 to 07 OCT 2021