

|  |                        |                             |   |
|--|------------------------|-----------------------------|---|
| WAAS<br>CH <b>82615</b><br><b>W30A</b> | APP CRS<br><b>305°</b> | Rwy Idg<br>TDZE<br>Apt Elev | <b>5301</b><br><b>1142</b><br><b>1156</b> |
|--|------------------------|-----------------------------|---|

# RNAV (GPS) RWY 30

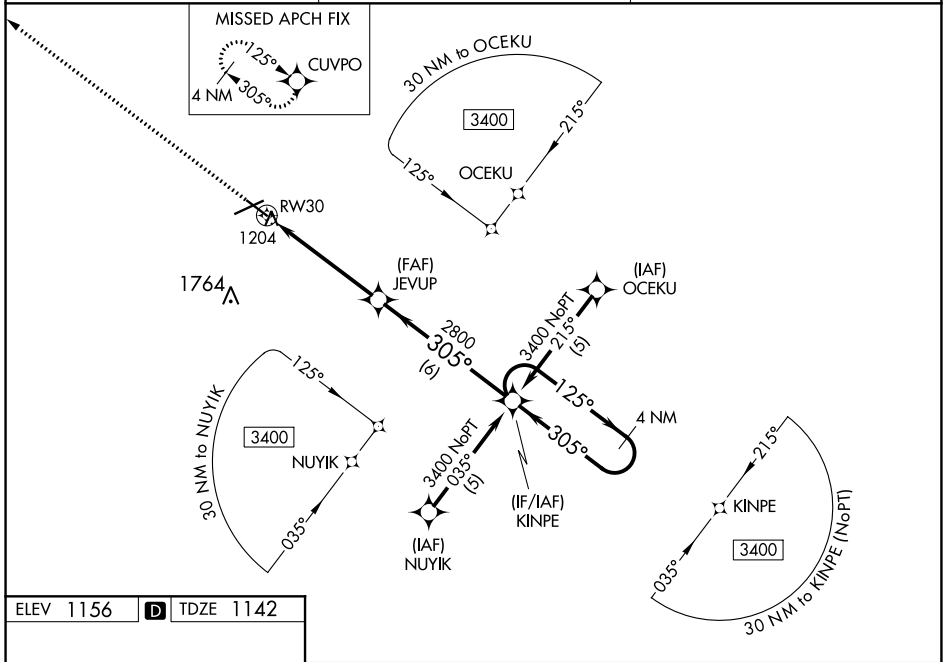
FORT DODGE RGNL (FOD)

RNP APCH.

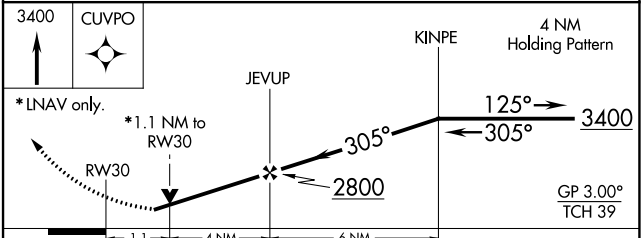
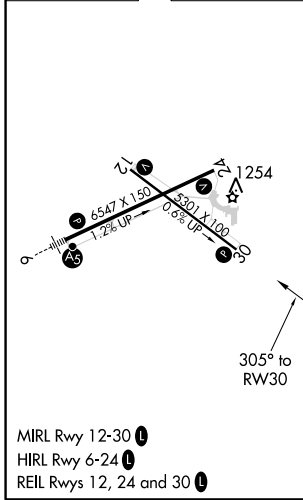
▼ For uncompensated Baro-VNAV systems, LNAV/VNAV NA below -17°C or above 54°C.  
 ▲ Helicopter visibility below ¼ SM NA. VDP and Baro-VNAV NA when using Webster City altimeter setting. When local altimeter setting not received, use Webster City altimeter setting: increase LPV DA to 1466 feet and all Cats visibility ¼ SM; increase LNAV/VNAV DA to 1516 feet; increase all MDA 60 feet and LNAV Cats C/D and Circling Cat C visibility ¼ SM.

MISSED APPROACH: Climb to 3400 direct CUVPO and hold.

|                            |  |                                 |
|----------------------------|--|---------------------------------|
| AWOS-3PT<br><b>118.775</b> | MINNEAPOLIS CENTER<br><b>134.0 288.3</b> | UNICOM<br><b>123.0 (CTAF) 0</b> |
|----------------------------|--|---------------------------------|



|           |          |           |
|-----------|----------|-----------|
| ELEV 1156 | <b>D</b> | TDZE 1142 |
|-----------|----------|-----------|



| CATEGORY     | A           | B           | C            | D            |
|--------------|-------------|-------------|--------------|--------------|
| LPV DA       | 1424-1      |             | 282 (300-1)  |              |
| LNAV/VNAV DA | 1474-1¼     |             | 332 (400-1¼) |              |
| LNAV MDA     | 1520-1      |             | 378 (400-1)  |              |
| CIRCLING     | 1560-1      | 1620-1      | 1740-1½      | 2080-3       |
|              | 404 (500-1) | 464 (500-1) | 584 (600-1½) | 924 (1000-3) |

FORT DODGE, IOWA  
 Amdt 1B 20MAY21

42°33'N-94°12'W

# RNAV (GPS) RWY 30

NC-3, 09 SEP 2021 to 07 OCT 2021