

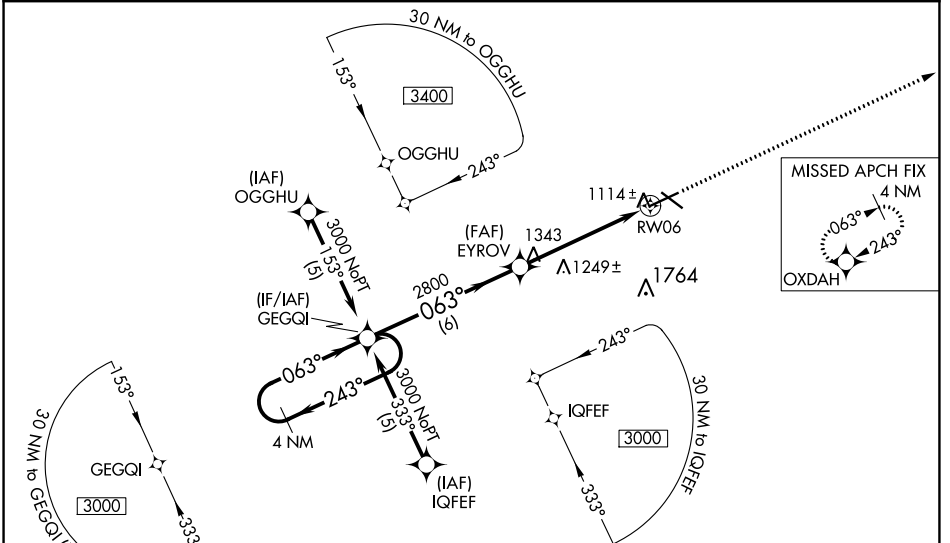
WAAS CH 61015 W06A	APP CRS 063°	Rwy Idg TDZE Apt Elev	6547 1107 1156
--	------------------------	-----------------------------	---

RNAV (GPS) RWY 6

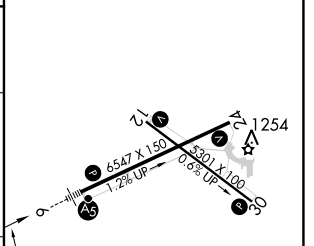
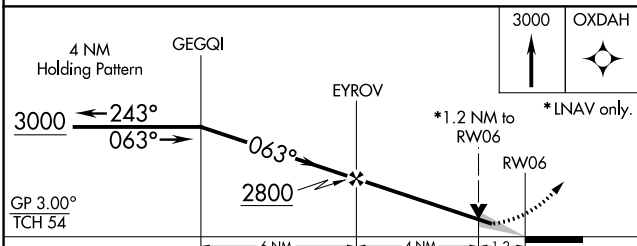
FORT DODGE RGNL (FOD)

RNP APCH.		MALSRL	MISSED APPROACH: Climb to 3000 direct OXDAH and hold.
<p>▼ Baro-VNAV NA when using Webster City altimeter setting. For uncompensated Baro-VNAV systems, LNAV/VNAV NA below -17°C or above 54°C. VDP NA when using Webster City altimeter setting. When local altimeter setting not received, use Webster City altimeter setting: increase LPV DA to 1349 feet; increase LNAV/VNAV DA to 1567 feet and all Cats visibility ¼ SM; increase all MDAs 60 feet and LNAV Cats C/D and Circling Cat C visibility ¼ SM. For nonoperative MALSRL when using Webster City altimeter setting, increase LPV all Cats visibility to 1 mile.</p>			

AWOS-3PT 118.775	MINNEAPOLIS CENTER 134.0 288.3	UNICOM 123.0 (CTAF)
----------------------------	--	-------------------------------



ELEV 1156	D TDZE 1107
-----------	--------------------



CATEGORY	A	B	C	D
LPV DA		1307-½	200 (200-½)	
LNAV/VNAV DA		1525-1	418 (400-1)	
LNAV MDA	1500-½	393 (400-½)		1500-1 393 (400-1)
CIRCLING	1560-1 404 (500-1)	1620-1 464 (500-1)	1740-1½ 584 (600-1½)	2080-3 924 (1000-3)

063° to RWY 06

MIRL Rwy 12-30 **Ⓛ**
HIRL Rwy 6-24 **Ⓛ**
REIL Rws 12, 24 and 30 **Ⓛ**

NC-3, 09 SEP 2021 to 07 OCT 2021

NC-3, 09 SEP 2021 to 07 OCT 2021