

VORTAC FOD 113.5 Chan 82	APP CRS 120°	Rwy Idg TDZE 1128 Apt Elev 1156
----------------------------------------------	------------------------	-----------------------------------------------------

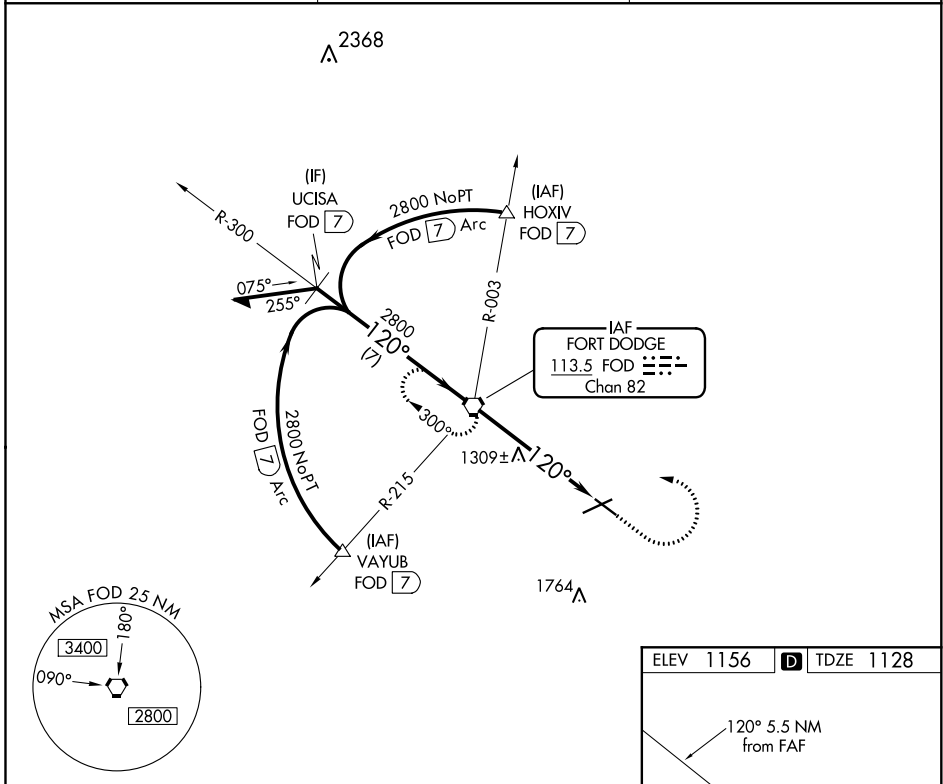
VOR RWY 12

FORT DODGE RGNL (FOD)

⚠ When local altimeter setting not received, use Webster City altimeter setting: increase all MDAs 60 feet and Circling Cat C visibility ¼ SM. Visibility reduction by helicopters NA.

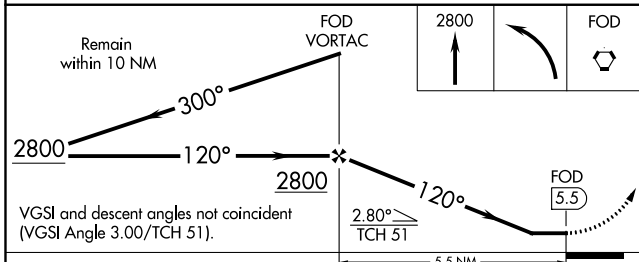
MISSED APPROACH: Climb to 2800 then left turn direct FOD VORTAC and hold.

AWOS-3PT 118,775	MINNEAPOLIS CENTER 134.0 288.3	UNICOM 123.0 (CTAF)
----------------------------	------------------------------------------	-------------------------------

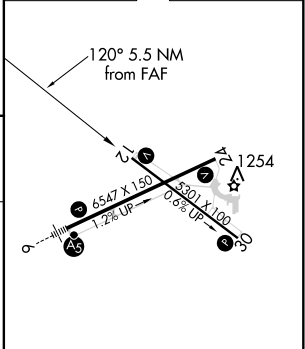


NC-3, 09 SEP 2021 to 07 OCT 2021

NC-3, 09 SEP 2021 to 07 OCT 2021



ELEV 1156	TDZE 1128
-----------	-----------



MIRL Rwy 12-30
REIL Rws 12, 24 and 30
HIRL Rwy 6-24

FAF to MAP 5.5 NM

Knots	60	90	120	150	180
Min:Sec	5:30	3:40	2:45	2:12	1:50

CATEGORY	A	B	C	D
S-12	1560-1	432 (500-1)	1560-1½ 432 (500-1½)	1560-1½ 432 (500-1½)
CIRCLING	1560-1 404 (500-1)	1620-1 464 (500-1)	1740-1½ 584 (600-1½)	2080-3 924 (1000-3)