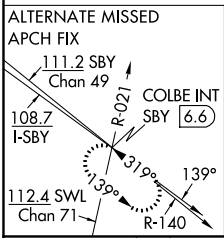
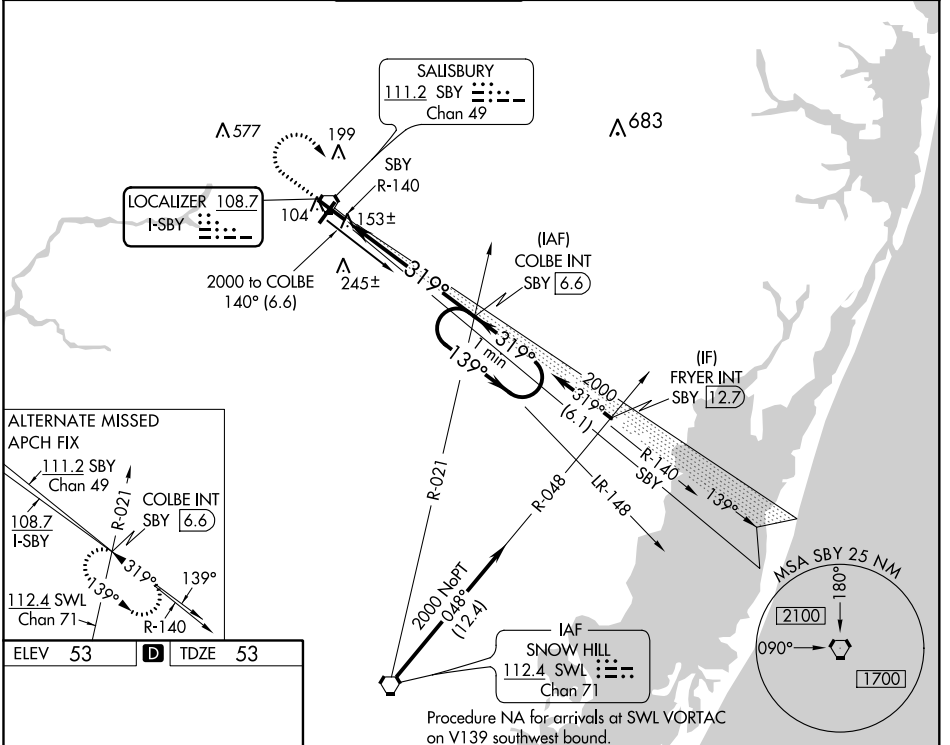


LOC I-SBY 108.7	APP CRS 319°	Rwy Idg TDZE Apt Elev	6400 53 53
---------------------------	------------------------	-----------------------------	---------------------------------------

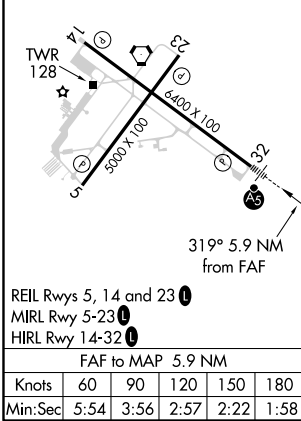
ILS or LOC RWY 32

SALISBURY-OCEAN CITY WICOMICO RGNL (SBY)

<p>▼ When local altimeter setting not received, use Georgetown altimeter setting: increase DA to 305 feet; increase all MDA 60 feet and S-LOC 32 Cat C and Circling Cat D visibility ¼ SM.</p>	<p>MALSR</p>	<p>MISSED APPROACH: Climb to 700 then climbing right turn to 2000 on heading 170° and on SBY VORTAC R-140 to COLBE INT/SBY VORTAC 6.6 DME and hold.</p>			
ASOS 118.325	PATUXENT APP CON★ 127.95 314.0	SALISBURY TOWER★ 119.425 (CTAF)	GND CON 123.775	CLNL DEL★ 123.775	UNICOM 122.95

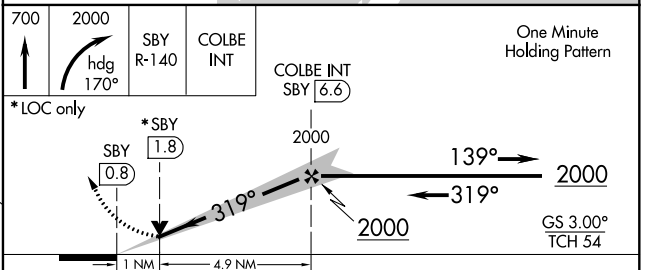


ELEV 53	D	TDZE 53
---------	----------	---------



REIL Rwy 5, 14 and 23
 MIRL Rwy 5-23
 HIRL Rwy 14-32
 FAF to MAP 5.9 NM

Knots	60	90	120	150	180
Min:Sec	5:54	3:56	2:57	2:22	1:58



CATEGORY	A	B	C	D
S-ILS 32	253-½ 200 (200-½)			
S-LOC 32	420-½ 367 (400-½)			420-¾ 367 (400-¾)
CIRCLING	480-1 427 (500-1)	520-1 467 (500-1)	560-1½ 507 (600-1½)	700-2 647 (700-2)

NE-3, 09 SEP 2021 to 07 OCT 2021

NE-3, 09 SEP 2021 to 07 OCT 2021