

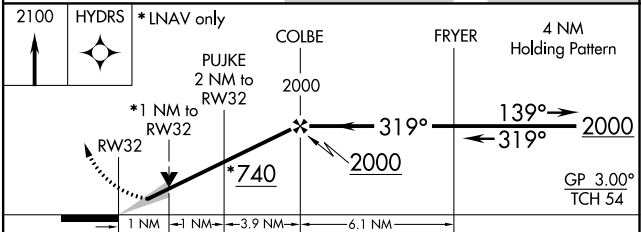
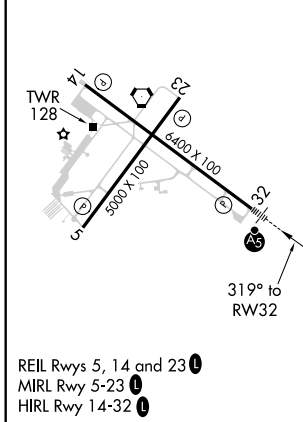
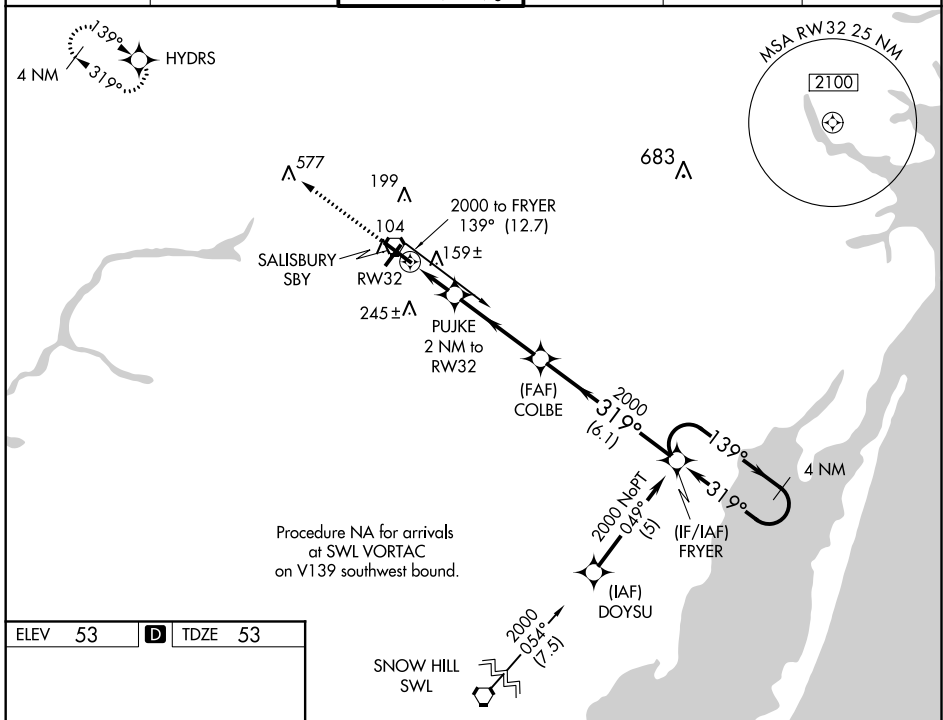
WAAS CH <b>48912</b> <b>W32A</b>	APP CRS <b>319°</b>	Rwy Idg TDZE Apt Elev	<b>6400</b> <b>53</b> <b>53</b>
--	------------------------	-----------------------------	---------------------------------------

# RNAV (GPS) RWY 32

SALISBURY-OCEAN CITY WICOMICO RGNL (SBY)

RNP APCH.	MALSRL	MISSED APPROACH: Climb to 2100 direct HYDRS and hold.
<p>▼ For uncompensated Baro-VNAV systems, LNAV/VNAV NA below -15°C or above 49°C. When local altimeter setting not received use Georgetown altimeter setting: increase LPV DA to 305 feet; increase LNAV/VNAV DA to 510; increase all MDA 60 feet and LNAV Cat C and Circling Cat D visibility ¼ SM. For inoperative MALSRL, increase LNAV Cat D visibility to 1¼ SM. VDP and Baro-VNAV NA when using Georgetown altimeter setting.</p>		

ASOS <b>118.325</b>	PATUXENT APP CON ★ <b>127.95 314.0</b>	SALISBURY TOWER ★ <b>119.425 (CTAF) 0</b>	GND CON <b>123.775</b>	CLNL DEL ★ <b>123.775</b>	UNICOM <b>122.95</b>
------------------------	---	--	---------------------------	------------------------------	-------------------------



CATEGORY	A	B	C	D
LPV DA		253-½	200 (200-½)	
LNAV/VNAV DA		458-1	405 (500-1)	
LNAV MDA		420-½	367 (400-½)	420-1 367 (400-1)
CIRCLING	480-1 427 (500-1)	520-1 467 (500-1)	560-1½ 507 (600-1½)	700-2 647 (700-2)

NE-3, 09 SEP 2021 to 07 OCT 2021

NE-3, 09 SEP 2021 to 07 OCT 2021