

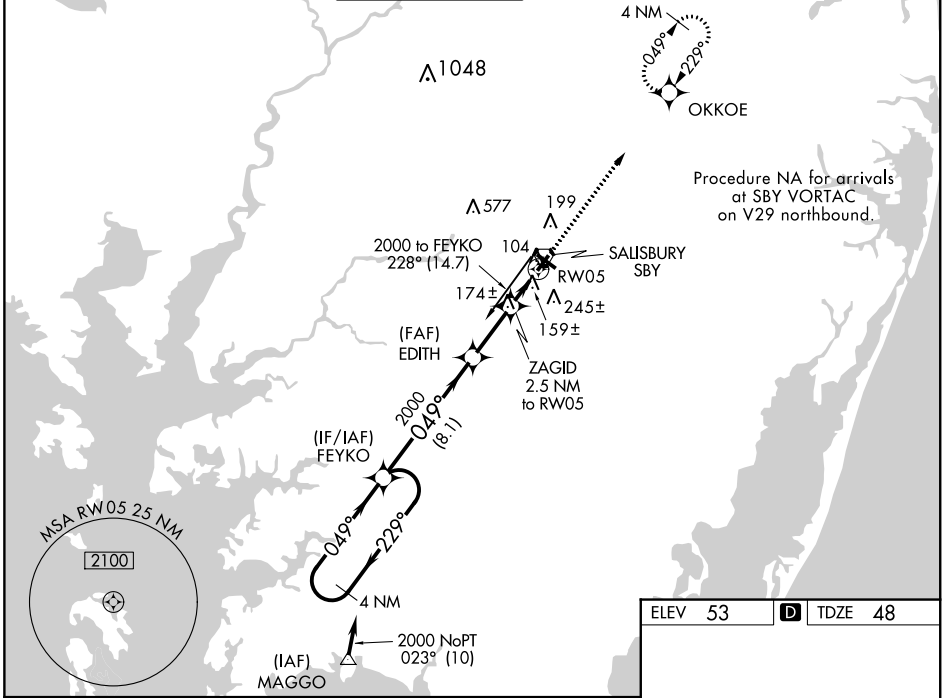
WAAS CH 62820 W05A	APP CRS 049°	Rwy Idg TDZE Apt Elev	5000 48 53
--	------------------------	-----------------------------	---------------------------------------

RNAV (GPS) RWY 5

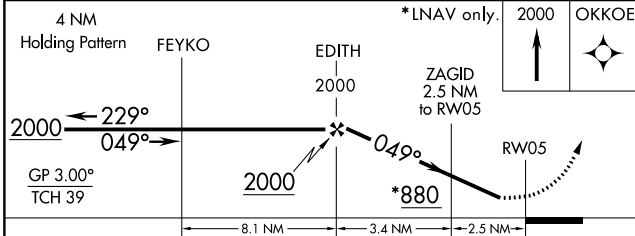
SALISBURY-OCEAN CITY WICOMICO RGNL (SBY)

RNP APCH	<p>Baro-VNAV NA when using Georgetown altimeter setting. For uncompensated Baro-VNAV systems, LNAV/VNAV NA below -15°C or above 49°C. Visibility reduction by helicopters NA. When local altimeter setting not received use Georgetown altimeter setting: increase LPV DA to 394 feet and increase all Cats visibility ¼ SM; increase LNAV/VNAV DA to 512 feet and all Cats visibility ¼ SM; increase all MDA 60 feet and LNAV Cat C/D and Circling Cat D visibility ¼ SM.</p>			
<p>MISSED APPROACH: Climb to 2000 direct OKKOE and hold.</p>				

ASOS 118.325	PATUXENT APP CON ★ 127.95 314.0	SALISBURY TOWER ★ 119.425 (CTAF) 0	GND CON 123.775	CLNL DEL ★ 123.775	UNICOM 122.95
------------------------	---	--	---------------------------	------------------------------	-------------------------



NE-3, 09 SEP 2021 to 07 OCT 2021



ELEV 53	TDZE 48
<p>REIL Rwy 5, 14 and 23 MIRL Rwy 5-23 HIRL Rwy 14-32</p>	

CATEGORY	A	B	C	D
LPV DA	342-1		294 (300-1)	
LNAV/VNAV DA	460-1½		412 (500-1½)	
LNAV MDA	440-1		392 (400-1)	
CIRCLING	480-1	520-1	560-1½	700-2
	427 (500-1)	467 (500-1)	507 (600-1½)	647 (700-2)