

RNAV (GPS) RWY 10

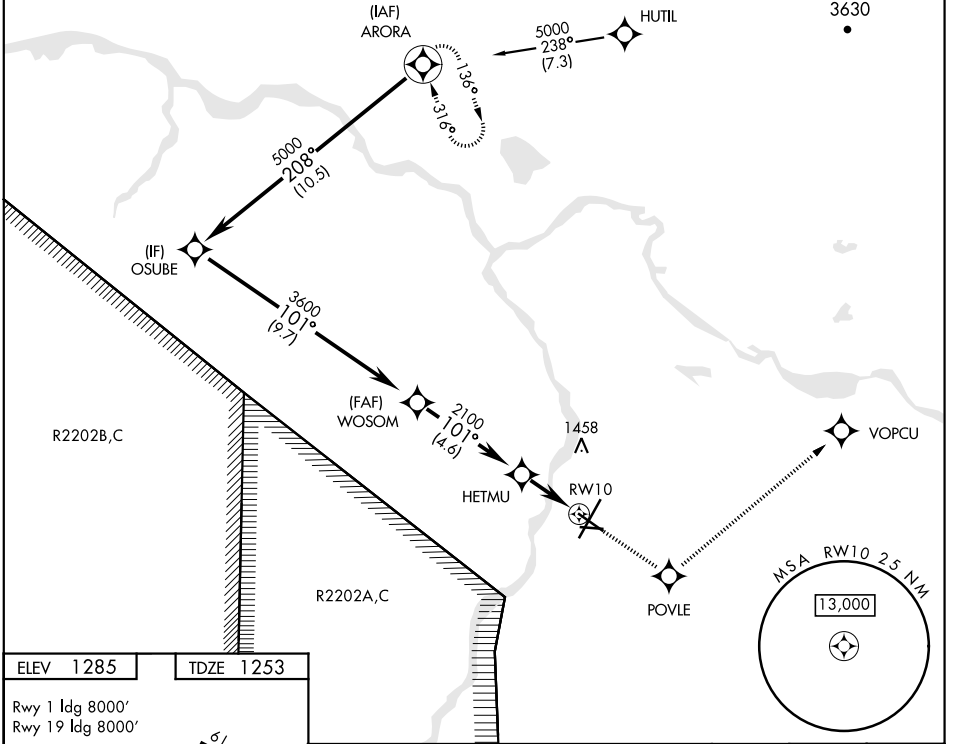
APCH CRS	Rwy ldg	6115
101°	TDZE	1253
	Arpt Elev	1285

AL-1218 [USA]

ALLEN AAF (PABI)

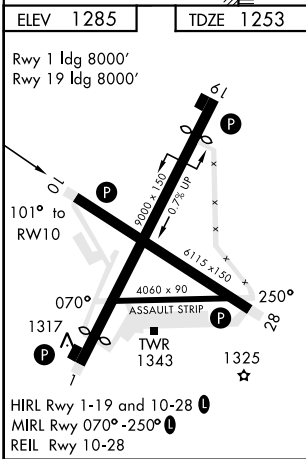
<p>▼ * Circling not authorized East of Rwy 1-19.</p>				<p>MISSED APPROACH: Climb to 5000 direct POVLE, and via 027° track to VOPCU, left turn via 289° track to ARORA and hold.</p>			
ATIS	ASOS	ANCHORAGE CENTER	CTAF	ALLEN TOWER *			GND CON
132.075	135.65	135.3 322.5	122.9	119.8	235.775	40.8 (E) FM	118.225 251.05

DME/DME RNP -0.3 NA



AK, 12 AUG 2021 to 07 OCT 2021

AK, 12 AUG 2021 to 07 OCT 2021



<p>OSUBE</p> <p>5000</p> <p>101°</p> <p>3600</p> <p>3.06° TCH 51</p> <p>WOSOM</p> <p>HETMU</p> <p>2100</p> <p>RW10</p> <p>4.6 NM</p> <p>2.5 NM</p>				<p>VGSI and descent angles not coincident.</p> <p>5000</p> <p>POVLE</p> <p>tr 027°</p>	
CATEGORY	A	B	C	D	
LNNAV MDA	1580-1 327 (300-1)				
CIRCLING *	1720-1 435 (500-1)	1760-1 475 (500-1)	1760-1½ 475 (500-1½)	1860-2 575 (600-2)	

RNAV (GPS) RWY 10