

DELTA JUNCTION/FORT GREELY, ALASKA

VOR/DME or TACAN RWY 19

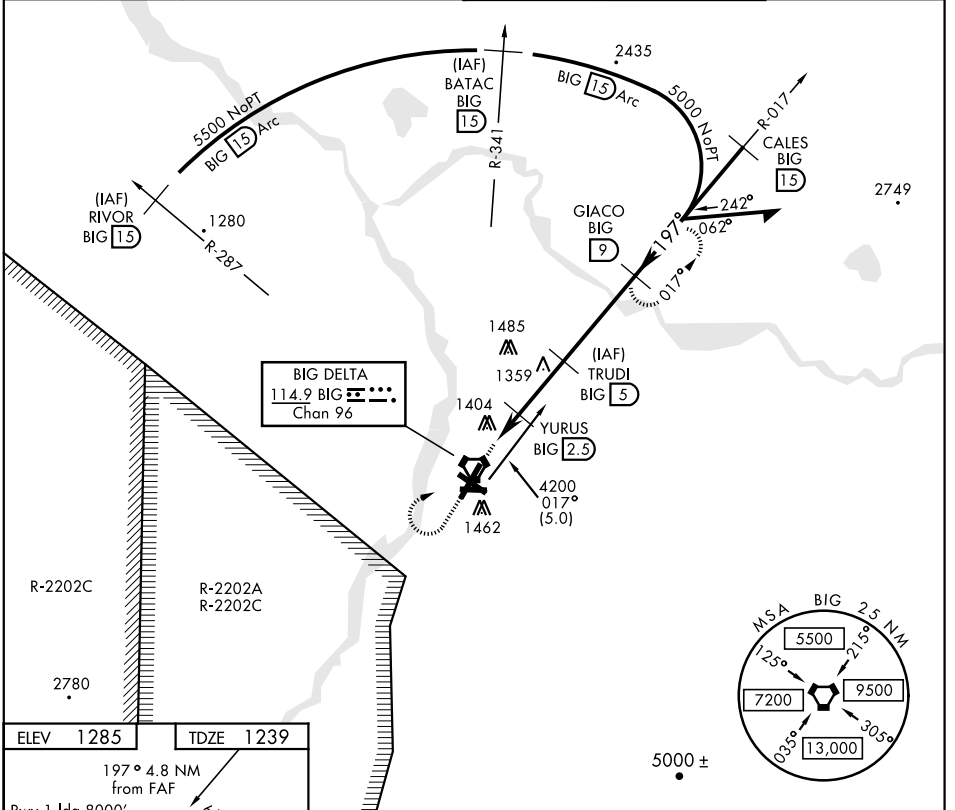
VORTAC BIG <b>114.9</b> Chan <b>96</b>	APCH CRS <b>197°</b>	Rwy ldg TDZE Arprt Elev <b>8000</b> <b>1239</b> <b>1285</b>
--	-------------------------	--

AL-1218 [USA]

ALLEN AAF (PABI)

<p>⚠ *Circling not authorized East of Rwy 1-19.</p>		<p>MISSED APPROACH: Climb to 2100, then climbing right turn to 4000 via BIG R-017 to GIACO/9 DME and hold.</p>	
---	--	--	--

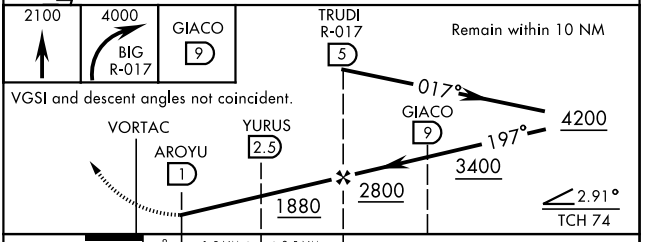
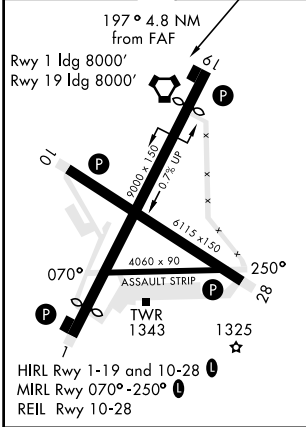
ATIS <b>132.075</b>	ASOS <b>135.65</b>	ANCHORAGE CENTER <b>135.3 322.5</b>	CTAF <b>122.9</b>	ALLEN TOWER ★ <b>119.8 235.775 40.8 (E) FM</b>	GND CON <b>118.225 251.05</b>
------------------------	-----------------------	--	----------------------	---	----------------------------------



AK, 12 AUG 2021 to 07 OCT 2021

AK, 12 AUG 2021 to 07 OCT 2021

ELEV	1285	TDZE	1239
------	------	------	------



CATEGORY	A	B	C	D
S-19	1660-1 421 (400-1)		1660-1¼ 421 (400-1¼)	
CIRCLING *	1720-1 435 (500-1)	1760-1 475 (500-1)	1760-1½ 475 (500-1½)	1860-2 575 (600-2)

DELTA JUNCTION/FORT GREELY, ALASKA

64°00'N-145°43'W

ALLEN AAF (PABI)

VOR/DME or TACAN RWY 19