

NDB CUN <b>257</b>	APCH CRS <b>252°</b>	Rwy Idg TDZE Arpt Elev	<b>N/A</b> <b>N/A</b> <b>449</b>
-----------------------	-------------------------	---------------------------	--

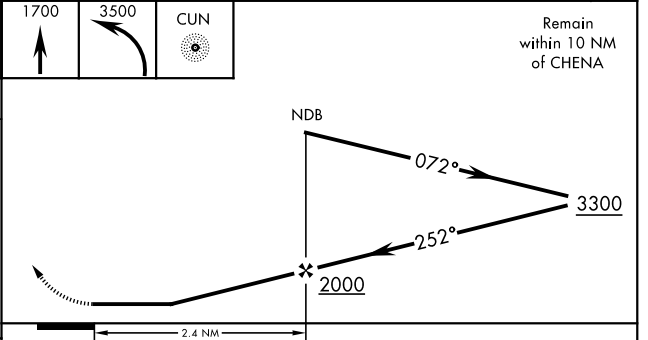
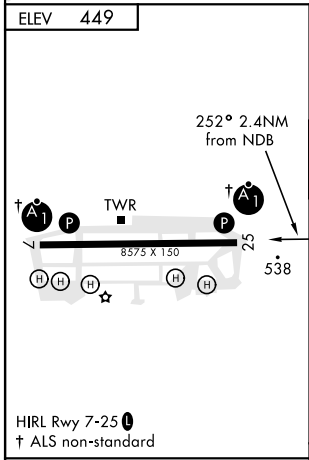
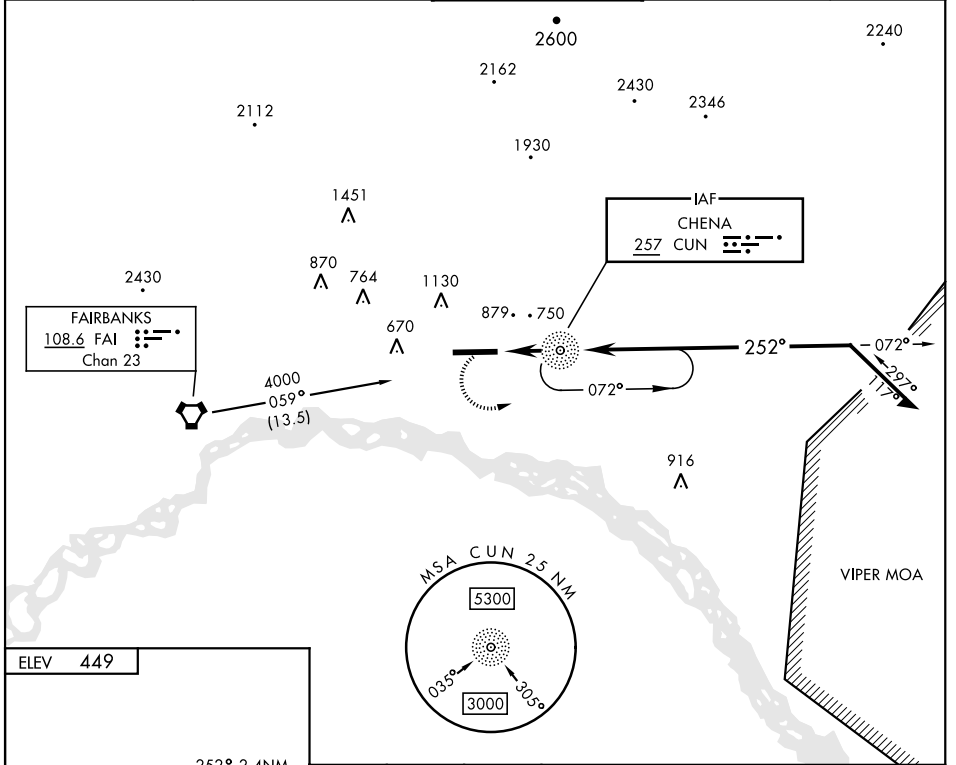
AL-1219 [USA]

LADD AAF (PAFB)

**⚠** \* Circling not authorized N of Rwy 7-25.

**MISSED APPROACH:** Climb to 1700 then climbing left turn to 3500 direct CUN NDB and hold, continue climb-in-hold to 3500.

ATIS <b>134.25</b>	FAIRBANKS APP CON <b>127.1 251.1</b> 360° - 179° <b>125.35 363.2</b> 180° - 359°	TOWER ★ <b>125.0</b> (CTAF) <b>0 284.6</b>	GND CON <b>121.7 263.15</b>	ASR/PAR
-----------------------	--	---	--------------------------------	---------



FAF to MAP 2.4 NM					CATEGORY						
Knots	60	90	120	150	180	A	B	C	D		
Min:Sec	2:24	1:36	1:12	0:58	0:48	1380-1¼	931 (1000-1¼)	1380-2¾	931 (1000-2¾)	1380-3	931 (1000-3)
						<b>CIRCLING*</b>					

AK, 12 AUG 2021 to 07 OCT 2021

AK, 12 AUG 2021 to 07 OCT 2021