

(GLEEN7.GLEEN) 21224

GALENA SEVEN DEPARTURE

AL-1234 (FAA)

FAIRBANKS INTL (FAI) (PAFA)
FAIRBANKS, ALASKA

AK, 12 AUG 2021 to 07 OCT 2021

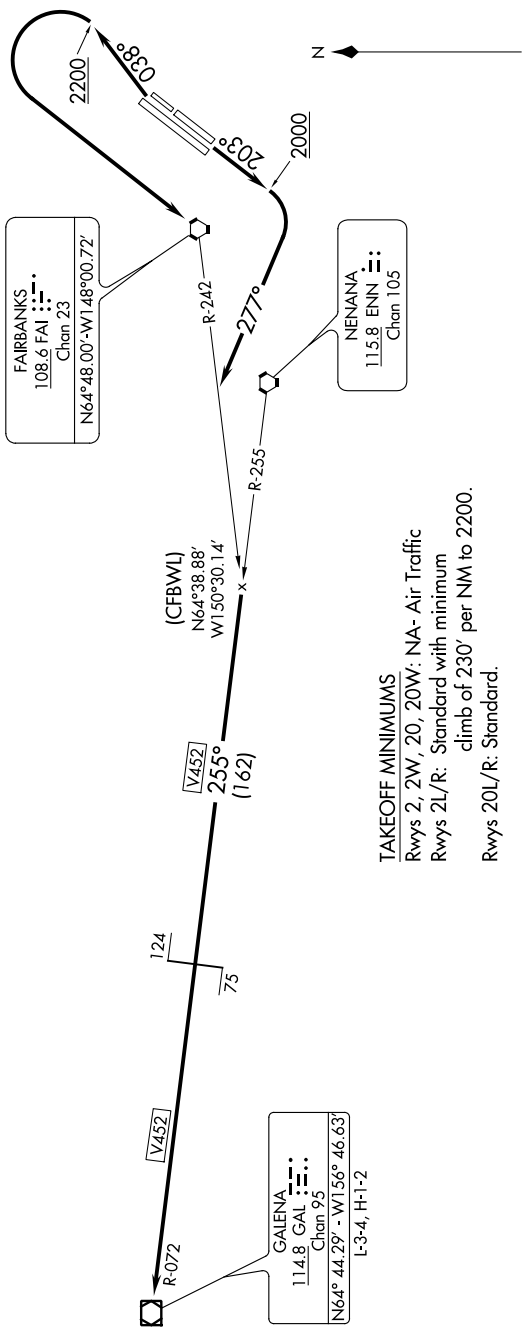
DEPARTURE ROUTE DESCRIPTION

TAKEOFF RUNWAYS 2L/R: Climb heading 038° to 2200, then left turn direct FAI VORTAC, thence . . .

TAKEOFF RUNWAYS 20L/R: Climb heading 203° to 2000, then right turn heading 277°, thence . . .

. . . intercept FAI R-242 to ENN R-255, then on ENN R-255 and GAL R-072 to GAL VOR/DME, then continue climb on assigned route and altitude.

ATIS 124.4
CLNC DEL 127.6
GND CON 121.9
FAIRBANKS TOWER
118.3 257.8
FAIRBANKS DEP CON
125.35 363.2



FAIRBANKS
108.6 FAI
Chan 23
N64°48'00"-W148°00'72"

NENANA
115.8 ENN
Chan 105

(CFBWL)
N64°38'88"
W150°30'14"

V452
255°
(162)

GALENA
114.8 GAL
Chan 95
N64°44'29"-W156°46'63"
L-3-4, H-1-2

TAKEOFF MINIMUMS
Rwys 2, 2W, 20, 20W: NA- Air Traffic
Rwys 2L/R: Standard with minimum
climb of 230' per NM to 2200.
Rwys 20L/R: Standard.

NOTE: DME Required

NOTE: Chart not to scale.

GALENA SEVEN DEPARTURE

(GLEEN7.GLEEN) 12AUG21

FAIRBANKS, ALASKA
FAIRBANKS INTL (FAI) (PAFA)

AK, 12 AUG 2021 to 07 OCT 2021