

AK 12 AUG 2021 to 07 OCT 2021

ARRIVAL ROUTE DESCRIPTION

From RDFLG on track 291° to HRDNG, then on track 288° to cross RNDRR at or above 7000.

LANDING RUNWAY 2L: From RNDRR on track 260° to cross KRIIS at or above 4500 and at or below 210K, then on track 234° to cross BAYKR at or above 3700, then on track 203°.

Expect RADAR vectors to final approach course.

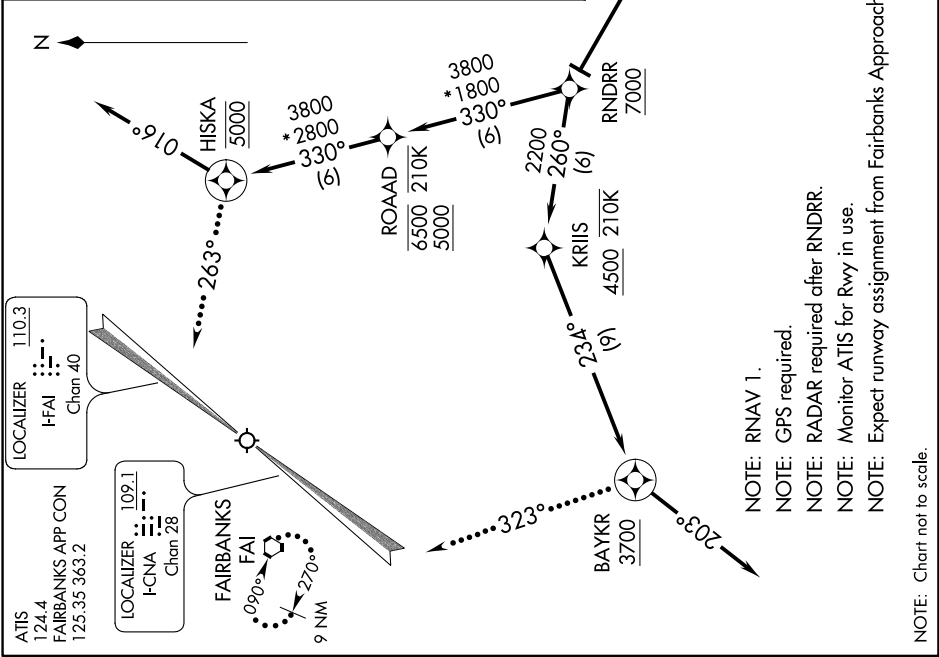
LANDING RUNWAY 20R: From RNDRR on track 330° to cross ROAAD between 5000 and 6500 and at or below 210K, then on track 330° to cross HISKA at 5000, then on track 016°.

Expect RADAR vectors to final approach course.

LOST COMMUNICATIONS

RUNWAY 2L: After BAYKR fly heading 323°, maintain 3700 intercept and execute the ILS or LOC RWY 2L approach. If unable, proceed direct to FAI VORTAC and hold, maintain 5000.

RUNWAY 20R: After HISKA, fly heading 263°, maintain 4200, intercept and execute the ILS or LOC RWY 20R approach. If unable, proceed direct to FAI VORTAC and hold, maintain 5000.



- NOTE: RNAV 1.
- NOTE: GPS required.
- NOTE: RADAR required after RNDRR.
- NOTE: Monitor ATIS for Rwy in use.
- NOTE: Expect runway assignment from Fairbanks Approach Control on initial contact.

NOTE: Chart not to scale.

AK 12 AUG 2021 to 07 OCT 2021