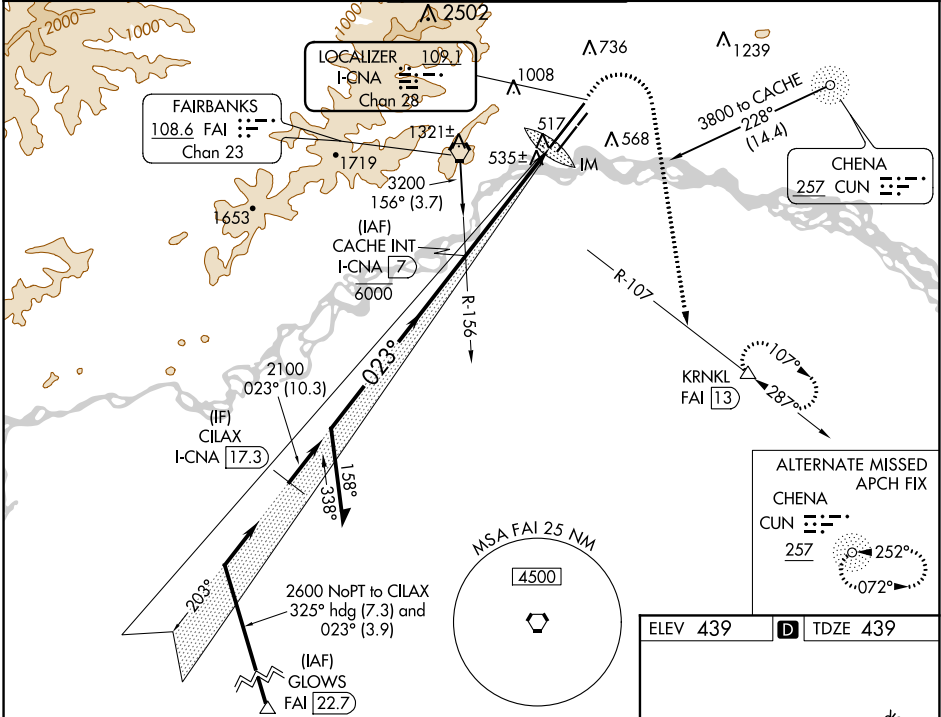


| | | |
|----------------|----------|--------------|
| LOC/DME I-CNA | Rwy Idg | 11050 |
| 109.1 | TDZE | 439 |
| Chan 28 | Apt Elev | 439 |

ILS RWY 2L (CAT II & III)
FAIRBANKS INTL (FAI) (PAFA)

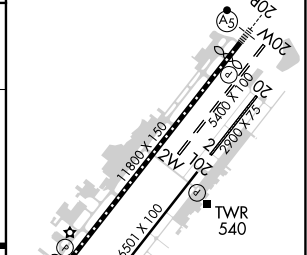
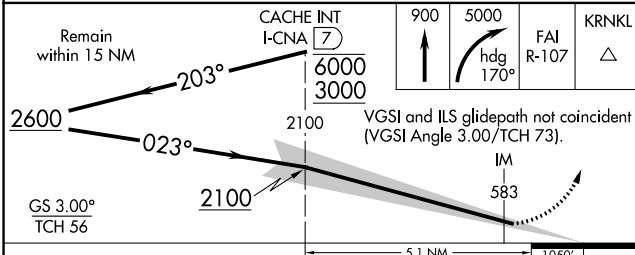
| | | |
|---|--------|--|
| DME Required. | ALSF-2 | MISSED APPROACH: Climb to 900 then climbing right turn to 5000 on heading 170° and FAI VORTAC R-107 to KRNL/FAI 13 DME and hold, continue climb-in-hold to 5000. |
| <p>▼ CAT II: RVR 1000 authorized with specific OPSPEC, MSPEC, or LOA approval and use of autoland or HUD to touchdown.</p> <p>▲ -32°C</p> | | |

| ATIS | FAIRBANKS APP CON | FAIRBANKS TOWER | GND CON | CLNC DEL |
|--------------|---------------------|--------------------|--------------|--------------|
| 124.4 | 125.35 363.2 | 118.3 257.8 | 121.9 | 127.6 |



ALTERNATE MISSED APCH FIX
 CHENA
 CUN 257

ELEV 439 TDZE 439



| CATEGORY | A | B | C | D |
|----------|-----------------------------|---|---|---|
| S-ILS 2L | CAT II RA 104/12 100 DA 539 | | | |
| S-ILS 2L | CAT III RVR 06 | | | |

CATEGORY II & III ILS - SPECIAL AIRCREW & AIRCRAFT CERTIFICATION REQUIRED

REIL Rwy 20L
 TDZ/CL Rwy 2L
 MIRL Rwy 2R-20L
 HIRL Rwy 2L-20R

AK, 12 AUG 2021 to 07 OCT 2021

AK, 12 AUG 2021 to 07 OCT 2021