

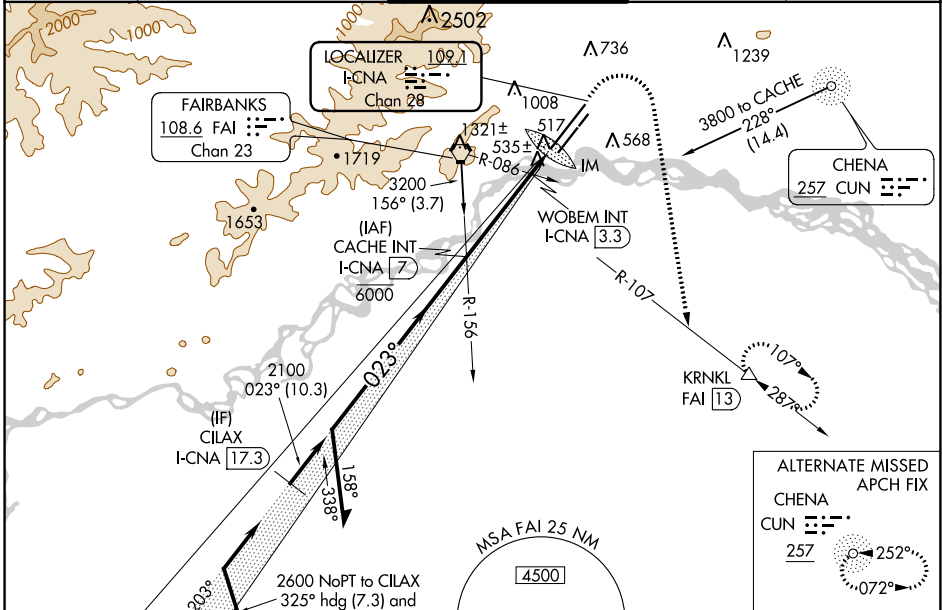
LOC/DME I-CNA <b>109.1</b> Chan 28	APP CRS <b>023°</b>	Rwy Idg TDZE <b>439</b> Apt Elev <b>439</b>	<b>11050</b>
--	------------------------	---	--------------

# ILS or LOC RWY 2L

FAIRBANKS INTL (FAI) (PAFA)

DME Required.	ALSIF-2 	MISSED APPROACH: Climb to 900 then climbing right turn to 5000 on heading 170° and FAI VORTAC R-107 to KRNL/FAI 13 DME and hold, continue climb-in-hold to 5000.
 Circling NA west of Rwy 2L-20R. Circling NA to Rwys 2W and 20W. For inop ALS, increase S-ILS 2L Cat E visibility to RVR 4000 and S-LOC 2L Cat C/D/E visibility to RVR 5500. -32°C		

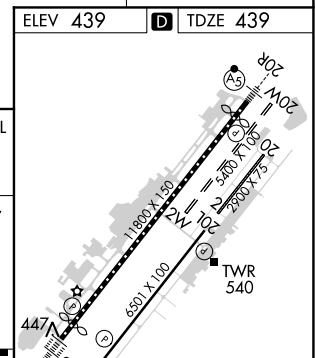
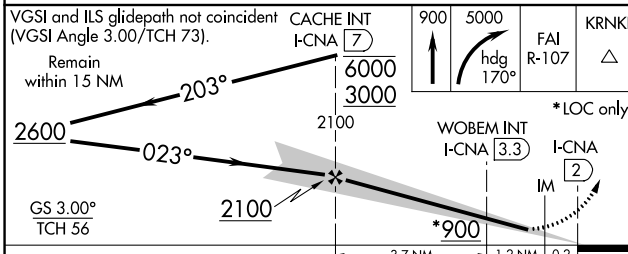
ATIS <b>124.4</b>	FAIRBANKS APP CON <b>125.35 363.2</b>	FAIRBANKS TOWER <b>118.3 257.8</b>	GND CON <b>121.9</b>	CLNC DEL <b>127.6</b>
----------------------	--	---------------------------------------	-------------------------	--------------------------



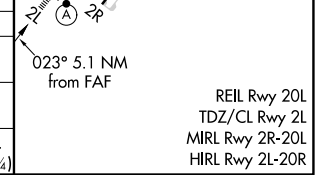
ALTERNATE MISSED APCH FIX  
CHENA  
CUN   
257

252°  
072°

ELEV 439	<b>D</b> TDZE 439
----------	-------------------



CATEGORY	A	B	C	D	E
S-ILS 2L	639/18 200 (200-½)				
S-LOC 2L	800/24	361 (400-½)	800/35 361 (400-¾)		
CIRCLING	880-1 441 (500-1)	900-1 461 (500-1)	900-1½ 461 (500-1½)	1020-2 581 (600-2)	1060-2¼ 621 (700-2¼)



AK, 12 AUG 2021 to 07 OCT 2021

AK, 12 AUG 2021 to 07 OCT 2021

REIL Rwy 20L  
TDZ/CL Rwy 2L  
MIRL Rwy 2R-20L  
HIRL Rwy 2L-20R