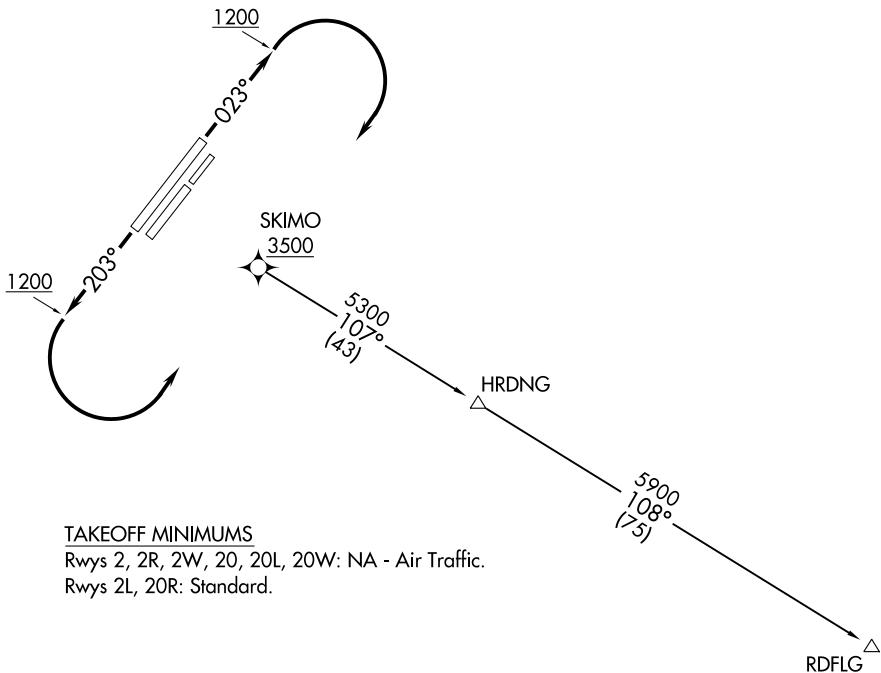


**TOP ALTITUDE:
10000**

ATIS 124.4
CLNC DEL 127.6
GND CON 121.9
FAIRBANKS TOWER 118.3 257.8
FAIRBANKS DEP CON 125.35 363.2



TAKEOFF MINIMUMS

Rwys 2, 2R, 2W, 20, 20L, 20W: NA - Air Traffic.
Rwys 2L, 20R: Standard.

NOTE: GPS Required.
NOTE: RNAV-1.

NOTE: Chart not to scale.



DEPARTURE ROUTE DESCRIPTION

TAKEOFF RUNWAY 2L: Climb heading 023° to 1200, then climbing right turn direct SKIMO, cross SKIMO at or above 3500, thence. . . .

TAKEOFF RUNWAY 20R: Climb heading 203° to 1200, then climbing left turn direct SKIMO, cross SKIMO at or above 3500, thence. . . .

. . . .on RDLFG transition, climb and maintain 10000, expect 17000 ten minutes after departure.

RDLFG TRANSITION (RDFLG4.RDFLG)