

RNAV (RNP) Z RWY 20R

FAIRBANKS INTL (FAI) (PAFA)

APP CRS	Rwy ldg 11050
203°	TDZE 439
	Apt Elev 439

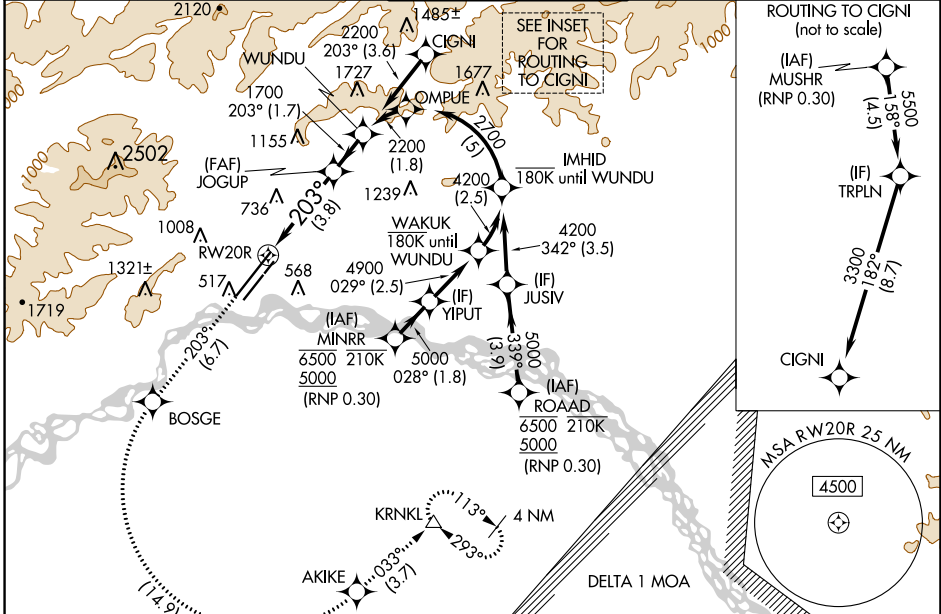
RNP AR APCH - GPS.

-32°C For uncompensated Baro-VNAV systems, procedure NA below -18°C or above 54°C. For inop ALS, increase RNP 0.10 all Cats visibility to RVR 5000.

MALSR

MISSED APPROACH: Climb to 4000 on track 203° to BOSGE, left turn to AKIKE, then track 033° to KRNLK and hold.

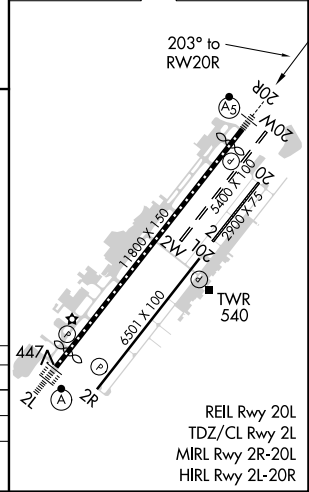
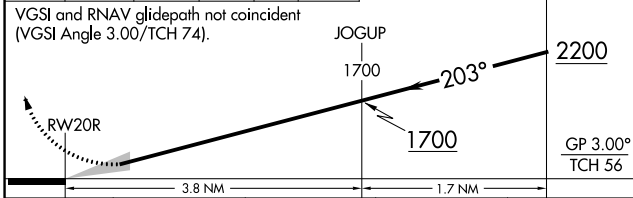
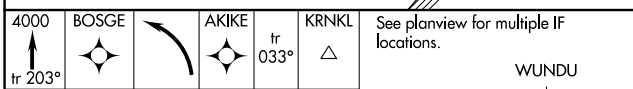
ATIS	FAIRBANKS APP CON	FAIRBANKS TOWER	GND CON	CLNC DEL
124.4	125.35 363.2	118.3 257.8	121.9	127.6



AK, 12 AUG 2021 to 07 OCT 2021

AK, 12 AUG 2021 to 07 OCT 2021

ELEV	439	TDZE	439
------	-----	------	-----



CATEGORY	A	B	C	D
RNP 0.10 DA		763/30	324 (400-5/8)	
RNP 0.30 DA		922/60	483 (500-1 1/4)	

AUTHORIZATION REQUIRED

REIL Rwy 20L
TDZ/CL Rwy 2L
MIRL Rwy 2R-20L
HIRL Rwy 2L-20R