

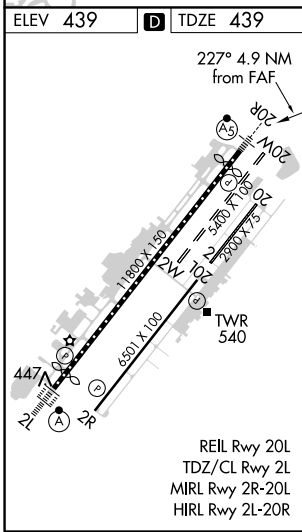
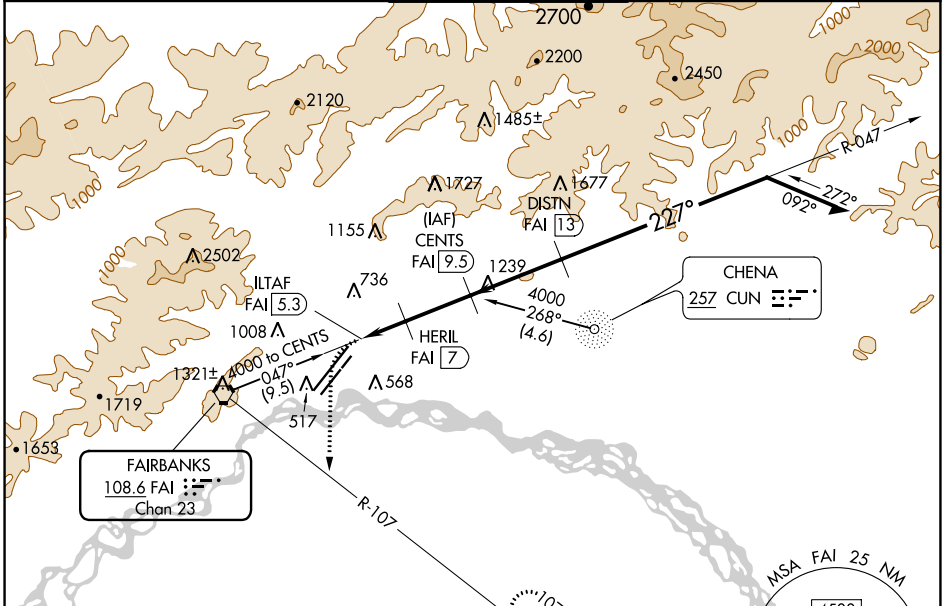
VORTAC FAI 108.6 Chan 23	APP CRS 227°	Rwy Idg 11050 TDZE 439 Apt Elev 439
---------------------------------------	------------------------	--

VOR or TACAN RWY 20R

FAIRBANKS INTL (FAI) (PAFA)

DME Required. DME required for procedure entry.		MALSR	MISSED APPROACH: Climbing left turn to 4000 on heading 160° and FAI VORTAC R-107 to KRNL/FAI 13 DME and hold, continue climb-in-hold to 4000.
<p>⚠ Circling NA west of Rwy 2L-20R. Inop table does not apply.</p> <p>⚠ Circling NA to Rwy 2W and 20W. Rwy 20 helicopter visibility reduction below RVR 4000 NA.</p> <p>❄ -32°C</p>			

ATIS 124.4	FAIRBANKS APP CON 125.35 363.2	FAIRBANKS TOWER 118.3 257.8	GND CON 121.9	CLNC DEL 127.6
----------------------	--	---------------------------------------	-------------------------	--------------------------



4000	FAI R-107	KRNL	CENTS FAI 9.5	VGSI and descent angles not coincident (VGSI Angle 3.00/TCH 74).	
hdg 160°				047°	Remain within 15 NM
	ILTAF FAI 5.3	HERIL FAI 7	DISTN FAI 13	227°	3300
				3.26° TCH 74	4000
					2200
					1300
	0.7	0.7	1 NM	2.5 NM	3.5 NM
CATEGORY	A	B	C	D	E
S-20R	940/55	501 (600-1)	940-1 ³ / ₈	501 (600-1 ³ / ₈)	
<input checked="" type="checkbox"/> CIRCLING	940-1	501 (600-1)	940-1 ¹ / ₂	1020-2	1100-2 ¹ / ₄
			501 (600-1 ¹ / ₂)	581 (600-2)	661 (700-2 ¹ / ₄)

VOR or TACAN RWY 20R

AK, 12 AUG 2021 to 07 OCT 2021

AK, 12 AUG 2021 to 07 OCT 2021