

APP CRS	Rwy Idg	<b>4800</b>
<b>175°</b>	TDZE	<b>183</b>
	Apt Elev	<b>192</b>

# RNAV (GPS) RWY 18

ILIAMNA (ILI) (PAIL)

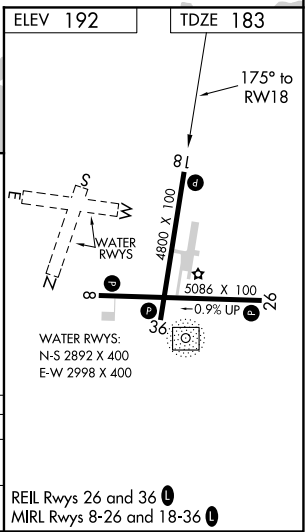
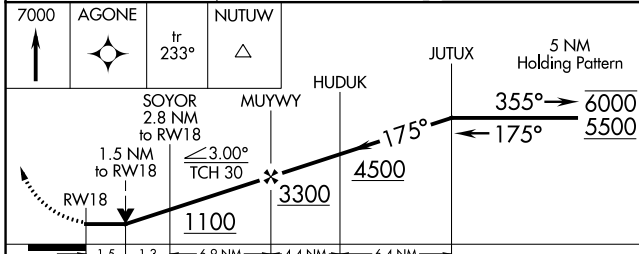
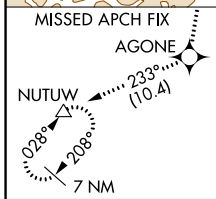
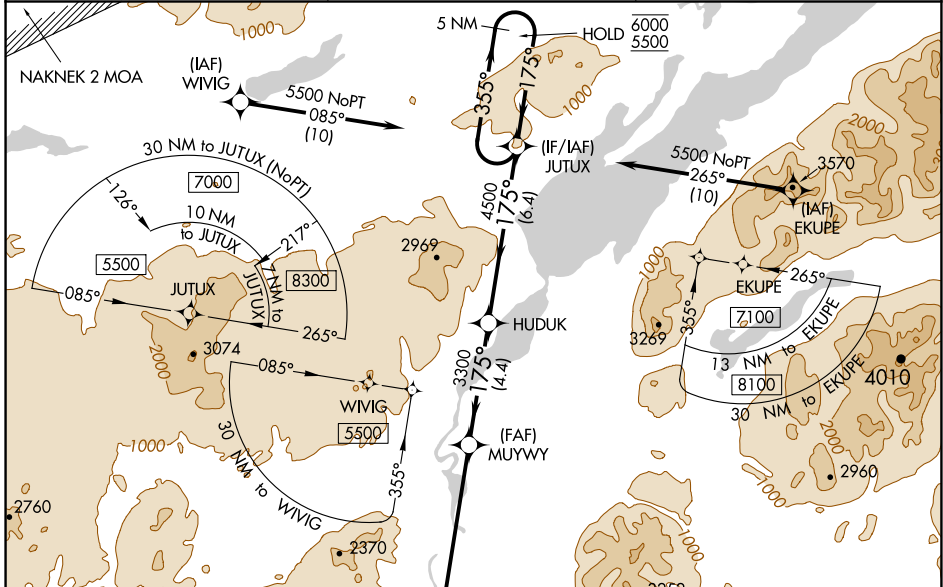
RNP APCH.

Rwy 18 helicopter visibility reduction below 3/4 SM NA.

-29°C

MISSED APPROACH: Climb to 7000 direct AGONE and on track 233° to NUTUW and hold, continue climb-in-hold to 7000.

AFIS <b>134.95</b>	ANCHORAGE CENTER <b>118.8</b>	ILIAMNA RADIO <b>123.6 (CTAF) 0</b>
-----------------------	----------------------------------	--



CATEGORY	A	B	C	D
LNVA MDA	700-1 517 (600-1)		700-1 3/8 517 (600-1 3/8)	
CIRCLING	740-1 548 (600-1)		800-1 3/4 608 (700-1 3/4)	1700-3 1508 (1600-3)

AK, 12 AUG 2021 to 07 OCT 2021

AK, 12 AUG 2021 to 07 OCT 2021