

WAAS CH 82110 W36A	APP CRS 355°	Rwy Idg 4800 TDZE 179 Apt Elev 192
--	------------------------	---

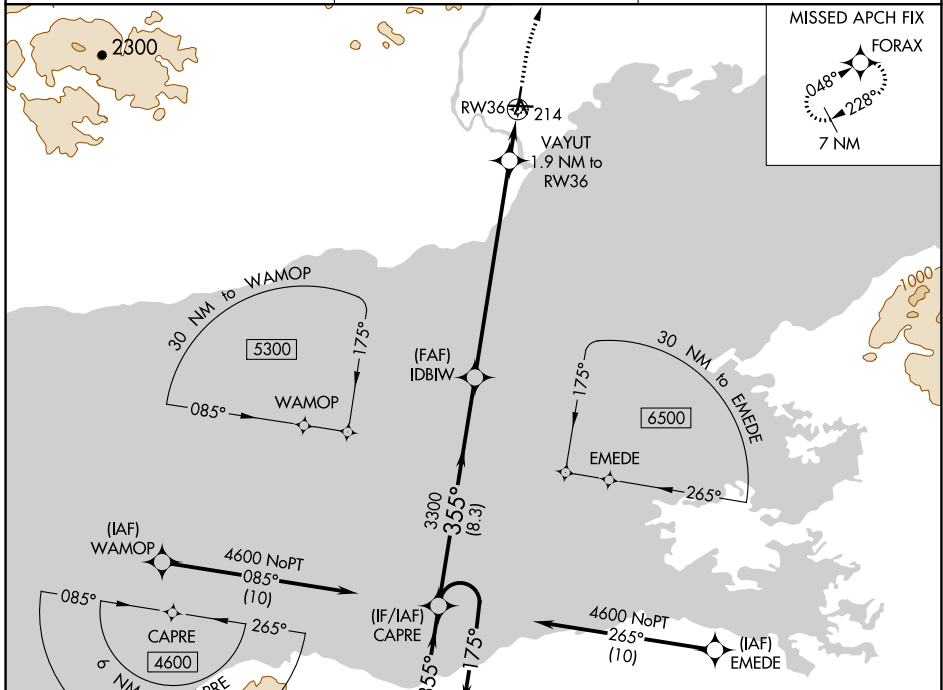
RNAV (GPS) RWY 36

ILIAMNA (ILI) (PAIL)

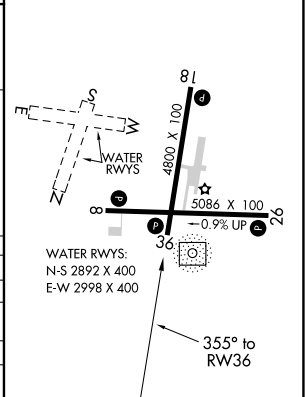
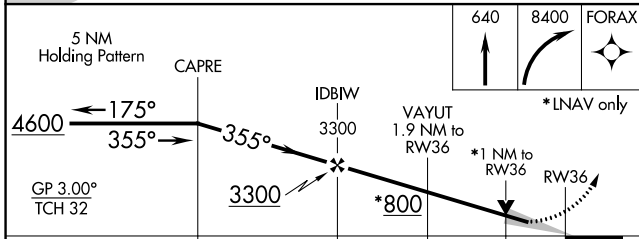
⚠ For uncompensated Baro-VNAV systems, procedure NA below -21°C (-5°F) or above 54°C (130°F). When local altimeter setting not received, procedure NA. DME/DME RNP-0.3 NA.

⚠ MISSED APPROACH: Climb to 640 then climbing right turn to 8400 direct FORAX and hold, continue climb-in-hold to 8400.

AFIS 134.95	ANCHORAGE CENTER 118.8	ILIAMNA RADIO 123.6 (CTAF) Ⓛ
-----------------------	----------------------------------	---



ELEV 192	TDZE 179
REIL Rwy 26 and 36 Ⓛ	MIRL Rwy 8-26 and 18-36 Ⓛ



CATEGORY	A	B	C	D
LPV DA		429-1	250 (300-1)	
LNAV/VNAV DA		462-1	283 (300-1)	
LNAV MDA		540-1	361 (400-1)	
Ⓛ CIRCLING	740-1	548 (600-1)	800-1 ³ / ₄ 608 (700-1 ³ / ₄)	1700-3 1508 (1600-3)

AK, 12 AUG 2021 to 07 OCT 2021

AK, 12 AUG 2021 to 07 OCT 2021