

RNAV (GPS) RWY 8

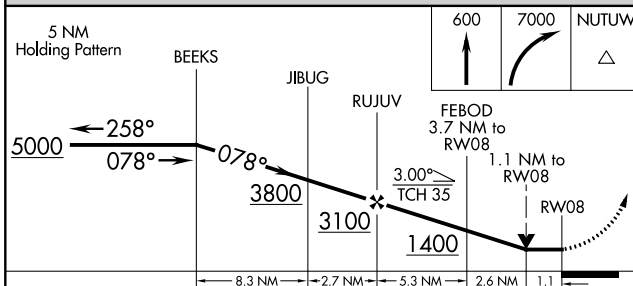
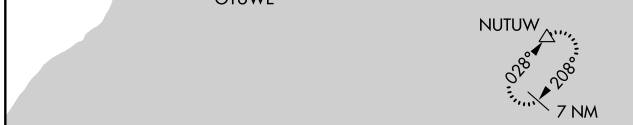
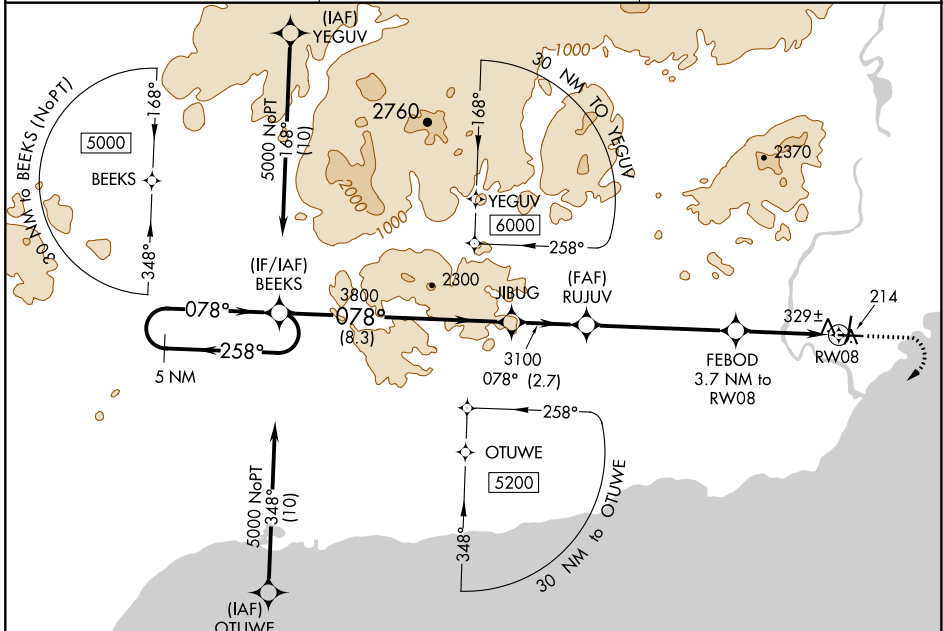
ILIAMNA (ILI) (PAIL)

APP CRS 078°	Rwy Idg 5086
	TDZE 192
	Apt Elev 192

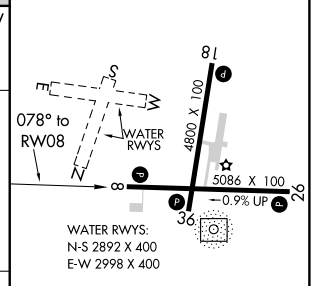
When local altimeter setting not received, procedure NA.
 Rwy 8 helicopter visibility reduction below 3/4 SM NA.
 DME/DME RNP- 0.3 NA.

MISSED APPROACH: Climb to 600, then climbing right turn to 7000 direct NUTUW and hold, continue climb-in-hold 7000.

AFIS 134.95	ANCHORAGE CENTER 118.8	ILIAMNA RADIO 123.6 (CTAF)
-----------------------	----------------------------------	--------------------------------------



ELEV 192	TDZE 192
----------	----------



CATEGORY	A	B	C	D
LNVA MDA	580-1	388 (400-1)	580-1 1/8	388 (400-1 1/8)
CIRCLING	740-1	548 (600-1)	800-1 3/4 608 (700-1 3/4)	1700-3 1508 (1600-3)

REIL Rwy 26 and 36
 MIRL Rwy 8-26 and 18-36

AK, 12 AUG 2021 to 07 OCT 2021

AK, 12 AUG 2021 to 07 OCT 2021